



12/143-145 Blaxcell Street, Granville

HUGE 553SQM TOWNHOUSE — Walk to Station

Privately positioned at the very rear of a well-maintained complex, this unique townhouse offers an impressive 553sqm total land size, delivering space, privacy and flexibility rarely found in townhouse living. With expansive interiors and an oversized backyard, this home is ideal for big families or investment opportunity.

Features

- 3 bedrooms, all with built-in wardrobes
- Main bedroom with walk-in wardrobe and private ensuite
- 3 bathrooms in total, main bathroom fully tiled with separate bath and shower
- Internal laundry with additional bathroom
- Gas cooking kitchen, dishwasher, and ample storage space.
- Massive open-plan living and dining areas filled with abundant natural light perfect for family living and entertaining.
- Secure double lock-up garage
- Huge private backyard with undercover deck ideal for entertaining
- Garden shed for additional storage

Location Highlights

- 20 mins walk to Granville Train Station

All information contained therein is gathered from relevant third parties sources. We cannot guarantee or give any warranty about the information provided. Interested parties must rely solely on their own enquiries.

3 3 2

FOR SALE
\$1,095,000

AGENTS

Soon Tee
0420 966 377
Soon.Tee@ljhooker.com.au

Mya Harfouche
0410 224 207
mya.harfouche@ljhooker.com.au

AGENCY

LJ Hooker Parramatta | Granville |
Guildford | Merrylands
(02) 9637 8555

LJ Hooker

- Near local schools, parks, shops and cafes
- Convenient access to Woodville Road and major arterial routes
- Easy access to Parramatta and Sydney CBD

- ***Outgoings****

Strata: Approx. \$1244.95 pq

Water: Approx. \$210 pq

Council: Approx. \$390 pq

Total Size: 553sqm approx.

Living Area: 158sqm Approx.

Contact the team for more information or inspection.

MORE DETAILS

Property ID	24G0F9E
Property Type	Townhouse
House Size	194 m2
Land Area	553 m2

Soon Tee 0420 966 377

Area Specialist | Soon.Tee@ljhooker.com.au

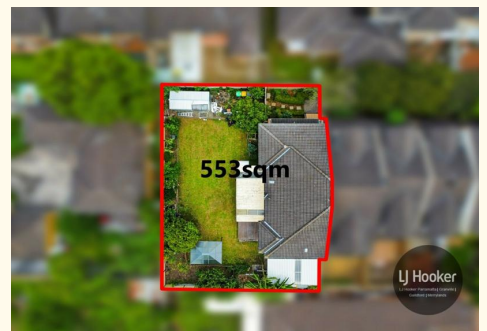
Mya Harfouche 0410 224 207

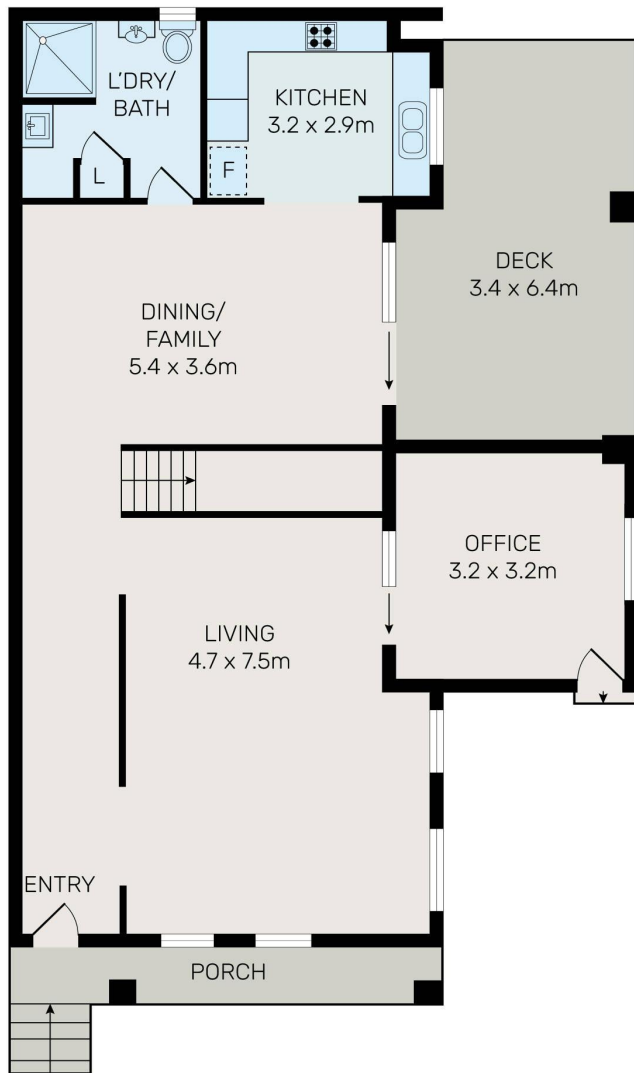
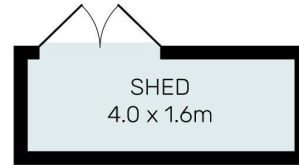
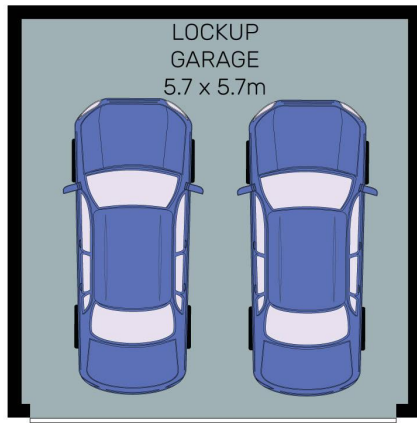
Sales Associate to Soon Tee | mya.harfouche@ljhooker.com.au

LJ Hooker Parramatta | Granville | Guildford | Merrylands (02) 9637 8555

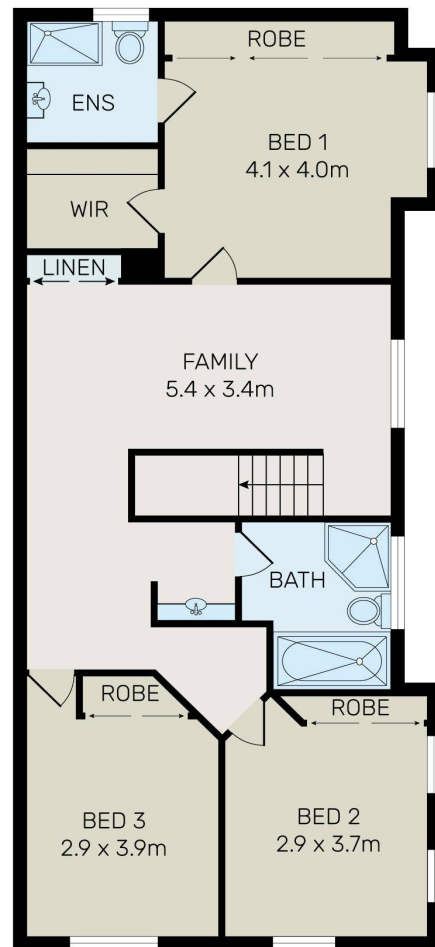
42 South Street, GRANVILLE NSW 2142

granville.ljhooker.com.au | granville@ljhooker.com.au





GROUND FLOOR



FIRST FLOOR



All information contained herein is gathered from all sources we believe to be reliable. However we cannot guarantee its accuracy and interested parties should rely on their own enquiries.



12/143-145 Blaxcell Street, Granville

All information contained therein is gathered from relevant third parties sources. We cannot guarantee or give any warranty about the information provided. Interested parties must rely solely on their own enquiries.

