



8 Erie Street, Granville

Entire Block of 5 Townhouses

Set on 926.7sqm of land in a convenient location, this is a rare opportunity to purchase an entire block of 5 townhouses, 4x 3 bedroom and 1x 4 bedroom. A great opportunity to secure an income-producing asset. All with en-suits, basement carpark and court yards. Close to schools, shops and public transport. Currently returning \$170,040pa with scope to further increase.

- Entire block of 4x 3 bedroom townhouse and 1x 4 bedroom townhouse
- Secure investment with strong rental income potential
- Basement carpark
- Close to shops, transport, schools, and local amenities

Location

- 3km to Guildford Train Station
- 3.4km to Granville Train Station
- 4km to Auburn Train Station
- 4.8km to Merrylands Train Station
- 5.5km to Parramatta Train Station

Contact the team for more information or to arrange an inspection.

16 🚗 9 🚲 10 🚗

FOR SALE

Contact agent

AGENTS

Soon Tee
0420 966 377
Soon.Tee@ljhooker.com.au

Joe Bechara
0416 698 888
Joe.Bechara@ljhooker.com.au

AGENCY

LJ Hooker Parramatta | Granville |
Guildford | Merrylands
(02) 9637 8555

All information contained therein is gathered from relevant third parties sources. We cannot guarantee or give any warranty about the information provided. Interested parties must rely solely on their own enquiries.



MORE DETAILS

Property ID 2GZ2F9E
Property Type BlockOfUnits
Land Area 926.7 m2

Soon Tee 0420 966 377

Area Specialist | Soon.Tee@ljhooker.com.au

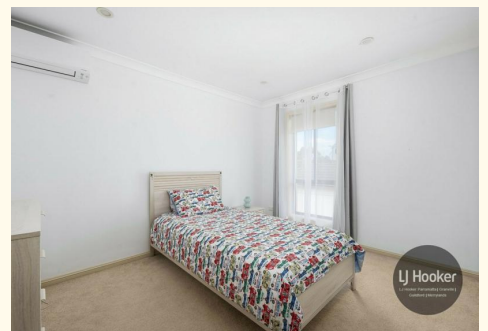
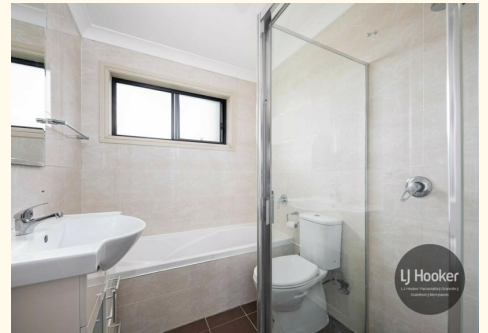
Joe Bechara 0416 698 888

Principal | Joe.Beachara@ljhooker.com.au

LJ Hooker Parramatta | Granville | Guildford | Merrylands (02) 9637 8555

42 South Street, GRANVILLE NSW 2142

granville.ljhooker.com.au | granville@ljhooker.com.au



All information contained therein is gathered from relevant third parties sources.
We cannot guarantee or give any warranty about the information provided.
Interested parties must rely solely on their own enquiries.