



7/92 John Whiteway Drive, Gosford

2  1  1 

Convenient & Lifestyle Location with Waterviews

Offering water views, comfort, and an ultra convenient location, this well maintained 2 bedroom apartment is ideal for first home buyers, downsizers, or investors seeking strong rental demand and income. Set within the secure "Quay North" complex and just moments from Gosford CBD, this property provides a low maintenance lifestyle. Perfectly positioned just a short stroll to Gosford Train Station, local eateries, and Gosford Waterfront.

Property Features:

- Two generous sized bedrooms, both with built in wardrobes, and balcony access from 2nd
- Modern kitchen with ample cupboard space, granite benchtops, stainless steel appliances, dishwasher and European Laundry
- Large modern bathroom with separate bath and shower
- Light filled open plan living and dining area opening to a private balcony with Waterview's
- Split system air conditioning in the living area
- Undercover secure car space, intercom & lift access, pool in complex
- Weekly rental potential of \$550 per week

FOR SALE

SOLD! By Brioney Messina 0414 257 178

AGENTS

Brioney Messina
0414 257 178
bmessina.gosford@ljhooker.com.au

AGENCY

LJ Hooker East Gosford
(02) 4322 5522

All information contained therein is gathered from relevant third parties sources. We cannot guarantee or give any warranty about the information provided. Interested parties must rely solely on their own enquiries.



Council Rates: \$1,212.60pa approx.
Water Rates: \$1,099.08pa approx. + usage
Strata Levies: \$1798.00pq approx.

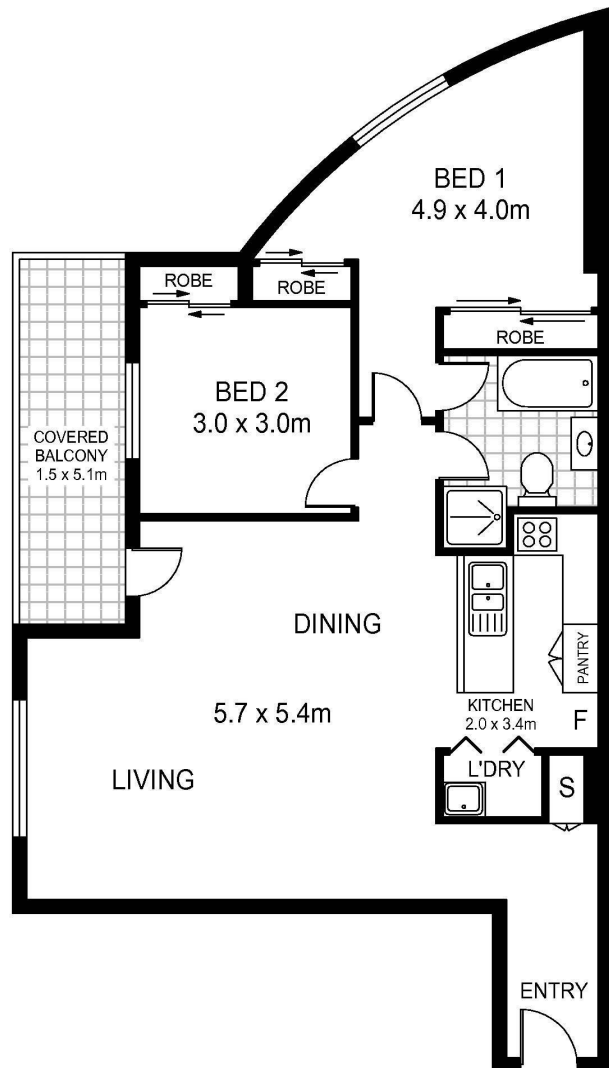
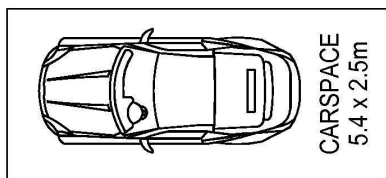
MORE DETAILS

Property ID	87FGQR
Property Type	Unit
House Size	81 m2
Including	Air Conditioning Intercom Built-in-Robes Area Views Close to Schools Close to Shops Close to Transport NBN Water Views

Brioney Messina 0414 257 178
| bmessina.gosford@ljhooker.com.au

LJ Hooker East Gosford (02) 4322 5522
Suite 5 & 6 Victoria Court, 36-40 Victoria Street, EAST GOSFORD
NSW 2250
eastgosford.ljhooker.com.au | eastgosford@ljhooker.com.au





Scale in metres. Indicative only. Dimensions are approximate. All information contained herein is gathered from sources we believe to be reliable. However we cannot guarantee its accuracy and interested persons should rely on their own enquiries

INT : 81m²

7/92 John Whiteway Drive, Gosford