



SOLD



Gosford, 6/67-69 Henry Parry Drive

Spacious single level apartment with water views,
Welcome to Casa-Vista

Wake up to breathtaking views of Brisbane Water at this spacious single level apartment located in the tightly-held Casa Vista complex. With spacious living and entertaining areas filled with beautiful natural light, multiple indoor and outdoor living zones and 3 generous bedrooms, this well-appointed apartment offers ample space to live comfortably for families & investors.

Love entertaining and spending time outdoors? This gem boasts a sun drenched outdoor covered balcony with spectacular panoramic views with a serene water aspect, plus access to the swimming pool within the complex.

Located within walking distance to the bus and train station, Central Coast Stadium, Gosford Sailing Club, local cafes, restaurants and schools and just 10 minutes from the M1 freeway, this apartment offers an idyllic lifestyle in a central and convenient location.



Disclaimer: All information contained therein is gathered from relevant third parties sources. We cannot guarantee or give any warranty about the information provided. Interested parties must rely solely on their own enquiries.

3 

2 

2 

For Sale
\$975,000

View
ljhooker.com.au/1H1SGC1

Contact
Charles Betar
0414 017 047
charles.betar@ljhooker.com.au

LJ Hooker Terrigal
(02) 4385 8444

Key features

- 3 bedrooms all with built in robes. Oversized master bedroom with walk-in robe, ensuite and access to the outdoor sunroom
- The enormous living room, bathed in natural light from the floor-to-ceiling, creates a warm and inviting atmosphere.
- Level internal access from the garage
- A spacious gourmet kitchen and plenty of storage space.
- A large, well-appointed bathroom boasting a soaking tub
- Split system aircon and ceiling fans throughout
- Tandem-style double garage with lock-up security and plenty of storage
- Swimming pool in complex
- Walking distance to Gosford's main attractions and schools. 10-minute drive to M1 freeway to Sydney or Newcastle —ideal for commuters

More About this Property

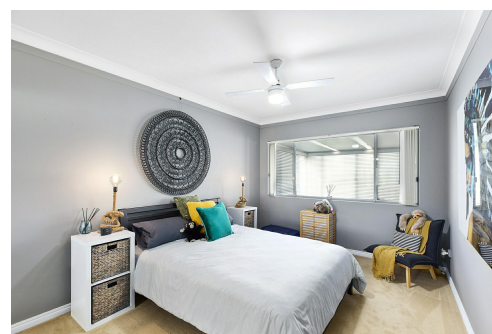
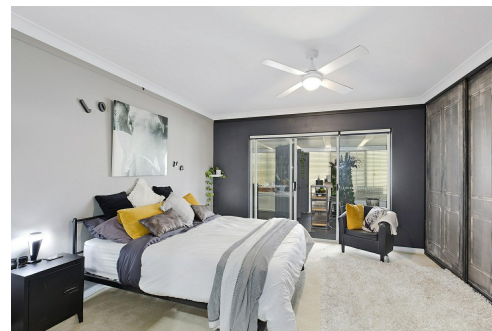
Property ID	1H1SGC1
Property Type	Apartment
House Size	229 m2
Including	Ensuite Air Conditioning Built-in-Robes Area Views Car Parking - Surface Close to Schools Close to Shops Close to Transport Family room

Charles Betar 0414 017 047

Sales Specialist - LREA | charles.betar@ljhooker.com.au

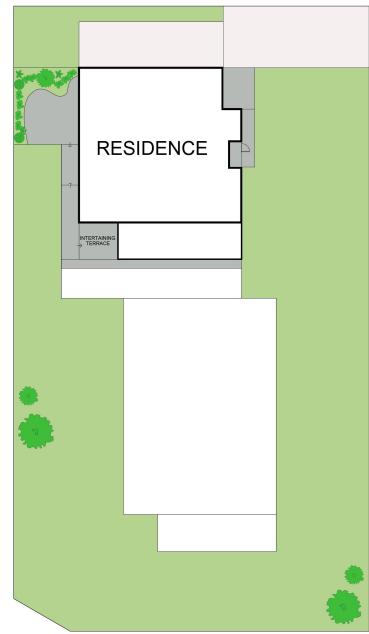
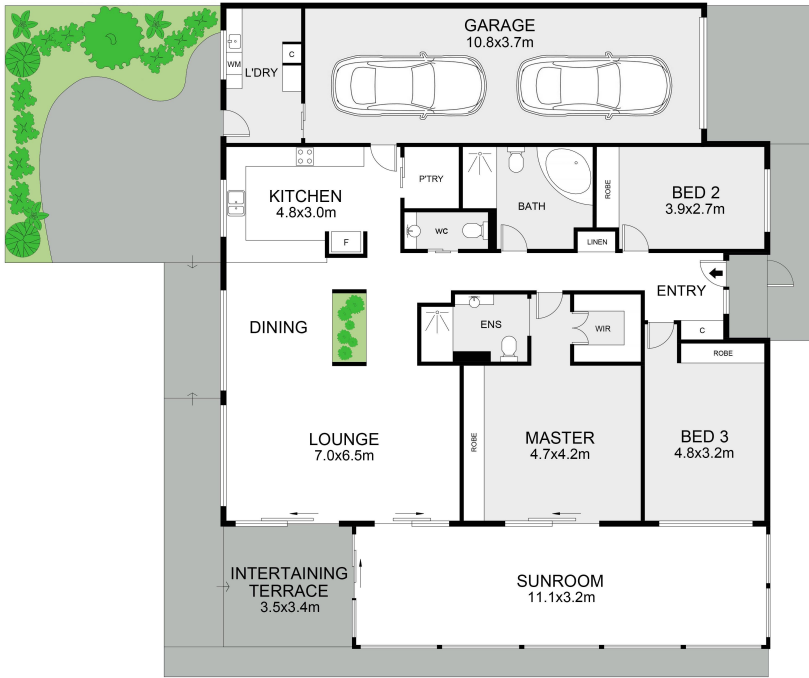
LJ Hooker Terrigal (02) 4385 8444

Shop 1 & 2, 1 Campbell Crescent, TERRIGAL NSW 2260
terrigan.ljhooker.com.au | terrigan@ljhooker.com.au



LJ Hooker Terrigal
(02) 4385 8444

Disclaimer: All information contained therein is gathered from relevant third parties sources. We cannot guarantee or give any warranty about the information provided. Interested parties must rely solely on their own enquiries.



SITE PLAN

6/67-69 Henry Parry Drive, Gosford

Scale in metres. Indicative only. Measurements and dimensions are approximate.
 All information contained herein is gathered from sources we believe to be reliable.
 However we cannot guarantee its accuracy and interested persons should rely on their own enquiries.



INT : 229m²
 EXT : 87m²



LJ Hooker Terrigal
 (02) 4385 8444

Disclaimer: All information contained therein is gathered from relevant third parties sources.
 We cannot guarantee or give any warranty about the information provided. Interested parties must rely solely on their own enquiries.