



34/62 Beane Street, Gosford

2 🏠 1 🚗 1 🚗

## Bright and Peaceful Apartment with District Views

Tightly held property, first time offered to the market in 20 years!

Set high amongst the trees and immersed in nature, this peaceful and light filled two bedroom apartment offers a rare blend of serenity and district views.

Whether you're a first home buyer looking for a move in ready residence, or an investor seeking strong future potential, this apartment ticks all the boxes with its stunning outlook and practical features.

- Private balcony with sweeping district views
- Spacious well defined living and dining zones that highlight the outlook
- Two sizeable bedrooms, both with views and built in robes
- Open plan living and dining with updated galley kitchen and internal laundry
- Under cover car space plus storage room and security intercom
- Quiet location with easy access to Gosford CBD, hospital, and train station
- Only moments to the newly built university and M1
- In ground pool in the complex

**FOR SALE**  
Contact Agent

### AGENTS

Brioney Messina  
0414 257 178  
bmessina.gosford@ljhooker.com.au

Scott Phillips  
0419 290 030  
sPhillips.eastgosford@ljhooker.com.au

### AGENCY

LJ Hooker East Gosford  
(02) 4322 5522

All information contained therein is gathered from relevant third parties sources.  
We cannot guarantee or give any warranty about the information provided.  
Interested parties must rely solely on their own enquiries.

 **LJ Hooker**

- Ideal opportunity to add value over time

Strata Levies: \$1,351.30pq approx.

Council Rates: \$1,212.59pa approx.

Water Rates: \$1,099.08pa approx. + usage

## MORE DETAILS

Property ID 763GQR  
Property Type Apartment  
Including Close to Schools  
Close to Shops  
Close to Transport

**Brioney Messina 0414 257 178**

| [bmessina.gosford@ljhooker.com.au](mailto:bmessina.gosford@ljhooker.com.au)

**Scott Phillips 0419 290 030**

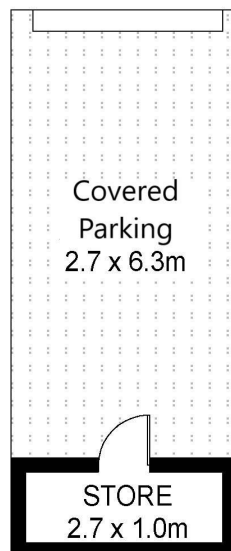
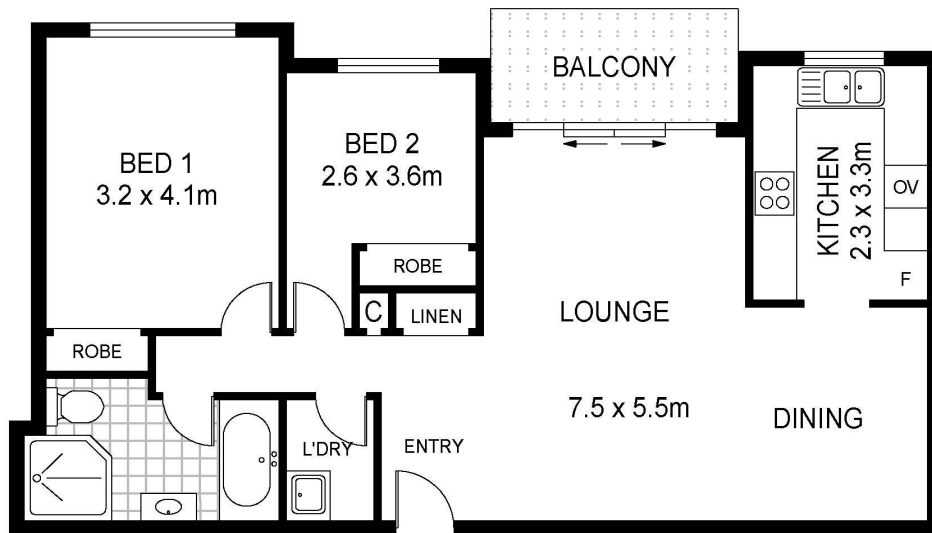
Licensed Real Estate Agent | [sphillips.eastgosford@ljhooker.com.au](mailto:sphillips.eastgosford@ljhooker.com.au)

**LJ Hooker East Gosford (02) 4322 5522**

Suite 5 & 6 Victoria Court, 36-40 Victoria Street, EAST GOSFORD  
NSW 2250

[eastgosford.ljhooker.com.au](http://eastgosford.ljhooker.com.au) | [eastgosford@ljhooker.com.au](mailto:eastgosford@ljhooker.com.au)





Scale in metres. Indicative only. Dimensions are approximate. All information contained herein is gathered from sources we believe to be reliable. However we cannot guarantee its accuracy and interested persons should rely on their own enquiries.



INT : 76m<sup>2</sup>

34/62 Beane Street, Gosford