



Gordonvale, 2 Gadalloff Close

Sold at Auction!

Elevated Prime Position with Shed & Scenic Views

Perched in the serene Wyreema Terrace Estate, this seller is committed elsewhere – make your move today!

Enjoy sweeping views from Cairns City to Walsh's Pyramid, combined with its elevated position offering peace, privacy, and potential. Whether you're seeking a low-maintenance retreat or a reliable investment, this property ticks all the boxes.

- Newly painted internally in a neutral tone, with clean lines, new fans, and light fittings – move in ready
- Two spacious, air-conditioned bedrooms, including a main bedroom with a built-in wardrobe and ensuite, while the second bedroom features a walk-in robe.
- Central kitchen with ample benchtops, a walk-in pantry, and stainless steel appliances.
- Combined living/dining areas with potential of second living/multi purpose room. Flows



Disclaimer: All information contained therein is gathered from relevant third parties sources. We cannot guarantee or give any warranty about the information provided. Interested parties must rely solely on their own enquiries.

2

2

2

For Sale
Please Call

View
ljhooker.com.au/3WX0FMB

Contact
Kim Ryan
0410 500 342
kim.ryan@ljheh.com.au

LJ Hooker Cairns Edge Hill
(07) 4053 9999

seamlessly onto the expansive timber deck – perfect for relaxing and enjoying the picturesque surroundings.

- Main bathroom with a walk-in shower.
- Convenient internal laundry for added practicality.

Additional Selling Points:

- Fully security-screened and air-conditioned.
- A substantial 7m x 6m colour bond powered shed/double garage with easy side-door access – ideal for storage, projects, or parking.
- Partly fenced 1,348sqm block, making it pet-friendly.
- Wired for a generator.
- This elevated property combines tranquil living with the convenience of Gordonvale's amenities.

Located on the southern side of Cairns, Gordonvale is a quintessential Australian country town with well-preserved streetscapes and a great sense of community. The town serves as a gateway to freshwater swimming holes like Behana Gorge and boasts schools, shopping, markets, and a golf course just minutes away.

Arrange a viewing today and unlock the potential of this remarkable home!

Auction On Site & Online Via Realtair

Saturday 15/02/2024 at 2pm

This property is being sold by auction or without a price and therefore a price guide cannot be provided. The website may have filtered the property into a price bracket for website functionality purposes.

More About this Property

Property ID	3WX0FMB
Property Type	House
House Size	222 m ²
Land Area	1348 m ²
Including	Ensuite Air Conditioning Deck Built-in-Robes Secure Parking

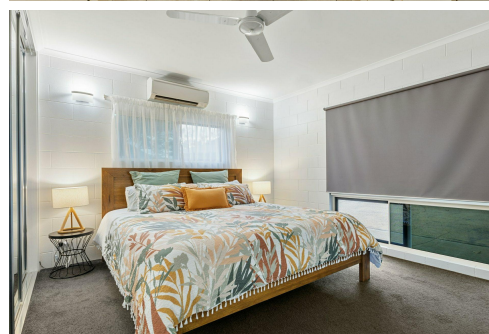
Kim Ryan 0410 500 342

Sales Consultant | kim.ryan@ljheh.com.au

LJ Hooker Cairns Edge Hill (07) 4053 9999

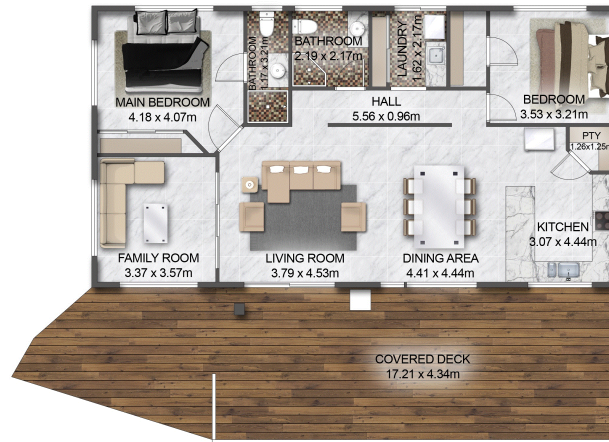
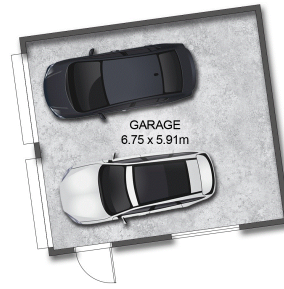
81 - 83 Woodward Street, EDGE HILL QLD 4870

cairnsedgehill.ljhooker.com.au | cairnsedgehill@ljheh.com.au



Disclaimer: All information contained therein is gathered from relevant third parties sources. We cannot guarantee or give any warranty about the information provided. Interested parties must rely solely on their own enquiries.

LJ Hooker Cairns Edge Hill
(07) 4053 9999



This floor plan including furniture, fixture measurements and dimensions are approximate and for illustrative purposes only. ©RealFocusCairns.com.au

TOTAL FLOOR AREA = 222 m² approx

2 Gadaloff Close, Gordonvale