



2/29 Burnaby Terrace, Gordon Park

SMALL BOUTIQUE COMPLEX - DIRECT STREET ACCESS


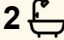
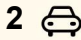
Positioned at the front in a quiet and leafy Terrace this townhome is in an exclusive complex of four, offering a private and peaceful retreat only 75m to the Kedron Brook.

Bathed in natural light and cooling breezes, the home enjoys a spacious layout complemented by a beautiful garden courtyard-creating a residence that feels more like a house than a townhouse. Perfectly positioned just 6.5km from the CBD, it presents an enviable lifestyle opportunity for couples, families, downsizers, and investors alike.

The ground floor provides the perfect setting for relaxation and entertaining, featuring a light filled tiled, air-conditioned living and dining area flowing seamlessly to a well-appointed kitchen with new appliances, a gas cooktop and dishwasher.

Step outside to discover your own private oasis-a covered patio and courtyard ideal for alfresco dining, or simply unwinding in the serenity.

Upstairs, you'll find spacious light filled three bedrooms with built-in robes, and two bathrooms, including a private ensuite off the master.

3  2  2 

FOR SALE
OFFERS

AGENTS

Richard Mirosh
0414 512 776
richard.mirosh@ljhooker.com.au

AGENCY

LJ Hooker Stafford
(07) 3357 1888

All information contained therein is gathered from relevant third parties sources.
We cannot guarantee or give any warranty about the information provided.
Interested parties must rely solely on their own enquiries.

 **LJ Hooker**

A laundry, and secure double side by side lockup garage complete the lower level.

Property highlights:

- Quiet position at the front of a boutique complex of four
- Open-plan light filled living and dining area with tiled floors and air-conditioning
- Modern kitchen, gas cooktop, and new appliances and dishwasher
- Covered patio and private garden courtyard for outdoor entertaining
- Three bedrooms with built-in robes and ceiling fans
- Master bedroom with private ensuite
- Additional powder room, internal laundry, and double lock-up garage
- Air-conditioning, ceiling fans, and security screens throughout
- Approximately 15 years old

A quality location only 75m to the Kedron Brook, adding a welcoming escape from the hustle and bustle of everyday living. With 23km of bikeways, stretching from Mitchelton to Nudgee beach and hectares of parkland at your doorstep, this unique location will suit the most active lifestyle.

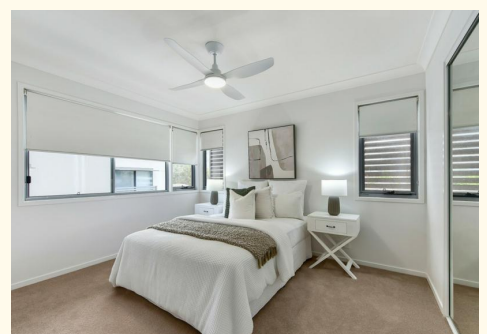
You will feel totally connected with a direct link to the city, a short stroll to buses redefining easy commuting. Whether you are homeward bound or heading out, the CBD, Airport via the tunnel, Lutwyche Shopping Centre, Royal Brisbane Hospital and an array of shops and restaurants are all just minutes away.

MORE DETAILS

Property ID	1E4KF4N
Property Type	Townhouse
Including	Ensuite Toilets (3) Courtyard Balcony Dishwasher Outdoor Entertaining Built-in-Robes Fully Fenced

Richard Mirosch 0414 512 776
Principal | richard.mirosch@ljhooker.com.au

LJ Hooker Stafford (07) 3357 1888
205 Stafford Road, STAFFORD QLD 4053
stafford@ljhooker.com.au | stafford@ljhooker.com.au





MIDDLE LEVEL



UPPER LEVEL



LOWER LEVEL

2/29 Burnaby Tce,
Gordon Park



FLOOR AREA SIZES

Internal	133.8m ²
External	24.7m ²
Garage	39.8m ²
TOTAL	198.3m²

Whilst every attempt has been made to ensure the accuracy of the floor plans contained here, measurements of doors, windows, rooms and any other items are approximate and no responsibility is taken for any error, omission or misstatement.

These plans are for representation purposes only. Provided by primepixels.com.au