



403/11 Moree Street, Gordon


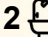

Another SOLD by Kenny Gong of LJ Hooker

The essence of timeless sophistication, this deluxe modern penthouse showcases a high-quality build by renowned IPM and innovative architectural craftsmanship by Nettleton Tribe. Poised in the tightly-held and finest quality "Treetops" block, perfectly positioned in the heart of Gordon, this extra-spacious three-bedroom modern penthouse delivers generous proportions and wonderful comfort. The outstanding intuitive design focuses around a grand open-plan living room with tall glass and a seamless connection to the equally impressive wraparound balcony, finished with composite decking, offering absolute luxury and a relaxing lifestyle capturing day-long sunshine for you and your family.

Perfectly placed for ultimate convenience, it's just a short stroll to Gordon Centre shops, the station and cafes. It is within the coveted Gordon West Public School catchments, and offers excellent proximity to top private schools.

Property Features:

- Expansive total floor size of 254sqm, bright interiors
- Built by renowned IPM and architectural craftsmanship by Nettleton Tribe

3  2  2 

FOR SALE
SOLD prior to Auction

AGENTS

Kenny Gong
0456 887 000
kgong@ljhookergordon.com.au

AGENCY

LJ Hooker Gordon
(02) 9496 8000

All information contained therein is gathered from relevant third parties sources.
We cannot guarantee or give any warranty about the information provided.
Interested parties must rely solely on their own enquiries.

 **LJ Hooker**

- Oversized living/dining area flowing to outdoor entertaining areas
- Huge wrap-around balcony capturing treetop views and Northerly sun
- Caesarstone and gas kitchen with premium Miele and Fofite appliances
- Spacious bedrooms with sizeable built-in robes
- Elegant bathroom with a tub and separate shower
- Ducted A/C, laundry, video intercom lift access, engineered floorboards
- Two secure underground parking spaces and large storage cage
- Within Gordon West Public School catchment and close to elite schools

External Features:

- Sun master blackout sunscreen mesh
- Irrigation system for the gardens
- Set amidst manicured garden surrounds

Location Features:

- 450 metres to Gordon Station
- 250 metres to the Gordon Centre
- 250 metres to cafes and eateries
- Rapid access to Macquarie business hub
- Nearby to Pymble Ladies' College
- Minutes to Ravenswood School
- 850 metres to Gordon Golf Club

DISCLAIMER: All information contained herein is gathered from sources we believe to be reliable. We have no reason to doubt its accuracy; however, we cannot guarantee it. This information is not to be used in formalising any decision nor relied upon by a third party without the expressed written permission of LJ Hooker Gordon.

MORE DETAILS

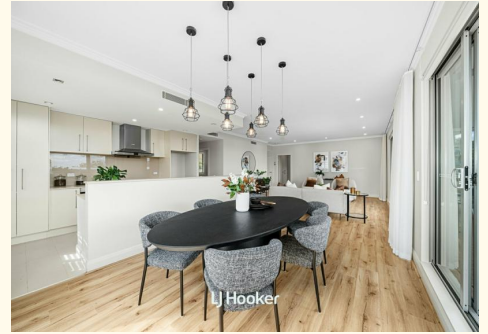
Property ID	T2ZHJX
Property Type	Unit
House Size	254 m2
Including	Ensuite
	Ducted Cooling
	Ducted Heating
	Balcony
	Outdoor Entertaining
	Floorboards
	Built-in-Robes
	Secure Parking

Kenny Gong 0456 887 000

Managing Director | Sales Executive | kgong@ljhookergordon.com.au

LJ Hooker Gordon (02) 9496 8000

Shop 1, 777-779 Pacific Highway, GORDON NSW 2072
gordon.ljhooker.com.au | reception@ljhookergordon.com.au

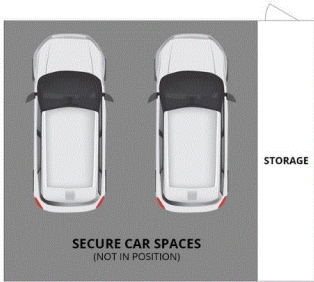


403/11 Moree Street, Gordon, NSW 2072

Internal & Balcony	216m ² (Approx.)
Car spaces & Storage	38m ² (Approx.)
Total	254m² (Approx.)



Scale in metres. Dimensions are approximate. All information contained herein is gathered from sources we believe to be reliable, however we cannot guarantee its accuracy and interested persons should rely on their own enquiries.



LJ Hooker Gordon

All information contained therein is gathered from relevant third parties sources. We cannot guarantee or give any warranty about the information provided. Interested parties must rely solely on their own enquiries.

