

Gordon, 19A Bushlands Avenue

Contemporary Retreat with all you could dream of

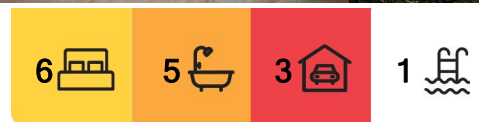
Nestled in one of the suburb's most coveted locations, this contemporary hidden gem offers an unrivalled blend of luxury, privacy, and family-focused living, all seamlessly integrated with its natural surroundings.

From the moment you arrive, you're welcomed by an air of exclusivity and refinement, marking this as a true haven for those seeking an extraordinary lifestyle. The home's design is rich in character, featuring elegant parquet floors, exquisite finishes, and glass walls that invite sunlight to flood the space.

At the heart of the home is a grand family room, designed to cater to both intimate gatherings and large-scale entertaining. This expansive area flows effortlessly into the central courtyard and garden, perfectly balancing relaxation and sophistication. The formal lounge and dining rooms, framed by lush garden views and opening onto a terrace, provide an exquisite setting for hosting dinner parties or enjoying quiet, luxurious evenings.



Disclaimer: All information contained therein is gathered from relevant third parties sources. We cannot guarantee or give any warranty about the information provided. Interested parties must rely solely on their own enquiries.



For Sale
Another One Sold By Jing Peng!

View
ljhooker.com.au/SPQHJX

Contact
Jing Peng
0424 262 673
jingpeng@ljhookergordon.com.au

LJ Hooker Gordon
(02) 9496 8000

The open-plan kitchen is a true culinary masterpiece. Awash with natural light, it features premium appliances, a butler's pantry, and ample space for casual dining. Adjacent is a stylish casual living area, creating the ideal hub for everyday family life.

The home continues to impress with a separate rumpus room and six generously sized bedrooms. The master suite is a private oasis, complete with a luxurious ensuite and an abundance of natural light. Each bathroom throughout the residence exudes elegance and sophistication, featuring high-end finishes and materials designed to offer indulgence at every turn.

Designed for effortless indoor-outdoor living, the spacious interiors flow harmoniously into a beautifully landscaped central courtyard. The connection between indoor and outdoor spaces is perfect for entertaining or enjoying quiet family moments, with every room radiating warmth and comfort.

The outdoor amenities elevate this property to a new level. A sun-drenched swimming pool and private sauna sit within manicured, north-facing gardens, providing a tranquil escape for relaxation or fun-filled family days. The grounds are designed for entertainment and leisure, with ample space for children to play and multiple alfresco living areas that enhance the luxurious lifestyle. The all-weather tennis court, complete with a private viewing lawn, ensures this home meets every family's lifestyle needs.

Located just a short stroll from Gordon's finest shops, restaurants, and prestigious schools, this home offers the perfect blend of secluded serenity and urban convenience. With every detail carefully crafted for space, comfort, elegance, and location, this exceptional residence redefines luxury family living. It invites you to experience a lifestyle of timeless beauty—a place where cherished memories are made and celebrated for generations to come.

DISCLAIMER: All information contained herein is gathered from sources that we believe reliable. We have no reason to doubt its accuracy, however we cannot guarantee it. This information is not to be used in formalising any decision nor used by a third party without the expressed written permission of LJ Hooker Gordon.

More About this Property

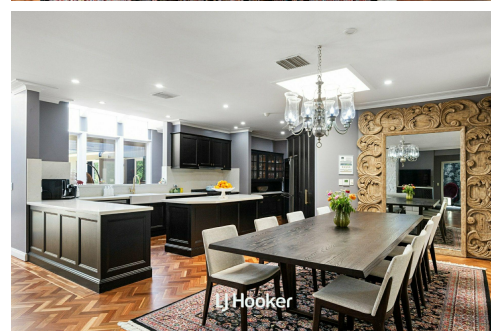
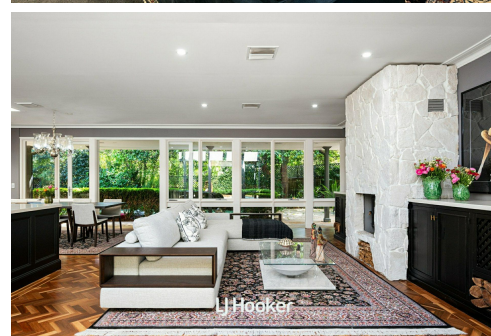
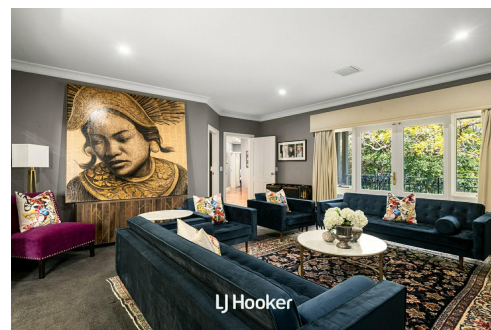
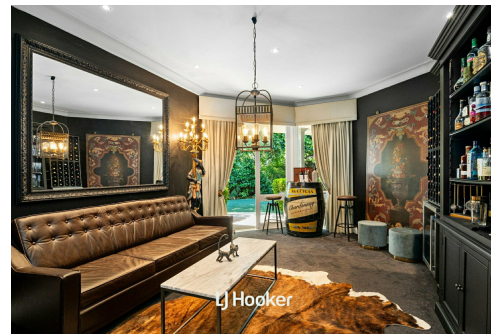
Property ID	SPQHJX
Property Type	House
House Size	429 m2
Land Area	2656 m2
Including	Air Conditioning Toilets (5) Pool Tennis Court Courtyard Outdoor Entertaining Built-in-Robes Secure Parking Fully Fenced Sauna

Jing Peng 0424 262 673

Principal | jingpeng@ljhookergordon.com.au

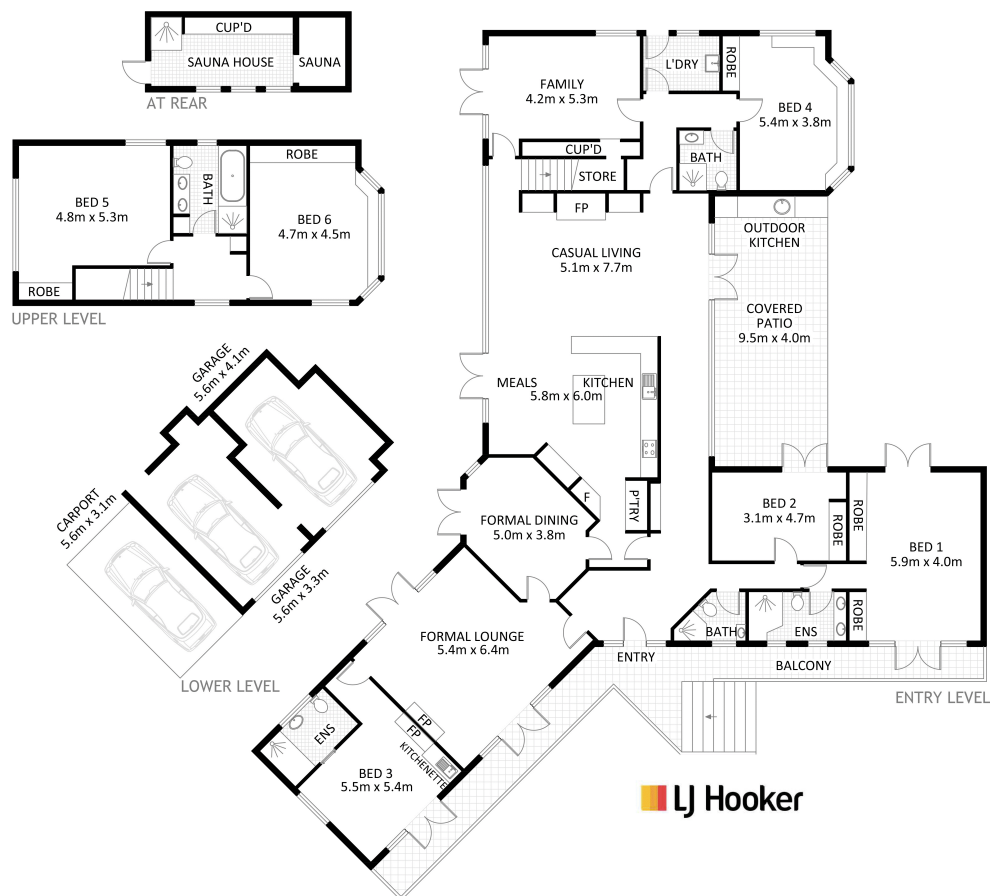
LJ Hooker Gordon (02) 9496 8000

Shop 1, 777-779 Pacific Highway, GORDON NSW 2072
gordon.ljhooker.com.au | reception@ljhookergordon.com.au



Disclaimer: All information contained therein is gathered from relevant third parties sources.
 We cannot guarantee or give any warranty about the information provided. Interested parties must rely solely on their own enquiries.

LJ Hooker Gordon
(02) 9496 8000



INTERNAL AREA APPROX. 429m²

TOTAL LAND SIZE APPROX. 2,656m²

19A Bushlands Avenue Gordon

Disclaimer: Plans shown are for presentation purposes and are not part of any legal document. All measurements and figures are approximate.