


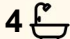

Gordon

Prime Gordon Mansion with Tennis Court at an Unrepeatable Price Point

Experience the epitome of luxury living in this prestigious 6-bedroom mansion with its own tennis court and pool, a private oasis nestled on an elevated and sunlit block, set well back from the road for ultimate tranquility. This solid brick home is a testament to superior craftsmanship, timeless design, and an enviable lifestyle with its magnificent lot of 1,827sqm approx., on a north to rear block. This non conservation and non heritage listed residence has only had two owners since it was built, circa 1995, who enjoyed the quality built home and convenient location.

As you step through the grand entrance, you will be greeted by a world of elegance and sophistication. The expansive layout boasts six generously proportioned bedrooms, each a sanctuary of comfort and tranquility and all with built in robes. The oversized master bedroom offers additional luxury with a spa bath and separate "his" and "hers" walk-in robes.

Offering a flexible layout for large or multi-generational families with formal lounge and dining as well as casual living, casual dining and a

6  4  3 

FOR SALE
Contact Agent

VIEW
By Appointment

AGENTS
Jing Peng
0424 262 673
jingpeng@ljhookergordon.com.au

AGENCY
LJ Hooker Gordon
(02) 9496 8000

All information contained therein is gathered from relevant third parties sources. We cannot guarantee or give any warranty about the information provided. Interested parties must rely solely on their own enquiries.

 **LJ Hooker**

spacious family retreat. The open-plan living and dining areas exude warmth and hospitality, making them perfect for hosting intimate gatherings or large-scale entertaining. The spacious kitchen provides ample space for culinary exploration and adjoins a family breakfast/meals area with large sunny bay window, overlooking the back lawn.

The property's exterior is equally impressive, featuring a full-sized north/south tennis court that will surely delight sports enthusiasts. Here, you can host friendly matches under the sun or practice your backhand swing in solitude. The sunny pavilion overlooks the in-ground swimming pool and the level backyard, perfectly suited for families.

This residence is more than just a home; it's a lifestyle. It's waking up to the serene views of the surrounding lush greenery, it's enjoying a cup of coffee on your private balcony as the sun rises. It's hosting glamorous dinner parties in your formal dining room. It's the joy of having your personal retreat where every day feels like a vacation.

Live the life you've always dreamed of in this magnificent home where luxury, comfort, and style await in every corner. This is not just a property on offer; this is an invitation to a life of unparalleled luxury.

Walk to Ravenswood School for Girls, minutes to Pymble Ladies College, within the sought after Gordon East Public and Killara High catchments. Walk to Gordon shops and station through pedestrian walkway via Mt William Street only 950m approximately.

DISCLAIMER: All information contained herein is gathered from sources that we believe reliable. We have no reason to doubt its accuracy, however we cannot guarantee it. This information is not to be used in formalising any decision nor used by a third party without the expressed written permission of LJ Hooker Gordon.

MORE DETAILS

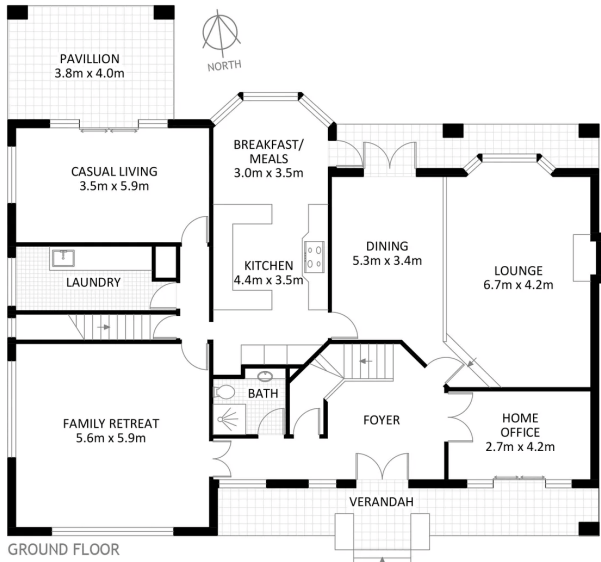
Property ID	TCVHJX
Property Type	House
Land Area	1827 m2
Including	Air Conditioning Toilets (4) Pool Tennis Court Dishwasher Outdoor Entertaining Built-in-Robes Secure Parking

Jing Peng 0424 262 673

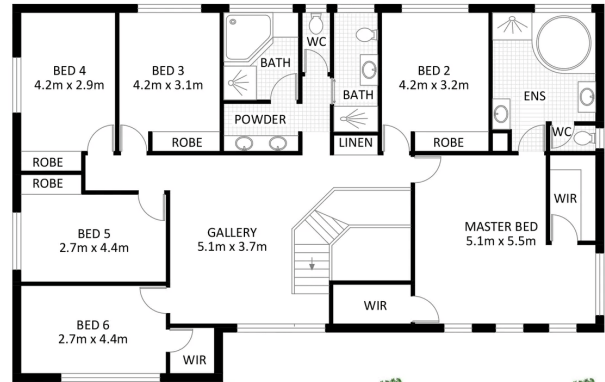
Principal | jingpeng@ljhookergordon.com.au

LJ Hooker Gordon (02) 9496 8000

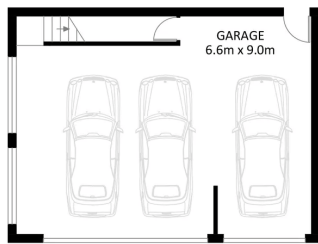
Shop 1, 777-779 Pacific Highway, GORDON NSW 2072
gordon.ljhooker.com.au | reception@ljhookergordon.com.au



GROUND FLOOR



FIRST FLOOR



LOWER GROUND FLOOR



HOUSE FLOOR AREA
 GROUND FLOOR APPROX. 238m²
 FIRST FLOOR APPROX. 188m²
 LOWER GROUND FLOOR APPROX. 64m²
 TOTAL APPROX. 490m²
 LOT SIZE APPROX. 1827m²



10 Carlotta Avenue, Gordon

Disclaimer: Plans shown are for presentation purposes and are not part of any legal document. All measurements and figures are approximate.

All information contained therein is gathered from relevant third parties sources. We cannot guarantee or give any warranty about the information provided. Interested parties must rely solely on their own enquiries.

