



Unit 1/50 Mountain View Drive, Goonellabah

3  1  1 

## Duplex with Northern Ridges View

**FOR SALE**  
\$600,000 - \$650,000

### AGENTS

Vicki Heathwood  
0432 247 264  
vheathwood.alstonville@ljhooker.com.au

### AGENCY

LJ Hooker Alstonville  
(02) 6628 1163

Beautifully positioned overlooking the magnificent Nightcap Ranges, this well designed split-level duplex with features is ready for a new owner. Imagine relaxing on the deck with a cuppa and enjoying views over the rural vista and mountain ranges.

#### Features :

- 3 bedrooms with built-in robes, main with air-conditioning
- Generous open plan lounge and dining adjoin the timber deck, capturing northerly views plus new carpet
- Well equipped kitchen with dishwasher, pantry and ample cupboard space
- Three-way bathroom plus laundry
- Single remote garage with internal access
- Solar hot water, wood pellet heater and ceiling fans
- Terraced yard with room for the kids to play and nature at your back door

Don't miss this opportunity, with no body corporate and a fantastic location.

Inspections are invited with exclusive agent Vicki Heathwood.

All information contained therein is gathered from relevant third parties sources.  
We cannot guarantee or give any warranty about the information provided.  
Interested parties must rely solely on their own enquiries.

 **LJ Hooker**

## MORE DETAILS

Property ID 16QPF55  
Property Type Unit  
Including Air Conditioning  
Balcony  
Deck  
Dishwasher  
Built-in-Robes  
Fully Fenced  
Remote Garage  
Solar Hot Water

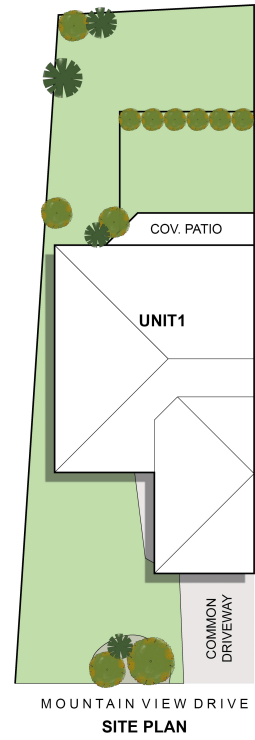
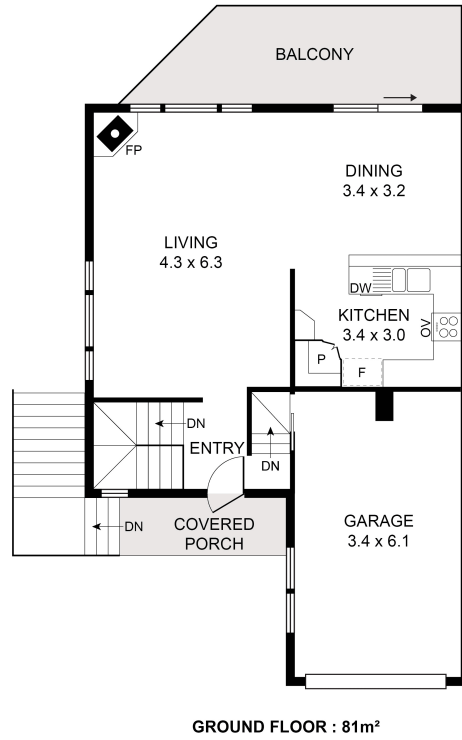
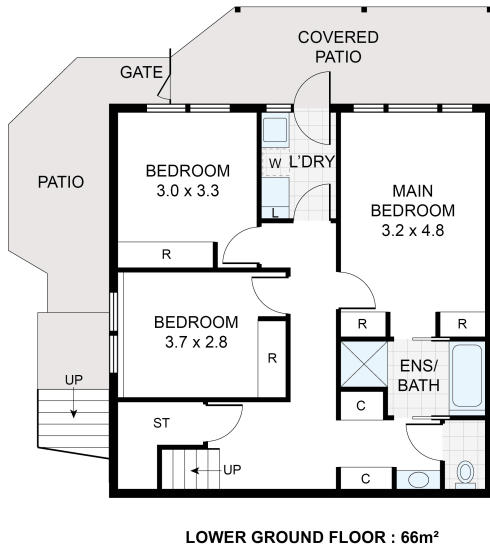
**Vicki Heathwood 0432 247 264**

Sales Consultant/Licensed Real Estate Agent |  
vheathwood.alstonville@ljhooker.com.au

**LJ Hooker Alstonville (02) 6628 1163**

Shop 16 The Plaza, ALSTONVILLE NSW 2477  
alstonville.ljhooker.com.au | alstonville@ljhooker.com.au





APPROXIMATE AREAS
INTERNAL FLOOR SPACE - 127m <sup>2</sup>
EXTERNAL FLOOR SPACE - 53m <sup>2</sup>
GARAGE - 20m <sup>2</sup>

1/50 Mountain View Drive, Goonellabah

Floor Plan Disclaimer: Media Drive (MD) floor plans / site plans are intended as an approximate guide only. No representations or warranties of any nature are given or intended and any person using this information other than as a guide should always rely on their own enquiries. Media Drive property marketing services / 04 1979054 / Photography, Floor plans, Video, Aerial photography / www.mediadrive.com.au



All information contained therein is gathered from relevant third parties sources. We cannot guarantee or give any warranty about the information provided. Interested parties must rely solely on their own enquiries.

