



15 Mountain View Drive, Goonellabah

Family home with Elevated Views

Tucked away on a 1,000 sqm block showcasing valley views, this family home offers space and lifestyle with the convenience to the Goonellabah shopping centre, medical centres, University and Lismore CBD.

Relax on the privately situated front deck taking in the expansive views across the ranges.

Features

- 4 bedrooms with built-in-robos, main with en-suite & walk in robe
- Modern kitchen with dishwasher, induction cooktop & pantry plus casual dining
- Sunny light filled living areas adjoining the spacious balcony with views across to the NightCap Ranges
- Main bathroom with separate toilet / Laundry with storage
- Private fenced terraced yard with gardens & space
- Solar panels 6.6 kw / Solar hot water
- Airconditioning x 2
- Single garage

This property would certainly suit families or retirees who are looking for a home in a top location.

4  2  2 

FOR SALE
\$760,000 - \$795,000

AGENTS

Vicki Heathwood
0432 247 264
vheathwood.alstonville@ljhooker.com.au

AGENCY

LJ Hooker Alstonville
(02) 6628 1163

All information contained therein is gathered from relevant third parties sources.
We cannot guarantee or give any warranty about the information provided.
Interested parties must rely solely on their own enquiries.

 **LJ Hooker**

Inspections are invited with Exclusive Agent: Vicki Heathwood.

MORE DETAILS

Property ID	16KGF55
Property Type	House
Land Area	1000 m2
Including	Ensuite
	Air Conditioning
	Balcony
	Deck
	Dishwasher
	Floorboards
	Built-in-Robes
	Fully Fenced
	Solar Panels
	Solar Hot Water

Vicki Heathwood 0432 247 264

Sales Consultant/Licensed Real Estate Agent |
vheathwood.alstonville@ljhooker.com.au

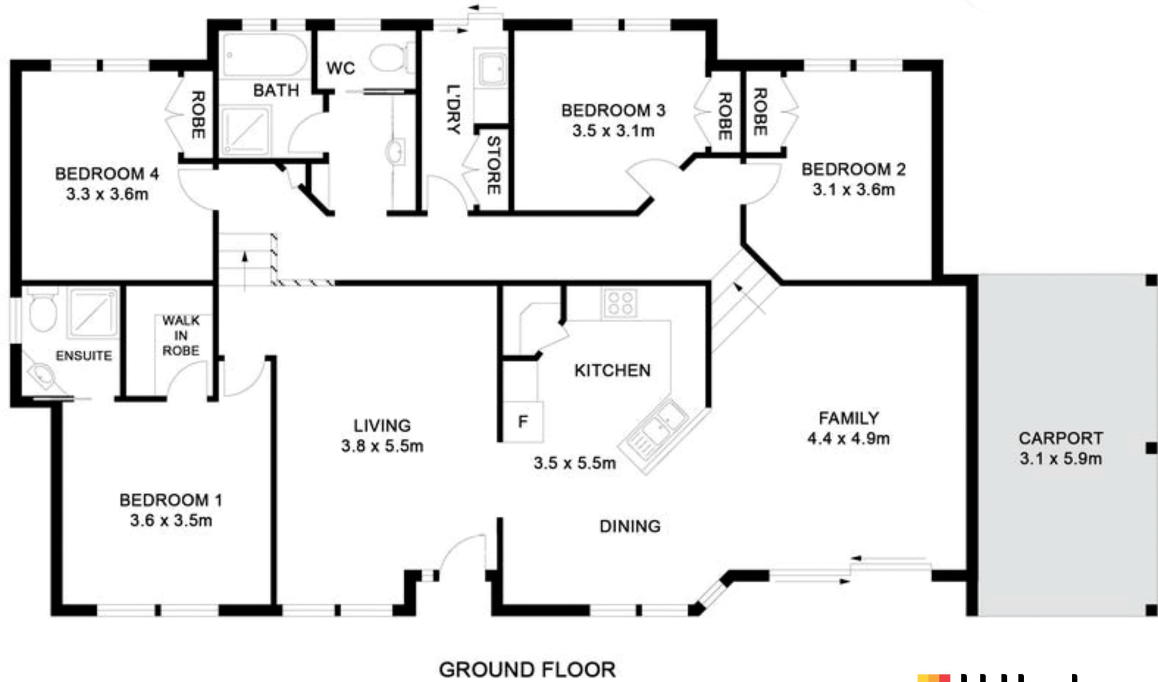
LJ Hooker Alstonville (02) 6628 1163

Shop 16 The Plaza, ALSTONVILLE NSW 2477
alstonville.ljhooker.com.au | alstonville@ljhooker.com.au



All information contained therein is gathered from relevant third parties sources.
We cannot guarantee or give any warranty about the information provided.
Interested parties must rely solely on their own enquiries.

15 Mountain View Drive
GOONELLABAH



GROUND FLOOR

 **LJ Hooker**

Alstonville

alstonville@ljhooker.com.au