
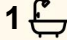





114 Pineapple Road, Goonellabah

3  1  2 

Gorgeous Farmhouse with Timeless Charm

Embrace the warmth and character of this gorgeous 3-bedroom, 1-bathroom farmhouse, perfectly positioned on 2.5 acres. Offering the ideal balance of space, privacy, and convenience, it's just a short stroll to the local K-12 school and moments from town amenities.

Overflowing with rustic country charm, this beautiful home blends classic period features with modern comforts. Inside, you are greeted with polished timber floors, rich timber walls, and high ceilings. Multiple living spaces include a separate lounge space and a generous open-plan kitchen, dining, and living area. For the entertainers, a large wraparound verandah provides the perfect space for gatherings or quiet moments soaking up the scenery.

The modernised kitchen retains its country appeal with feature cabinetry and open shelving, while offering all the conveniences of contemporary living. Expansive windows capture garden views from every angle, seamlessly connecting indoors with the surrounding landscape.

Set amidst tropical greenery, the acreage features open lawns, peaceful outdoor sitting areas, and plenty of room for kids, pets, or even a hobby farm. A large shed, once used for dairy farming, adds

FOR SALE
Contact Agent

AGENTS

Luke Shay
0416 275 607
luke.shay@ljhooker.com.au

Michael Shay
0427 862 711
mshay.admiral@ljhooker.com.au

AGENCY

LJ Hooker Ballina
(02) 6686 2711

All information contained therein is gathered from relevant third parties sources.
We cannot guarantee or give any warranty about the information provided.
Interested parties must rely solely on their own enquiries.

 **LJ Hooker**

versatility and potential for storage, a workshop, or future projects.

Features include:

- " 2.5 acres of lush, private land on the edge of town
- " Walking distance to local K-12 school and close to shops, cafes, and services
- Beautifully maintained character home with rich timber features throughout
- Light-filled open-plan living and dining plus multiple separate living zones
- Updated kitchen with modern appliances
- Tropical gardens, wraparound verandah, and tranquil entertaining spaces
- Large shed with history as a dairy farming building, ideal for storage or workshop use
- Town water

A rare offering that perfectly combines charm, tranquillity, and convenience, your own slice of tropical paradise on the doorstep of town.

MORE DETAILS

Property ID	1YACF5A
Property Type	House
Land Area	1 hectare
Including	Fire Place Balcony Dishwasher Floorboards

Luke Shay 0416 275 607

Salesperson | luke.shay@ljhooker.com.au

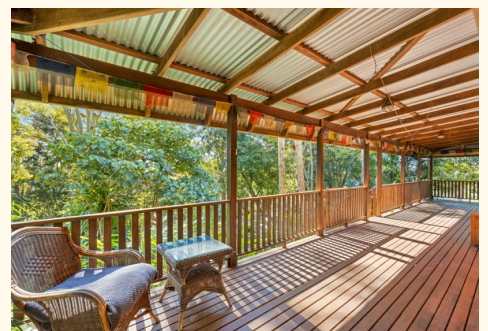
Michael Shay 0427 862 711

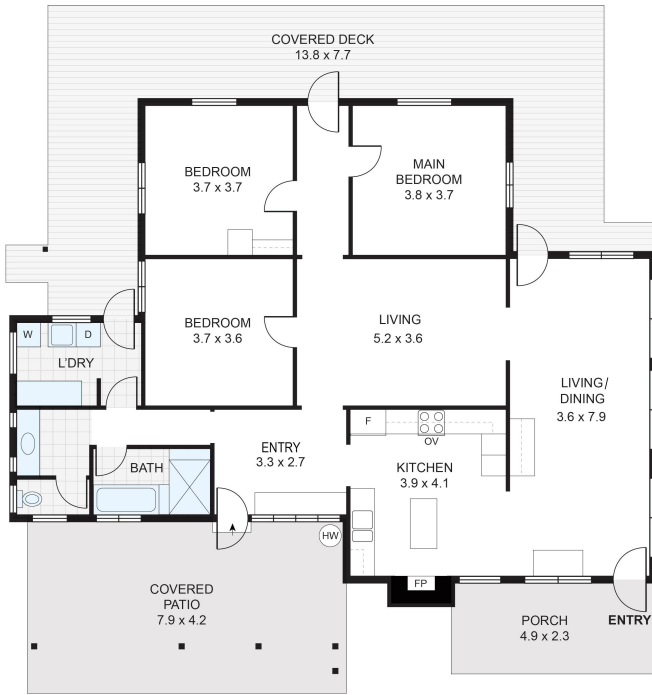
Licensee | mshay.admiral@ljhooker.com.au

LJ Hooker Ballina (02) 6686 2711

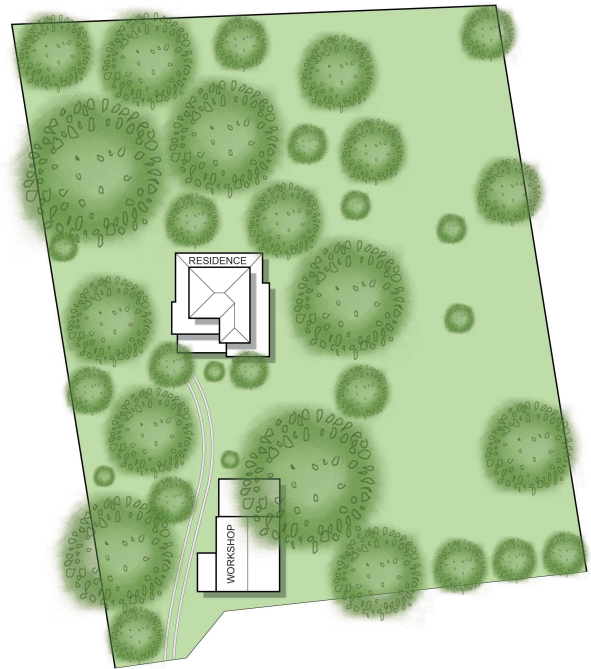
87 - 89 River Street, BALLINA NSW 2478

ballina.ljhooker.com.au | ballina@ljhooker.com.au





RESIDENCE : 144m²

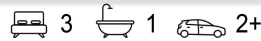


PINEAPPLE ROAD

SITE PLAN

114 Pineapple Road, Goonellabah

Floor Plan Disclaimer: Media Drive (MD) floor plans / site plans are intended as an approximate guide only. No representations or warranties of any nature are given or intended and any person using this information other than as a guide should always rely on their own enquiries. Media Drive property marketing services / 041979054 / Photography, Floor plans, Video, Aerial photography / www.mediadrive.com.au



APPROXIMATE AREAS
INTERNAL FLOOR SPACE - 144m ²
EXTERNAL FLOOR SPACE - 101m ²

All information contained therein is gathered from relevant third parties sources. We cannot guarantee or give any warranty about the information provided. Interested parties must rely solely on their own enquiries.

