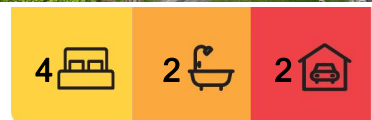


Goodna, 171 Brisbane Terrace

Absolute Waterfront Home - A Riverside Paradise

Experience the ultimate riverside lifestyle with this rare and unique waterfront property. Nestled on an expansive 1,652sqm block that gently slopes down to the Brisbane River, this home offers direct access to the water, making it perfect for families and adventurers alike. Spend your days fishing, canoeing, exploring the riverbanks, or simply relaxing with a BBQ as you take in the serene atmosphere. With uninterrupted views across the river and into farmland, this is a retreat where you can enjoy the beauty and peace of nature from your own backyard.

The home itself is a fully renovated low-set that is move in ready. Featuring four spacious bedrooms, two bathrooms and a large double car port, it provides ample room for families of all sizes. Every detail has been thoughtfully upgraded, with a brand-new kitchen boasting sleek finishes, modern bathrooms designed for both style and comfort, fresh flooring throughout, and updated paint, ceiling fans, and lights.



For Sale
FOR SALE BY NEGOTIATION

View
l.jhooker.com.au/1E8NH31

Contact
Brock Ward
0402 378 719
b.ward@l.jhookerproperty.com.au



Disclaimer: All information contained therein is gathered from relevant third parties sources. We cannot guarantee or give any warranty about the information provided. Interested parties must rely solely on their own enquiries.

LJ Hooker Annerley | Yeronga |
Salisbury
(07) 3848 7369

Designed for ease of living, the property offers all-level access from the street, making it wheelchair-friendly and an ideal choice for those looking to downsize into a comfortable and accessible space. There is a large study/home office which is ideal for those who work from home. The master bedroom is a huge parents retreat with large walk in robe and separate ensuite. The living, dining and master bedroom command sweeping views across the rear yard and into the river.

The internal flows effortlessly through to the external with a full length patio facing the river, there is a fire pit section that creates the perfect place to pull up a chair and watch the world go by with wine in hand on a cool winter night. Entertainers will be delighted to see not only the rear patio but a huge concreted terrace space situated in the rear yard. This provides ample space for dinner parties but could also be used as a fitness area with a flat space ideal for yoga or setting up a home gym.

Despite its secluded riverside setting, the location offers unmatched convenience. Situated just 25km from Brisbane CBD, the property provides the perfect balance of privacy and accessibility. Goodna Woolworths is only 2km away, Gables Golf Course is a short 3km drive, and Redbank Plaza is just five minutes from your doorstep. Enjoy the vibrant local community with bowls clubs, pubs, and other amenities along Brisbane Terrace all within easy reach. Best of all, this home was not affected by the 2011 or 2022 floods, giving you peace of mind and security.

This is more than just a home - it's a lifestyle opportunity. Contact your selling agent Brock Ward to secure your inspection today.

More About this Property

Property ID	1E8NH31
Property Type	House
House Size	182 m2
Land Area	1652 m2

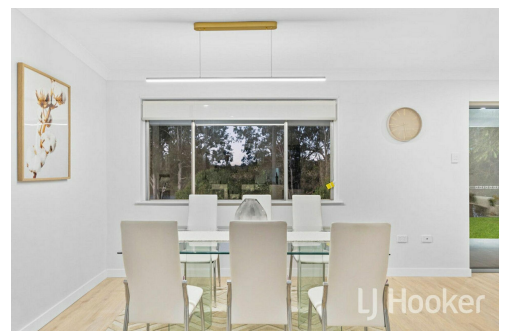
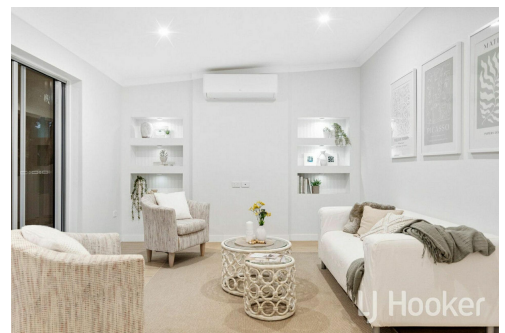
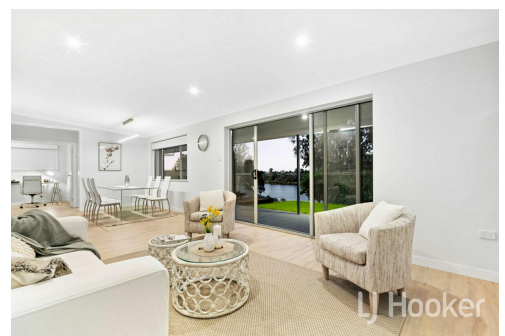
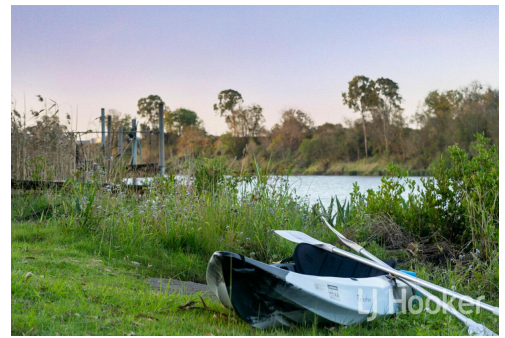
Brock Ward 0402 378 719

Sales & Marketing Consultant | b.ward@ljhookerproperty.com.au

LJ Hooker Annerley | Yeronga | Salisbury (07) 3848 7369

443 Ipswich Road, ANNERLEY QLD 4103

annerleyyeronga.ljhooker.com.au | admin@ljhookerproperty.com.au



Disclaimer: All information contained therein is gathered from relevant third parties sources. We cannot guarantee or give any warranty about the information provided. Interested parties must rely solely on their own enquiries.

**LJ Hooker Annerley | Yeronga |
Salisbury
(07) 3848 7369**

LEGEND

- 1 RESIDENCE
- 2 PORCH
- 3 CARPORT
- 4 PATIO
- 5 SHED



Brisbane Terrace



INTERNAL AREA : 182M²
EXTERNAL AREA : 18M²
LAND AREA : 1652M²

LJ Hooker

All information contained in this document is from sources we believe to be accurate. However we cannot guarantee its accuracy. Interested persons should make and rely on their own enquiries in relation to measurements, dimensions, layout, furniture and descriptions.