

Golden Grove, 42 Tuscan Road

Simply Stunning!

5  2  3 

For Sale

\$1,250,000 - \$1,350,000

View

ljhooker.com.au/2B81GJU

Contact

Shaun Roberts

0435 367 534

shaunr@ljhsales.com.au

Craig Ricciuto

0417 806 329

craigr@ljhsales.com.au

Situated on a large 660m² (approx.) corner allotment with elevated views, is this stunning five-bedroom family home located in the popular 'The Settlement' Estate of Golden Grove. Built in 2012, the home offers an abundance of living indoors for large families thanks to its spacious open plan and flexible design. The kitchen is a chefs delight and features quality 30mm stone benchtops and 900m ILVE oven with rangehood and walk-in pantry. Perfect for entertaining thanks to a good size backyard and undercover entertaining, you're sure to enjoy many BBQs with family and friends throughout the year. The triple car garage under roof is ideal for those looking for extra parking space for vehicles and the rear workshop/shed is accessible via remote sliding gate from Captain Robertson Ave.

Features include:

- * Spacious master bedroom with retreat, walk-in robe and ensuite
- * Bedroom two, three, four and five all with built-in robes and ceiling fans
- * Open-plan family and meals



Disclaimer: All information contained therein is gathered from relevant third parties sources.

We cannot guarantee or give any warranty about the information provided. Interested parties must rely solely on their own enquiries.

**LJ Hooker Greenwith | Golden Grove
| Mawson Lakes | Modbury
(08) 8289 6660**

- * Modern kitchen with 30mm Caesarstone benchtops, 900mm ILVE oven, rangehood, Miele dishwasher, walk-in pantry
- * Front formal lounge and formal dining
- * Large upstairs living perfect for those with children
- * Ducted reverse cycle air conditioning throughout
- * Remote blinds in main bedroom, lounge and dining, and upstairs living
- * 15kw Solar panel system with 13kw battery to save \$ on your electricity bills
- * Outdoor entertaining with café blinds
- * Large lawn back yard with irrigation
- * Paved courtyard with manicured landscaped gardens
- * 3 car auto garage
- * Remote gated access to side yard and workshop/shed
- * Hoselink Hose Reels are not included in the home sale

Backing onto rural farmland and being located in the foothills of Golden Grove, you'll certainly feel a part of nature living here. Only a few minutes-walk to nearby 'Stables Shopping Centre', Woolworths, Childcare Centre and GP clinic along with public transport for those commuting via bus to Adelaide. Parks and bush walks are in abundance, with many walking trails available to be explored and enjoyed within the area.

Enquire today.

All information provided has been obtained from sources we believe to be accurate, however, we cannot guarantee the information is accurate and we accept no liability for any errors or omissions (including but not limited to a property's land size, floor plans and size, building age and condition). Interested parties should make their own enquiries and obtain their own legal and financial advice. Should this property be scheduled for auction, the Vendor's Statement may be inspected at either of our two LJ Hooker Property Specialists Real Estate offices for 3 consecutive business days immediately preceding the auction and at the auction for 30 minutes before it starts.

RLA 208516



Disclaimer: All information contained therein is gathered from relevant third parties sources. We cannot guarantee or give any warranty about the information provided. Interested parties must rely solely on their own enquiries.

**LJ Hooker Greenwith | Golden Grove
| Mawson Lakes | Modbury
(08) 8289 6660**

More About this Property

Property ID	2B81GJU
Property Type	House
House Size	301 m2
Land Area	660 m2
Including	Air Conditioning Ducted Cooling Ducted Heating Dishwasher Outdoor Entertaining Secure Parking Fully Fenced Remote Garage Solar Panels

Shaun Roberts 0435 367 534

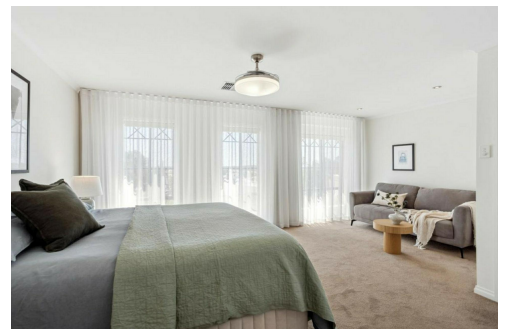
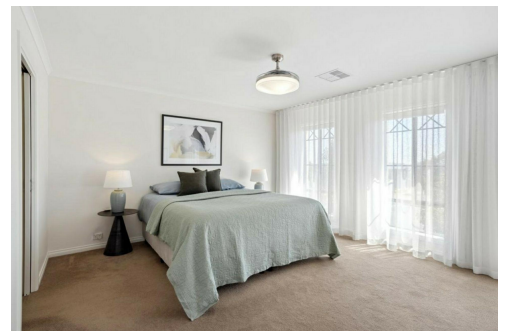
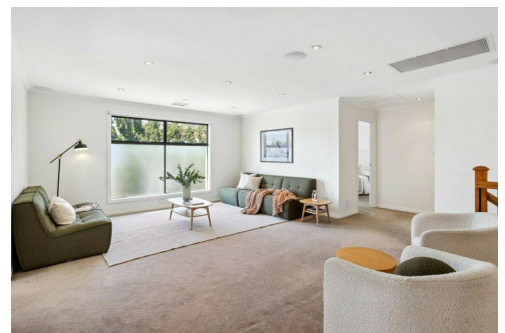
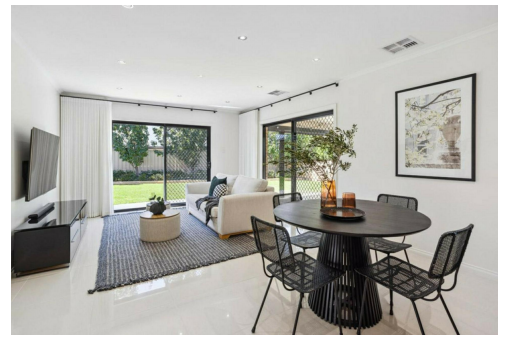
Managing Partner | Sales Specialist | shaunr@ljhsales.com.au

Craig Ricciuto 0417 806 329

Managing Partner | Sales Specialist | craigr@ljhsales.com.au

LJ Hooker Greenwith | Golden Grove | Mawson Lakes | Modbury (08) 8289 6660

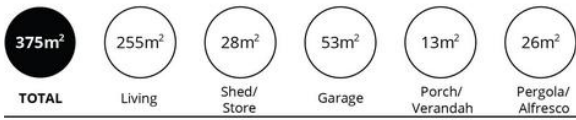
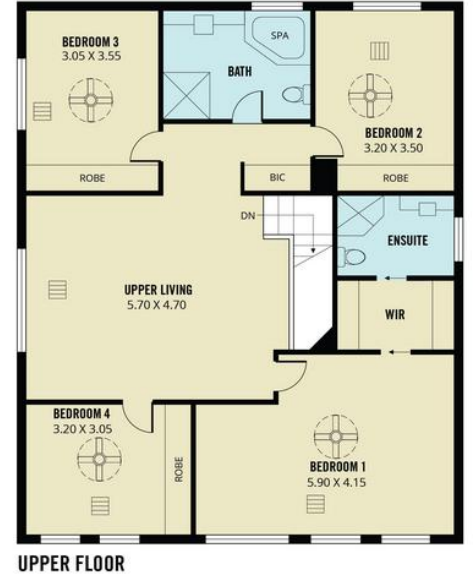
North East, Shop 2, 1007 North East Road, RIDGEHAVEN SA 5097
greenwithgoldengrove.ljhooker.com.au | info@ljhsupport.com.au



Disclaimer: All information contained therein is gathered from relevant third parties sources.

We cannot guarantee or give any warranty about the information provided. Interested parties must rely solely on their own enquiries.

**LJ Hooker Greenwith | Golden Grove
| Mawson Lakes | Modbury
(08) 8289 6660**



Scale in metres. This drawing is for illustration purposes only. All measurements are approximate and details intended to be relied upon should be independently verified.

Produced by The Fotobase Group