

Golden Grove, 4 Everglade Court

As good as it gets!

*** At the vendors request the open time for Saturday 27th April 2024 has been cancelled, we apologize for any inconvenience ***

Situated on a whopping 2,146m² (approx.) of land is this luxurious 6-bedroom family residence delivering the ultimate in entertaining and enjoyment. The home's main living areas, dining room and chef's kitchen all look onto the central entertaining area with a built-in kitchen/ BBQ and provides a resort-like lifestyle for family and friends. With a large heated swimming pool, spa, sauna and outdoor bathroom, along with space to soak up the sun on sunbeds poolside, while children play basketball on the tennis court. For car enthusiasts, there's a 7-car garage, with provision for 4 vehicles under roof along with a 3-car garage adjacent with height for a car hoist if you desire.

Features include:

* 5 bedrooms plus a Home Gym



Disclaimer: All information contained therein is gathered from relevant third parties sources. We cannot guarantee or give any warranty about the information provided. Interested parties must rely solely on their own enquiries.



For Sale
Please Call

View
ljhooker.com.au/2A6EGJU

Contact
Shaun Roberts
0435 367 534
shaunr@ljhsales.com.au

Craig Ricciuto
0417 806 329
craigr@ljhsales.com.au

**LJ Hooker Greenwith | Golden Grove
| Mawson Lakes | Modbury
(08) 8289 6660**

- * Master bedroom with spacious walk-in robe and ensuite bathroom
- * Bedrooms three and four also with ensuite bathrooms and built-in robes
- * Main bathroom downstairs with freestanding bath and shower
- * Home office with custom cabinetry
- * Gaming room or sitting room on entry to the home
- * Home gym/exercise room
- * Formal lounge with feature fireplace and plantation shutters
- * Spacious family and meals area with glass windows overlooking the pool
- * Chef's kitchen with stone island benchtop, ILVE 1500mm oven with rotisserie, teppanyaki plate and grill, second oven/microwave, built-in coffee machine, dishwasher and walk-in pantry
- * Second formal dining with family room
- * Iron spiral staircase leads to upstairs retreat and bedrooms
- * Home alarm with 8 security cameras
- * 4 car garage with additional 3 car garage adjacent
- * 28kW Solar panel system saving \$\$ on electricity bills
- * Gated front yard with auto main entry gate and driveway gates
- * Landscaped gardens
- * Tennis court under lights

A dream home in a dream location, offering privacy thanks to its secluded location adjacent to bushlands and a nature reserve. Just moments to quality schools in the area and The Grove Shopping Centre only adding to convenience. A home leaves a lasting impression around every corner, built to the highest of quality and sure to provide endless moments of enjoyment for your family!

Don't let this opportunity pass you by, enquire today.

All information provided has been obtained from sources we believe to be accurate, however, we cannot guarantee the information is accurate and we accept no liability for any errors or omissions (including but not limited to a property's land size, floor plans and size, building age and condition). Interested parties should make their own enquiries and obtain their own legal and financial advice. Should this property be scheduled for auction, the Vendor's Statement may be inspected at either of our two LJ Hooker Property Specialists Real Estate offices for 3 consecutive business days immediately preceding the auction and at the auction for 30 minutes before it starts.

RLA 208516



**LJ Hooker Greenwith | Golden Grove
| Mawson Lakes | Modbury
(08) 8289 6660**

Disclaimer: All information contained therein is gathered from relevant third parties sources. We cannot guarantee or give any warranty about the information provided. Interested parties must rely solely on their own enquiries.

More About this Property

Property ID	2A6EGJU
Property Type	House
House Size	582 m ²
Land Area	2146 m ²
Including	Study Air Conditioning Ducted Cooling Ducted Heating Alarm Pool Fire Place Dishwasher Outdoor Entertaining Built-in-Robes Secure Parking Fully Fenced Remote Garage Solar Panels

Shaun Roberts 0435 367 534

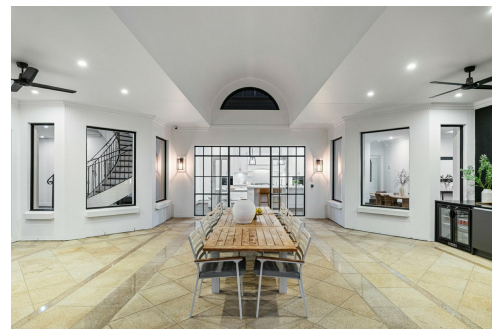
Managing Partner | Sales Specialist | shaunr@ljhsales.com.au

Craig Ricciuto 0417 806 329

Managing Partner | Sales Specialist | craigr@ljhsales.com.au

LJ Hooker Greenwith | Golden Grove | Mawson Lakes | Modbury (08) 8289 6660

North East, Shop 2, 1007 North East Road, RIDGEHAVEN SA 5097
greenwithgoldengrove.ljhooker.com.au | info@ljhsupport.com.au



Disclaimer: All information contained therein is gathered from relevant third parties sources.

We cannot guarantee or give any warranty about the information provided. Interested parties must rely solely on their own enquiries.

**LJ Hooker Greenwith | Golden Grove
| Mawson Lakes | Modbury
(08) 8289 6660**



*Drawing for illustration purposes only. Scale in metres.
 4 EVERGLADE COURT, GOLDEN GROVE.

Produced by
Oaktree
 STUDIOS