

Golden Grove, 18 Chatswood Grove

The One You've Been Waiting For!

It is our pleasure to present this charming home to the market. Originally constructed in 1998, it is located in one of the most desirable pockets of Golden Grove, where everything you'll ever need is only a moment away.

Situated on a manageable Torrens titled allotment of approximately 255 sqm, this home encapsulates low-maintenance living and is sure to impress, no matter your situation!

Features you'll love:

- * Three spacious bedrooms, the master with a walk-in robe
- * Ceiling fan in the master bedroom
- * Two-way access bathroom with a separate toilet
- * Split system heating and cooling in the main living area, ideal for year-round



Disclaimer: All information contained therein is gathered from relevant third parties sources. We cannot guarantee or give any warranty about the information provided. Interested parties must rely solely on their own enquiries.



For Sale

\$540,000 - \$590,000

View

ljhooker.com.au/29HZGJU

Contact

Ryan Graham

0400 912 287

ryang@ljhsales.com.au

Craig Ricciuto

0417 806 329

craigr@ljhsales.com.au

LJ Hooker Greenwith | Golden Grove | Mawson Lakes | Modbury
(08) 8289 6660

comfort

- * Large kitchen with ample storage, a breakfast bar, gas cooktop, and oven
- * Flexible floor plan with multiple living areas
- * Easy-care floorboards throughout the main living areas
- * Garden shed with power
- * Paved entertainment area with a pitched roof verandah, ideal for entertaining or enjoying the afternoon sunshine
- * Low-maintenance gardens in both the front and rear
- * Ample off-street parking with a single carport and automatic roller door with drive-through access
- * Alarm system installed

Set in a location with so much to love, whether it's spending time with the family at one of the many nearby parks/reserves, including the popular Golden Fields Reserve, or perhaps your time could be spent exploring the many walking trails at the gorgeous Cobbler Creek. There are a number of public and private schools, including several early learning centres, within close proximity.

All of this, and you will love the added convenience of having the Grove Shopping Centre and public transport options just a stone's throw away!

A home with so much to offer simply won't last.

Register your interest with Ryan Graham today!

All information provided has been obtained from sources we believe to be accurate, however, we cannot guarantee the information is accurate and we accept no liability for any errors or omissions (including but not limited to a property's land size, floor plans and size, building age and condition). Interested parties should make their own enquiries and obtain their own legal and financial advice. Should this property be scheduled for auction, the Vendor's Statement may be inspected at either of our two LJ Hooker Property Specialists Real Estate offices for 3 consecutive business days immediately preceding the auction and at the auction for 30 minutes before it starts. RLA 208516



Disclaimer: All information contained therein is gathered from relevant third parties sources. We cannot guarantee or give any warranty about the information provided. Interested parties must rely solely on their own enquiries.

**LJ Hooker Greenwith | Golden
Grove | Mawson Lakes | Modbury
(08) 8289 6660**

More About this Property

| | |
|---------------|--|
| Property ID | 29HZGJU |
| Property Type | House |
| House Size | 118 m² |
| Land Area | 255 m² |
| Including | Air Conditioning Dishwasher Outdoor Entertaining Built-in-Robes Secure Parking |

Ryan Graham 0400 912 287

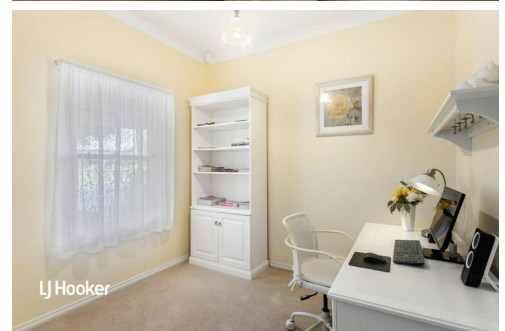
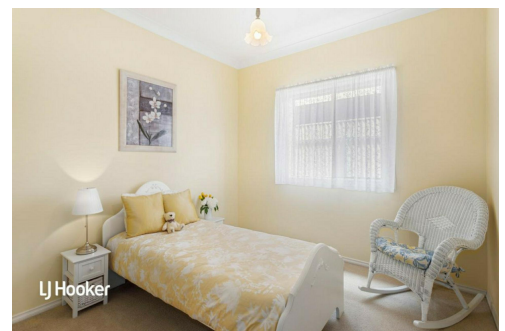
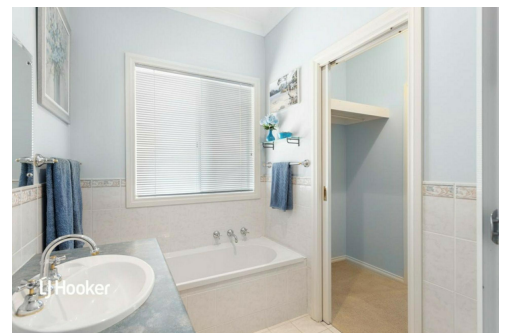
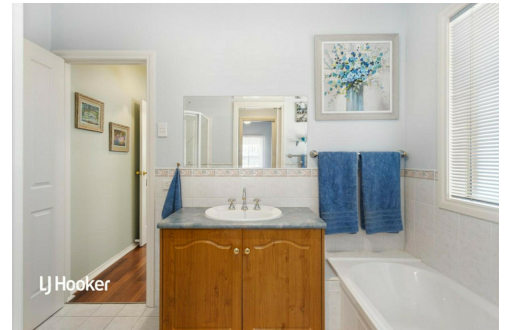
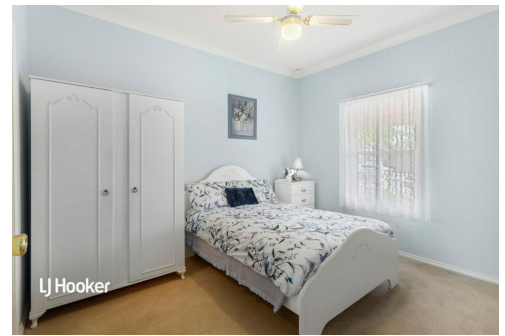
Sales Specialist | ryang@ljhsales.com.au

Craig Ricciuto 0417 806 329

Managing Partner | Sales Specialist | craig@ljhsales.com.au

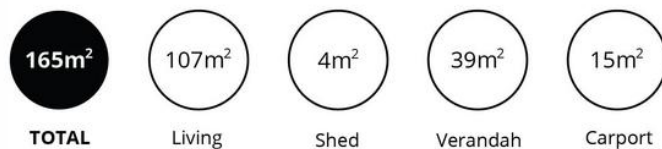
LJ Hooker Greenwith | Golden Grove | Mawson Lakes | Modbury (08) 8289 6660

North East, Shop 2, 1007 North East Road, RIDGEHAVEN SA 5097
greenwithgoldengrove.ljhooker.com.au | info@ljhsupport.com.au



Disclaimer: All information contained therein is gathered from relevant third parties sources. We cannot guarantee or give any warranty about the information provided. Interested parties must rely solely on their own enquiries.

LJ Hooker Greenwith | Golden Grove | Mawson Lakes | Modbury (08) 8289 6660



Scale in metres. This drawing is for illustration purposes only. All measurements are approximate and details intended to be relied upon should be independently verified.

Produced by The Fotobase Group