



## Glenwood, 6 Pukatea Street

One Out of the Box Here

Buying under \$500,000 bang for your buck here! Classic Summerhill stone, well maintained, double-glazed, with a large conservatory to furnish for relaxing. Newer log fire plus heat pump in the large lounge area. Lovely kitchen area with Smeg appliances. Good double bedrooms with plenty of storage. It is a fabulous home if you are downsizing for easy care, plus a garden still big enough for pottering but not one that dictates your time!

This is it, garage and off-street parking. A garden shed and well fenced. Very good location, close to amenities.

Brilliant stand alone home for first home or the perfect lock and leave, there is room for the camper!

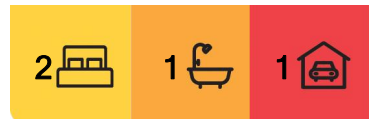
Viewing is essential here as it will tick those boxes.

Disclaimer:



**Disclaimer:** All information contained therein is gathered from relevant third parties sources. We cannot guarantee or give any warranty about the information provided. Interested parties must rely solely on their own enquiries.

**SOLD**



**For Sale**  
Enquiries Over \$485,000

**View**  
[ljhooker.co.nz/150VGTA](http://ljhooker.co.nz/150VGTA)

**Contact**  
**Andrea Clegg**  
021 115 6403  
[andrea.timaru@ljhooker.co.nz](mailto:andrea.timaru@ljhooker.co.nz)

**LJ Hooker Timaru**  
**(03) 688 3029**  
Enting Real Estate Limited

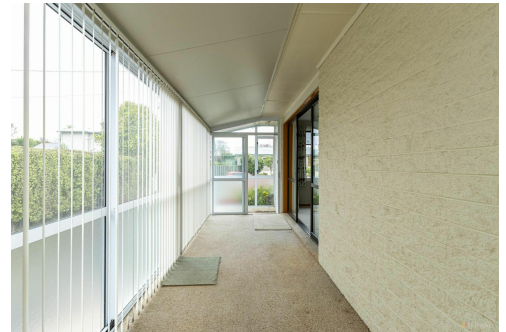
This information has been supplied by the owners and Corelogic. LJ Hooker Timaru, Geraldine and Waimate are merely passing over this information as supplied to us. We cannot guarantee its accuracy and reliability as we have not checked, audited or reviewed the information. All intending purchasers are advised to conduct their own due diligence investigation into this information. To the maximum extent permitted by law, we do not accept any responsibility to any part for the accuracy or use of the information herein. Enting Real Estate Limited Licensed (REAA 2008).

## More About this Property

<b>Property ID</b>	150VGTA
<b>Property Type</b>	House
<b>House Size</b>	130 m <sup>2</sup>
<b>Land Area</b>	521 m <sup>2</sup>
<b>Licensed Real Estate Agents (REAA2008)</b>	

**Andrea Clegg 021 115 6403**  
Property Consultant | [andrea.timaru@ljhooker.co.nz](mailto:andrea.timaru@ljhooker.co.nz)

**LJ Hooker Timaru (03) 688 3029**  
Enting Real Estate Limited  
51 Church Street, TIMARU 7910  
[timaru.ljhooker.co.nz](http://timaru.ljhooker.co.nz) | [timaru@ljhooker.co.nz](mailto:timaru@ljhooker.co.nz)



**Disclaimer:** All information contained therein is gathered from relevant third parties sources. We cannot guarantee or give any warranty about the information provided. Interested parties must rely solely on their own enquiries.

**LJ Hooker Timaru**  
**(03) 688 3029**  
Enting Real Estate Limited