



Glenorchy, 42 Grove Road

Central, convenient and oh so comfortable!

Welcome to Your Family's New Home in Glenorchy!

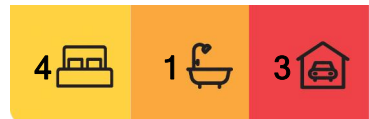
Are you ready to find the perfect place for your family to grow and create lasting memories? Look no further! This charming property in the heart of Glenorchy is waiting for you to make it your own. Let's take a closer look at what makes this home so special:

Property Highlights:

- Spacious 4 Bedrooms: Plenty of room for everyone! Whether it's for the kids, guests, or a home office, you'll have all the space you need.
- 1 Central Family Bathroom: Designed for convenience, this bathroom is perfect for busy mornings and relaxing evenings.
- Generous Land Area: With a sizeable 865 sqm, The garden is a sunny haven and there's ample outdoor space for the kids to play, pets to roam, or even for you to have that vegie garden you've always dreamed of!



Disclaimer: All information contained therein is gathered from relevant third parties sources. We cannot guarantee or give any warranty about the information provided. Interested parties must rely solely on their own enquiries.



For Sale
Please Call

View
ljhooker.com.au/

Contact
Alison Rogers
0409 220 211
arogers@ljhpinnacle.com.au

LJ Hooker Pinnacle Property
(03) 6272 8177

- Studio in the garden: perfect for a teenager's retreat, home office, or parents' escape.
- Large sheds for plenty of storage.
- Family orientated neighbourhood: Glenorchy is known for its convenience and inclusivity. Enjoy nearby parks, schools, and local shops, including Northgate Shopping Centre a few minutes walk away, that makes life easy and fun for families.

Why You'll Love Living Here:

- Room to Grow: Whether you're a growing family or looking to settle down, this home has the space you need to thrive.
- Outdoor Adventures Await: Imagine weekend barbecues in your backyard, family picnics at the park, or simply enjoying the fresh air in your own private oasis.
- Convenient Location: Close to a choice of schools, public transport with frequent Metro services, and all the amenities you could need, making daily life a breeze.
- Walking distance to the Derwent River foreshore and the Entertainment Centre, currently known as MyState Bank Arena, home of the NBL Tasmania JackJumpers and many events throughout the year.
- The renowned MONA, Cadburys Chocolate Factory and a Multipurpose Sports Centre earmarked at Claremont College are a short distance away
- A newly renovated Swimming Centre will be a quick walking distance if the local council's plans for the Glenorchy Pool are completed.

This home is more than just a property; it's a place where memories will be made, laughter will echo, and love will flourish. Don't miss out on the chance to make it yours!

Are you ready to take the next step? Contact us today to schedule a viewing and see for yourself why this Glenorchy gem is the perfect fit for your family!

Let's make your dream home a reality!

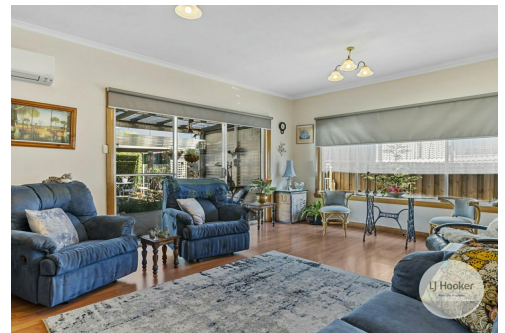
The information contained herein has been supplied to us and we have no reason to doubt its accuracy, however, cannot guarantee it. Accordingly, all interested parties should make their own enquiries to verify this information.

More About this Property

Property Type	House
Land Area	865 m2
Including	Air Conditioning Toilets (1) Dishwasher Outdoor Entertaining Built-in-Robes Solar Panels

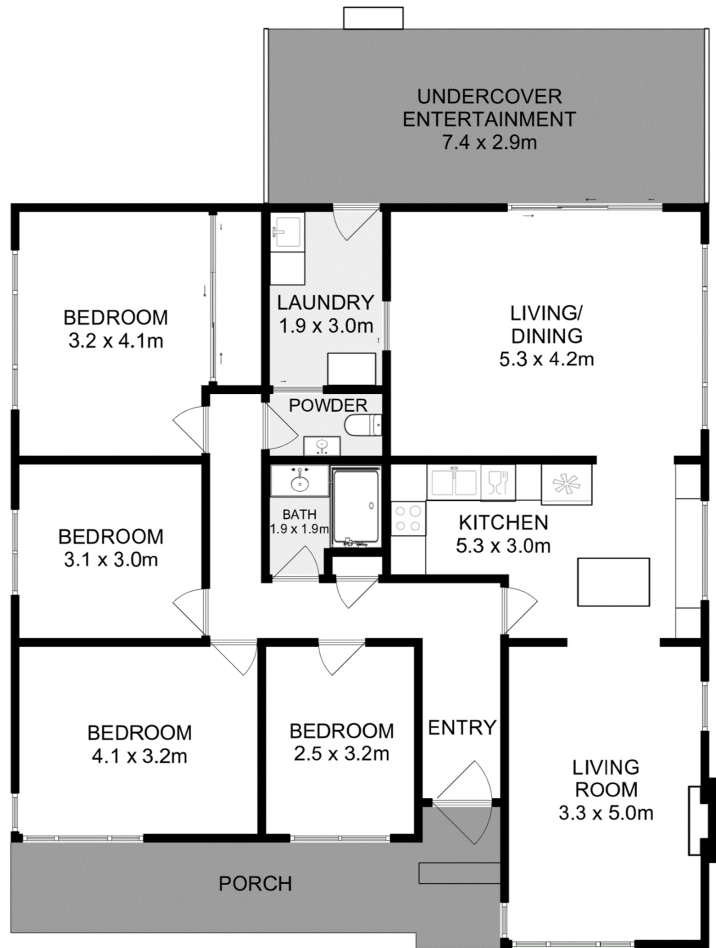
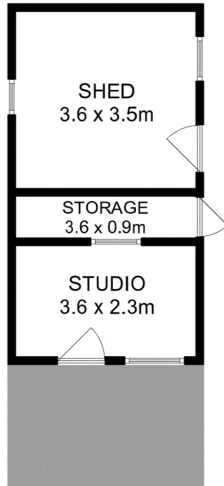
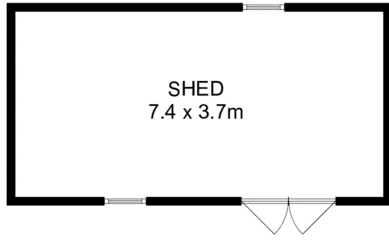
Alison Rogers 0409 220 211
Property Representative | arogers@ljhpinnacle.com.au

LJ Hooker Pinnacle Property (03) 6272 8177
402 Main Road, GLENORCHY TAS 7010
pinnacleproperty.ljhooker.com.au | hello@ljhookerpinnacle.com



LJ Hooker Pinnacle Property
(03) 6272 8177

Disclaimer: All information contained therein is gathered from relevant third parties sources. We cannot guarantee or give any warranty about the information provided. Interested parties must rely solely on their own enquiries.



Total Approx. House Area : 135 sqm
 Total Approx. Outbuilding Area : 41 sqm

All measurements are internal and approximate.
 This plan is a sketch for illustration, not valuation.
 Produced by Open²view.com