

11 Corvus Close, Glenmore Park

Immaculately prepared with nothing left to do, this home awaits its next owner!!!

This beautifully presented family home is perfectly positioned in a cul-de-sac, just moments from the natural beauty of Mulgoa Nature Reserve.

Designed for comfortable and practical living, the home offers a spacious lounge room filled with natural light, complemented by a stylishly renovated kitchen featuring a gas cooktop, dishwasher, and ample cupboard storage. The adjoining dining area creates a seamless space for everyday living and entertaining.

Three well-proportioned bedrooms, all complete with built-in wardrobes and ceiling fans. A split system air conditioner in the lounge ensures year-round comfort.

Recently freshly painted throughout, the home also features two bathrooms, with the main bathroom offering the added convenience of a separate toilet.

Additional highlights include a remote double lock-up garage with

3 2 2

FOR SALE
\$1,050,000 - \$1,100,000

VIEW
Sat 11th Apr @ 11:45AM - 12:15PM

AGENTS
Melissa Jerzyna
0414 373 347
mjerzyna.penrith@ljhooker.com.au

AGENCY
LJ Hooker Penrith
(02) 4732 2322

All information contained therein is gathered from relevant third parties sources.
We cannot guarantee or give any warranty about the information provided.
Interested parties must rely solely on their own enquiries.

LJ Hooker

internal access and a functional internal laundry.

Step outside to enjoy an undercover entertaining area overlooking a low-maintenance, grassed backyard, ideal for relaxed family living.

This home offers everything you need and more.

MORE DETAILS

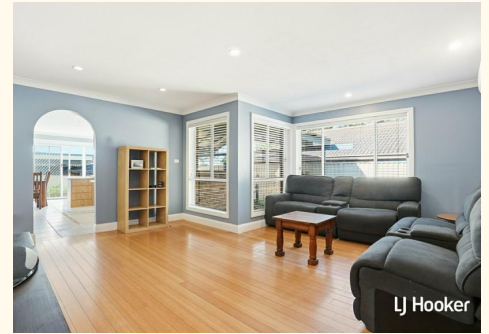
Property ID	1R10F70
Property Type	House
Including	Ensuite
	Air Conditioning
	Dishwasher
	Outdoor Entertaining
	Built-in-Robes
	Fully Fenced

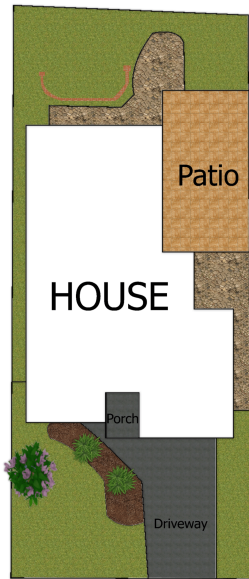
Melissa Jerzyna 0414 373 347

Director of Property Management | mjerzyna.penrith@ljhooker.com.au

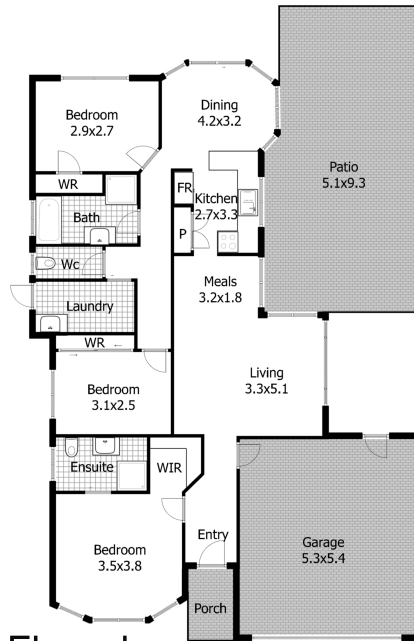
LJ Hooker Penrith (02) 4732 2322

2/314 High Street, PENRITH NSW 2750
penrith.ljhooker.com.au | penrith@ljhooker.com.au





Siteplan



Floorplan

DISCLAIMER:

This floor plan is used for marketing purpose only and is subject to errors and inaccuracy. The marketing Agent will not accept any liability Interested parties should make and rely on their own enquiries



11 Corvus Cl,
Glenmore Park