

Gleniti, 50 Spring Road

Sleek, Stylish and Standout

This home is truly more than meets the eye - experience comfort, convenience, and contemporary living at its best!

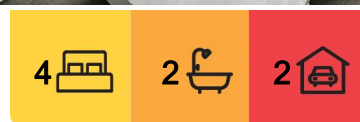
Featuring a sleek modern kitchen with elegant rose gold accents, this property is designed for those who love to cook and entertain. The spacious layout offers four double bedrooms, a convenient study nook, and two well-appointed bathrooms, including a separate toilet for added practicality.

Step outside to a fantastic outdoor entertaining area, ideal for hosting gatherings or enjoying quiet evenings. With plenty of storage throughout, garaging, and heaps of off-street parking. Discover the perfect blend of style and functionality in this stunning family home!

Features:



Disclaimer: All information contained therein is gathered from relevant third parties sources. We cannot guarantee or give any warranty about the information provided. Interested parties must rely solely on their own enquiries.



For Sale

Enquiries Over \$789,000

View

l.jhooker.co.nz/15BHGTA

Contact

Ben Groundwater

027 415 6405

ben.timaru@l.jhooker.co.nz

Joelle Snook

027 844 5432

joelle.timaru@l.jhooker.co.nz

LJ Hooker Timaru

(03) 688 3029

Enting Real Estate Limited

- Four double bedrooms
- Electric hot water
- Two separate toilets
- Wood burner and 2 heat pumps
- Double garaging
- Fully fenced

Disclaimer:

This information has been supplied by the owners and Corelogic. LJ Hooker Timaru, Geraldine and Waimate are merely passing over this information as supplied to us. We cannot guarantee its accuracy and reliability as we have not checked, audited or reviewed the information. All intending purchasers are advised to conduct their own due diligence investigation into this information. To the maximum extent permitted by law, we do not accept any responsibility to any part for the accuracy or use of the information herein. Enting Real Estate Limited Licensed (REAA 2008).

More About this Property

Property ID	15BHGTA
Property Type	House
House Size	170 m2
Land Area	724 m2
Licensed Real Estate Agents (REAA2008)	

Ben Groundwater 027 415 6405

Property Consultant | ben.timaru@ljhooker.co.nz

Joelle Snook 027 844 5432

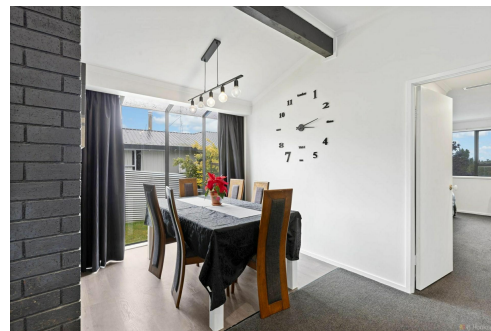
Property Consultant | joelle.timaru@ljhooker.co.nz

LJ Hooker Timaru (03) 688 3029

Enting Real Estate Limited

51 Church Street, TIMARU 7910

timaru.ljhooker.co.nz | timaru@ljhooker.co.nz



Disclaimer: All information contained therein is gathered from relevant third parties sources. We cannot guarantee or give any warranty about the information provided. Interested parties must rely solely on their own enquiries.

LJ Hooker Timaru
(03) 688 3029
Enting Real Estate Limited



The Floorplan Provided Is For Illustrative Purposes Only And Is Not 100% To Scale. Dimensions And Layouts Are Approximate