

Glenelg South, 16 Bath Street

Coastal Charm with Modern Sophistication

Immersed in the charming area of Glenelg South, this captivating residence beautifully merges the tranquility of seaside living with a classic allure that never fades. Situated just moments from the pristine sands of Glenelg Beach, this home is perfectly positioned to enjoy the convenience of local shopping at Glenelg South Shopping Centre, indulgence in the delights of Romeo's Foodland and Dulwich Bakery, and the essential services of the nearby Post Office.

Step inside this charming maisonette to find a spacious, open-plan living and dining area that invites relaxation and companionship, complemented by two generously-sized bedrooms equipped with abundant storage options, and a contemporary bathroom dressed in elegant floor-to-ceiling tiles. The addition of a discreet laundry space and a private outdoor area dedicated to entertainment and leisure underscores the home's appeal, crafting the ultimate coastal living experience.

2 1 1

For Sale
\$905,000

View
ljhooker.com.au/H7RH67

Contact
Jordan Prole
0434 828 333
jordan@ljhfp.com.au

Gerard Pacillo
0431 596 145
gerard@ljhfp.com.au



Disclaimer: All information contained therein is gathered from relevant third parties sources. We cannot guarantee or give any warranty about the information provided. Interested parties must rely solely on their own enquiries.

LJ Hooker Flinders Park
(08) 8352 1155

The residence is flooded with natural light, courtesy of a substantial glass panel window at the rear, enhancing the warmth and welcoming ambiance within. Whether you're seeking a savvy investment, looking to downsize without compromise, buying for the first time, or in search of a family home, this property stands as a unique opportunity to own a piece of paradise by the beach.

Property Highlights:

- *Two spacious bedrooms, each with built-in wardrobes for optimal organisation.
- *A broad, open-concept living and dining area perfect for modern lifestyles.
- *A well-designed kitchen featuring contemporary cabinetry and extensive storage solutions.
- *A beautifully maintained bathroom with a chic single vanity and comprehensive floor-to-ceiling tiling.
- *A separate laundry area enhancing functionality.
- *An additional standalone toilet for guest convenience.
- *A secluded alfresco area, creating a serene spot for relaxation and social gatherings.
- *Secure off-street parking complemented by a rear carport.
- *Exceptional location near shops, cafes, parks, and easy public transport links for effortless travel to Adelaide's CBD and beyond.

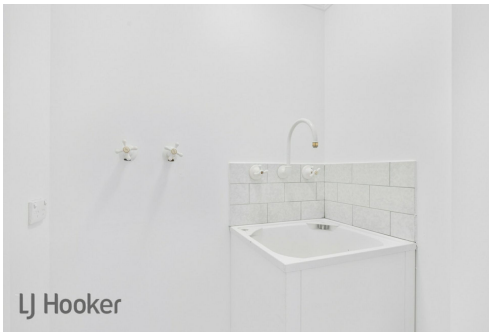
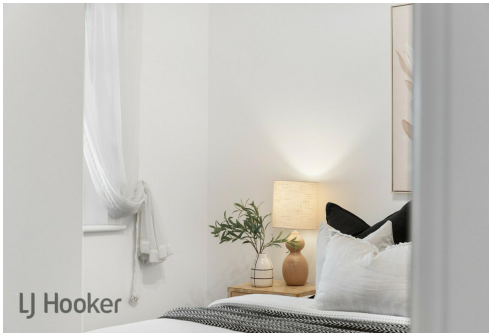
Merely 500 meters from the soft sands of Glenelg South Beach and within a pleasant walk to the vibrant Jetty Road precinct, this home not only promises a serene beachside lifestyle but also places you at the heart of convenience and leisure. The neighborhood is adorned with charming boutiques, cafes, schools, and parks, all contributing to the vibrant community atmosphere. With hassle-free access to public transport, navigating to Adelaide's city center and exploring surrounding amenities become an easy part of daily life. This gem offers an unparalleled blend of lifestyle and location, making it a must-see for those dreaming of a beachside haven.

More About this Property

Property ID	H7RH67
Property Type	House
Including	Toilets (1)

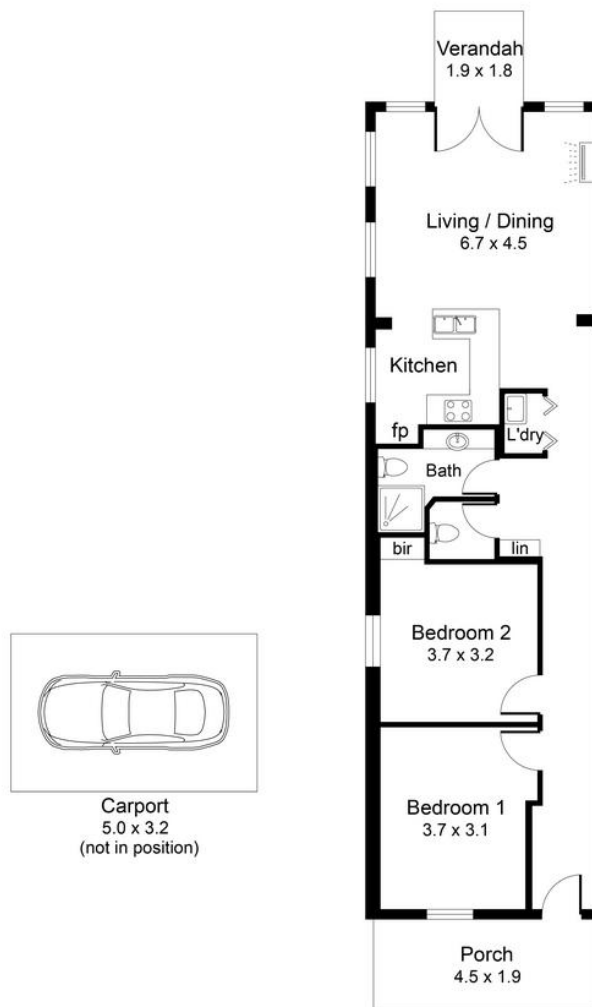
Jordan Prole 0434 828 333
Property Consultant | jordan@ljhfp.com.au
Gerard Pacillo 0431 596 145
Property Consultant | gerard@ljhfp.com.au

LJ Hooker Flinders Park (08) 8352 1155
240 Grange Road, FLINDERS PARK SA 5025
flinderspark.ljhooker.com.au | flinderspark@ljhfp.com.au



Disclaimer: All information contained therein is gathered from relevant third parties sources. We cannot guarantee or give any warranty about the information provided. Interested parties must rely solely on their own enquiries.

LJ Hooker Flinders Park
(08) 8352 1155



107m ²	80m ²	16m ²	3m ²	8m ²
TOTAL	Living	Carport	Verandah	Porch

Whilst every attempt has been made to ensure the accuracy of the floor plan contained here, measurements of doors, windows, rooms and any other items are approximate and no responsibility is taken for any error, omission, or misstatement. This plan is for illustrative purposes only and should be used as such by any prospective purchaser.

