

Glenelg, 1/6 Saltram Road

Seaside Living Awaits

Step into the vibrant heart of Glenelg and discover this beautifully updated two-bedroom unit. Offering the perfect blend of style, comfort, and coastal living.

Recently given a fresh and modern makeover, this charming residence has been freshly painted throughout and showcases brand new flooring and a contemporary colour palette, making it completely move-in ready for its new owner.

The spacious master bedroom offers direct access to the bathroom, providing a semi-ensuite experience that enhances both convenience and privacy.

Whether you're a first home buyer looking to enter the market, a downsizer seeking low-maintenance living, or a savvy investor wanting to secure a prime Glenelg address, this property ticks all the boxes.

2 1 1

For Sale

\$600,000 - \$640,000

View

ljhooker.com.au/2BMYGJU

Contact

Donna Staines

0456 844 103

donnas@ljhsales.com.au

Michael Fenn

0405 157 840

michaelf@ljhsales.com.au



Disclaimer: All information contained therein is gathered from relevant third parties sources.

We cannot guarantee or give any warranty about the information provided. Interested parties must rely solely on their own enquiries.

**LJ Hooker Greenwith | Golden Grove
| Mawson Lakes | Modbury
(08) 8289 6660**

Features you'll love:

- * Two well-proportioned bedrooms, master with direct bathroom access
- * Light-filled lounge room offering comfort
- * Split system heating and cooling for year-round climate control
- * Electric stove and oven
- * Stylish vinyl plank flooring to the entrance, kitchen, and open-plan dining/lounge
- * Freshly laid carpet in both bedrooms for added comfort

Just 200 metres (approx.) from the shoreline, let the beach lifestyle take centre stage in your everyday life. Morning walks along the sand, sunset swims and the vibrant jetty road precinct are right at your doorstep. Embrace a lifestyle where the refreshing sea breeze, coastal cafes and relaxed atmosphere become part of your daily routine!

All information provided has been obtained from sources we believe to be accurate, however, we cannot guarantee the information is accurate and we accept no liability for any errors or omissions (including but not limited to a property's land size, floor plans and size, building age and condition). Interested parties should make their own enquiries and obtain their own legal and financial advice. Should this property be scheduled for auction, the Vendor's Statement may be inspected at either of our two LJ Hooker Property Specialists Real Estate offices for 3 consecutive business days immediately preceding the auction and at the auction for 30 minutes before it starts.

RLA 208516

More About this Property

Property ID	2BMYGJU
Property Type	Unit
House Size	72 m2
Including	Air Conditioning Built-in-Robes Secure Parking

Donna Staines 0456 844 103

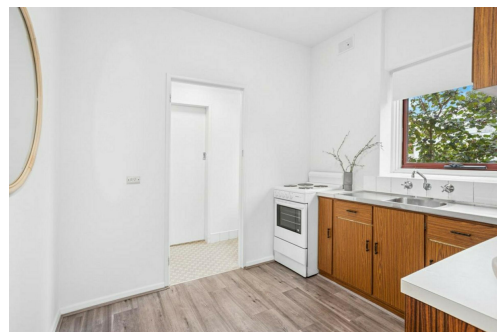
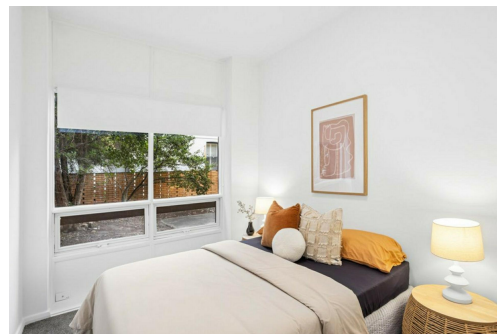
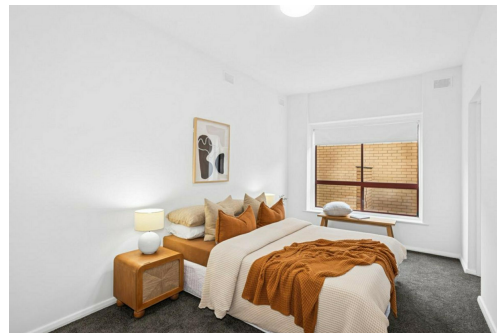
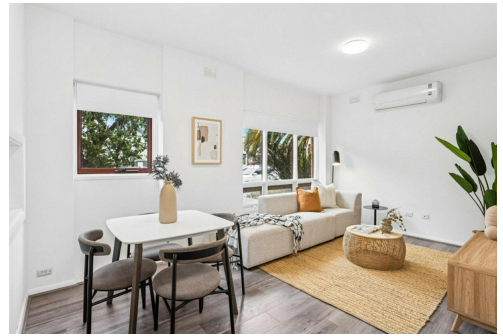
Sales Specialist | donnas@ljhsales.com.au

Michael Fenn 0405 157 840

Managing Director | Auctioneer | michaelf@ljhsales.com.au

LJ Hooker Greenwith | Golden Grove | Mawson Lakes | Modbury (08) 8289 6660

North East, Shop 2, 1007 North East Road, RIDGEHAVEN SA 5097
greenwithgoldengrove.ljhooker.com.au | info@ljhsupport.com.au



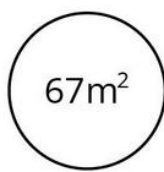
Disclaimer: All information contained therein is gathered from relevant third parties sources. We cannot guarantee or give any warranty about the information provided. Interested parties must rely solely on their own enquiries.

**LJ Hooker Greenwith | Golden Grove
| Mawson Lakes | Modbury
(08) 8289 6660**



67m²

TOTAL



67m²

Living

Scale in metres. This drawing is for illustration purposes only. All measurements are approximate and details intended to be relied upon should be independently verified.

Produced by **The Fotobase Group**