

Gleneagle, 5 Maher Place

Brand New and NDIS approved Dwelling

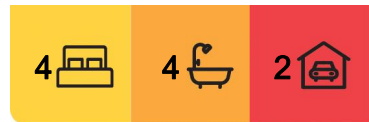
This brand-new 4-bedroom, 4-bathroom house in Glenageale is a Rare find. Perfect for first home buyers having never been lived it would qualify for \$30k first home owner grant but without the waiting time to build. Or for the savvy investor it also has been built and certified for NDIS Robust living.

- *220m2 house on 450m block
- *4 bedrooms with ensuites
- *2 living areas
- *5 Air conditioners
- *6.6kw Solar
- *Rental Appraisal \$670 per week

Gleneagle is known for its tranquil atmosphere and close-knit community vibe. You'll find yourself within easy reach of local parks, ideal for weekend picnics and outdoor activities.



Disclaimer: All information contained therein is gathered from relevant third parties sources. We cannot guarantee or give any warranty about the information provided. Interested parties must rely solely on their own enquiries.



For Sale
Contact Agent

View
ljhooker.com.au/1YVPHGS

Contact
Christie Smith
0419 684 184
csmith@ljhcomplete.com.au

LJ Hooker Property Complete
1300 360 388

The suburb also boasts excellent educational facilities, including Gleneagle State School, making school runs a breeze. Additionally, convenient access to nearby shopping centres and essential services ensures that all your daily needs are met without hassle.

This property provides not only comfort but also convenience with its dual garage. With its affordable price point, it presents an exceptional opportunity to own a Robust home in a growing area. Don't miss your chance to secure this fantastic property-contact us today to arrange a viewing!

Scenic Rise Estate is situated only a couple of minutes drive North from the centre of Beaudesert.

Buyers looking to invest and take advantage of the future infrastructure in nearby Bromelton would be buying in a great location at this estate.

Local Amenities and Travel Distance include but are not limited to:

- 55 minutes to Brisbane
- 1 hour to Gold Coast
- 7 minutes to Beaudesert Hospital
- 10 minutes to Bromelton
- 8 minutes to Beaudesert State School
- 6 minutes to Beaudesert High School
- 7 minutes to local shopping precinct including Woolworths, Coles, Chemists, Post Shop and multiple Fast Food Outlets
- 8 minutes to medical centre
- 8 minutes to Jubilee Park
- 10 minutes to Beaudesert Showground

Disclaimer:

Property images may have been digitally altered or staged for marketing purposes and may not constitute a complete representation of the property condition being purchased. Any photographs used by LJ Hooker may only show certain aspects of the property at the time the photographs are taken and any prospective buyer should inspect the property.

More About this Property

Property ID	1YVPHGS
Property Type	House
House Size	220 m ²
Land Area	450 m ²
Including	Air Conditioning Toilets (5) Dishwasher Built-in-Robes Fully Fenced

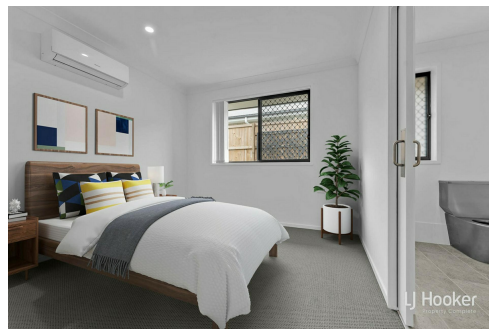
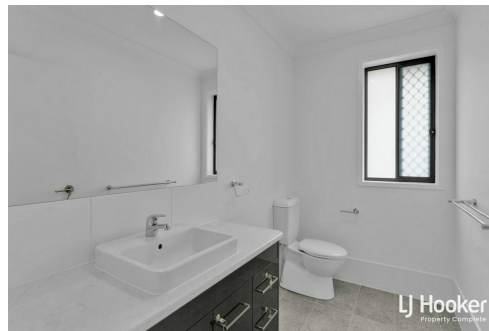
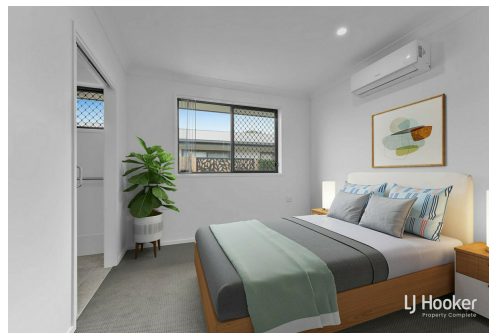
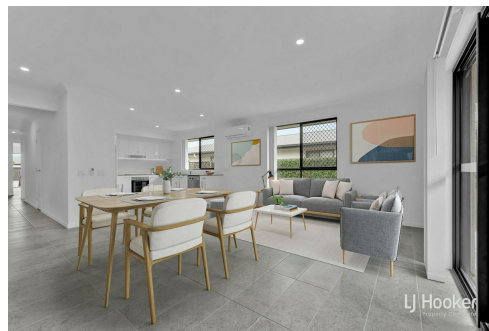
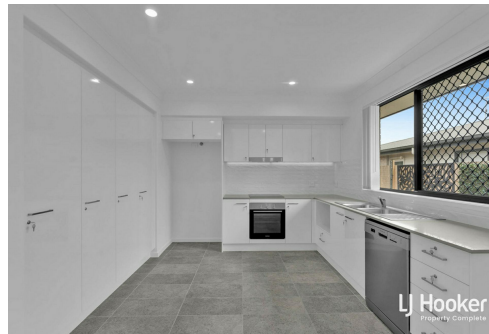
Christie Smith 0419 684 184

Principal & Licensee | csmith@ljhcomplete.com.au

LJ Hooker Property Complete 1300 360 388

Level 1, 32 Everglade Street, YARRABILBA QLD 4207

propertycomplete.ljhooker.com.au | admin@ljhcomplete.com.au



Disclaimer: All information contained therein is gathered from relevant third parties sources.

We cannot guarantee or give any warranty about the information provided. Interested parties must rely solely on their own enquiries.

LJ Hooker Property Complete
1300 360 388

