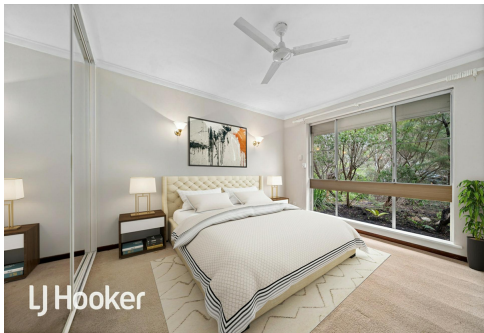


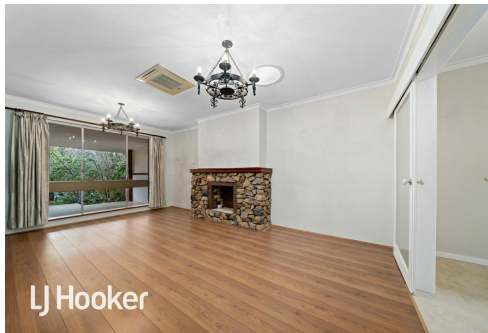


LJ Hooker

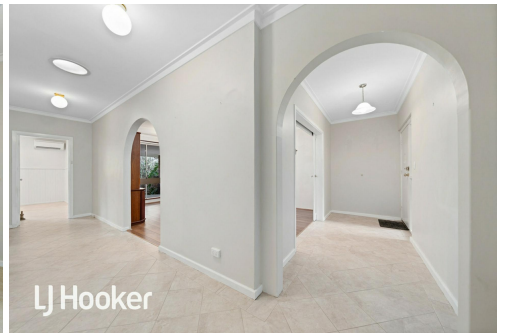
**SOLD**



LJ Hooker



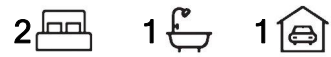
LJ Hooker



LJ Hooker

## Glen Forrest, 2/220 Great Eastern Highway

Charming Bushland Retreat with Urban Convenience.



Step inside this 2-bedroom, 1-bathroom duplex with wide spacious hallways and generously sized rooms. On a 2199 sqm (over half an acre) lot, this well-cared-for home boasts large rooms, high ceilings, a modern kitchen, bathroom and laundry, and an inviting alfresco area. Plenty of storage, stainless steel appliances including dishwasher, electric oven, gas cooktop and range hood. Two huge bedrooms complete with roller shutters & ceiling fans, the main with floor to ceiling double built in robe. There are 2 reverse cycle split system air conditioners throughout the home. The bathroom has a luxurious feel with larger than normal glass shower screen and lovely neutral modern tiles and vanity. The laundry keeps with the theme of luxury and space, with an abundance of storage. Through the alfresco and the rear gate is your own bushland at the rear of the block, providing a private natural oasis, or a perfect canvas for the green-thumbed. Located at the top of Greenmount hill gives quick access to Midland's amenities, along with community, sporting and local shopping options in Glen Forest and nearby Mundaring. Close to transport, local shops, cafe and medical centre, this property has a lot of appeal. This home has so much

**For Sale**  
UNDER OFFER

**View**  
[ljhooker.com.au/J2THRD](http://ljhooker.com.au/J2THRD)

**Contact**  
**Jeremy Bent**  
0415 217 592  
[jeremy.bent@ljhooker.com.au](mailto:jeremy.bent@ljhooker.com.au)



**LJ Hooker Joondalup**  
**(08) 9300 2100**

**Disclaimer:** All information contained therein is gathered from relevant third parties sources. We cannot guarantee or give any warranty about the information provided. Interested parties must rely solely on their own enquiries.

to offer, you won't believe it until you see it.

## More About this Property

<b>Property ID</b>	J2THRD
<b>Property Type</b>	DuplexSemi-detached
<b>Land Area</b>	2199 m <sup>2</sup>
<b>Including</b>	Toilets (1)

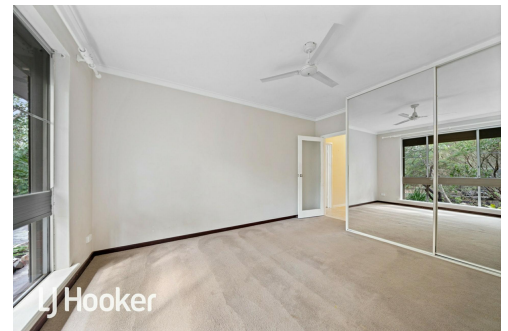
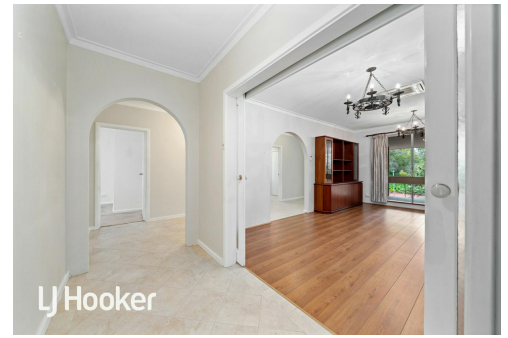
**Jeremy Bent 0415 217 592**

Sales Representative | [jeremy.bent@ljhooker.com.au](mailto:jeremy.bent@ljhooker.com.au)

**LJ Hooker Joondalup (08) 9300 2100**

4/25 Delage Street, JOONDALUP WA 6027

[joondalup.ljhooker.com.au](http://joondalup.ljhooker.com.au) | [admin.joondalup@ljhooker.com.au](mailto:admin.joondalup@ljhooker.com.au)



**LJ Hooker Joondalup  
(08) 9300 2100**

**Disclaimer:** All information contained therein is gathered from relevant third parties sources. We cannot guarantee or give any warranty about the information provided. Interested parties must rely solely on their own enquiries.