

6 Barwick Link, Gledswood Hills


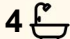

## Commanding Family Home, When Size Matters

This impressive home delivers an outstanding street presence and a lifestyle of comfort and convenience.

From the moment you step inside, you're welcomed by a grand foyer that flows seamlessly into formal and informal living areas.

Features:

- Multiple living areas
- 5 bedrooms with built in robes, 2 with ensuite
- 4 bathrooms with fully tiled floor to ceiling
- Expansive chefs kitchen with 2nd butlers kitchen
- Stone feature wall with gas fireplace
- Comfortable theatre room
- Extra large 2.5 car remote garage with internal access
- Undercover balcony with majestic views
- Large alfresco area great for entertainment
- Timber flooring throughout
- Downlights throughout
- Ducted air conditioning

5  4  2 

**FOR SALE**  
\$1,850,000 - \$1,950,000

### AGENTS

Doug Vukojcic  
0418 288 182  
doug.vukojcic@ljhooker.com.au

### AGENCY

LJ Hooker Edensor Park | Green Valley  
(02) 9823 8888

All information contained therein is gathered from relevant third parties sources.  
We cannot guarantee or give any warranty about the information provided.  
Interested parties must rely solely on their own enquiries.

 **LJ Hooker**

## MORE DETAILS

Property ID CRMHUC  
Property Type House  
Land Area 620 m2  
Including Ensuite

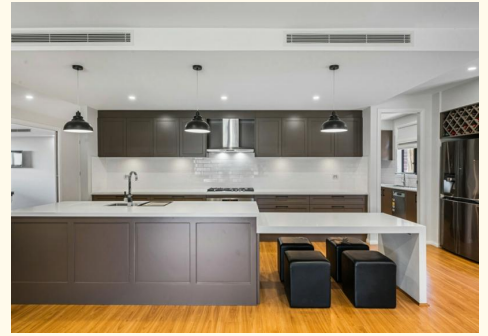
**Doug Vukojcic 0418 288 182**

Senior Sales Executive | [doug.vukojcic@ljhooker.com.au](mailto:doug.vukojcic@ljhooker.com.au)

**LJ Hooker Edensor Park | Green Valley (02) 9823 8888**

Shop 8, 207-215 Edensor Road, Edensor Park Plaza, EDENSOR  
PARK NSW 2176

[edensorpark.ljhooker.com.au](http://edensorpark.ljhooker.com.au) | [edensorpark@ljhooker.com.au](mailto:edensorpark@ljhooker.com.au)



All information contained therein is gathered from relevant third parties sources.  
We cannot guarantee or give any warranty about the information provided.  
Interested parties must rely solely on their own enquiries.



Ground Floor



First Floor



## 6 Barwick Link Gledswood Hills 2557

Scales in metres. Indicative only. Dimensions are approximate. All information contained here in is gathered from sources we believe to be reliable. However we cannot guarantee its accuracy and interested persons should rely on their own enquires.

