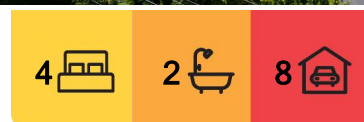


Glass House Mountains, 2038 Old Gympie Road

The Ultimate Lifestyle block and Equestrian Dream

Nestled in the heart of the Glass House Mountains, this exceptional acreage property offers the ultimate lifestyle for horse enthusiasts and those seeking privacy and space. With a professionally designed 40 x 40m horse arena, two stables, and a generous paddock, this property is perfectly equipped to accommodate your equestrian needs. Surrounded by natural beauty and boasting complete seclusion, it's a haven for both horses and humans alike.

The residence itself is perfectly positioned to take full advantage of the tranquil surroundings. A beautiful outdoor entertainment area provides a seamless blend of indoor and outdoor living, ideal for hosting family and friends or simply unwinding in peaceful solitude. Fully fenced for dogs, the property is designed with practicality and convenience in mind, offering a safe and secure environment for your entire family.



For Sale

Offers Over \$1,550,000

View

ljhooker.com.au/2MCHYX

Contact

Jack Cornford

0484 241 803

jack.cornford@ljhooker.com.au

Ethan Ross

0406 963 705

ethan.ross@ljhooker.com.au



Disclaimer: All information contained therein is gathered from relevant third parties sources. We cannot guarantee or give any warranty about the information provided. Interested parties must rely solely on their own enquiries.

LJ Hooker Caloundra | Aura
(07) 5318 7277

For those needing extra storage or workspace, the massive shed is a standout feature. With ample room for boats, caravans, and trucks, plus dual driveways for easy access, this property caters to a wide range of lifestyle requirements. Whether you're an equestrian enthusiast, a hobbyist, or just seeking a private retreat, 2038 Old Gympie Road offers a rare opportunity to embrace the ultimate acreage lifestyle.

Features include:

- Large Master Suite with ensuite
- 3 additional bedrooms with fans and built ins
- Gorgeous modern bathroom and ensuite with marble tile finish
- Spacious kitchen with 30mm stone bench and gas cooking
- Large sunken lounge and dining space
- Second living area/entertainment space
- Open plan living with indoor outdoor flow
- Incredible outdoor space overlooking the yard finish with travertine stone tiles
- Airconditioning in main areas
- Large 10kw solar system
- Internal laundry with excess storage room
- 13m x 8m Shed with Truck storage extension of 5m x 12m
- 2 fully functional horse stables
- Spacious horse paddock
- ALL WEATHER 40m x 40m HORSE ARENA
- Dual access driveway
- Fully fenced for dogs

Location:

- 2 minutes to Glass House Mountains township
- 2 Minutes to Glass House Lookout Cafe and Plantations Cafe
- 5 minutes to Beerwah
- 2 minute to the train station
- 50minutes to Sunshine Coast Airport and Brisbane Airport
- 50minutes to Brisbane
- 40 minutes to Mooloolaba

This property truly has it all! Perfect for equestrian enthusiasts, it also offers a stunning home and ample space for anyone seeking peace and tranquillity in a beautiful location. Don't miss out-call me today on 0484 241 804 to book your inspection!

More About this Property

Property ID	2MCHYX
Property Type	AcreageSemi-rural
Land Area	7253 m ²
Including	Toilets (2)

Jack Cornford 0484 241 803

Principal | jack.cornford@ljhooker.com.au

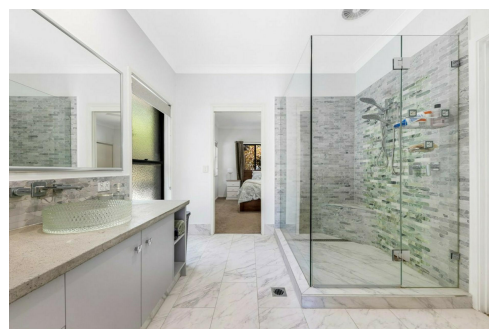
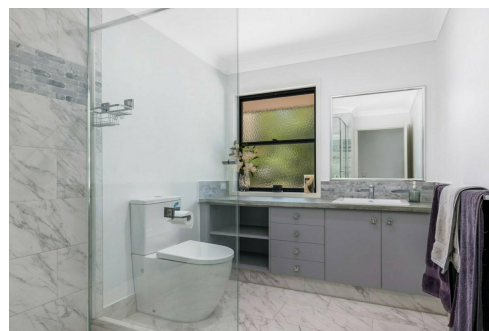
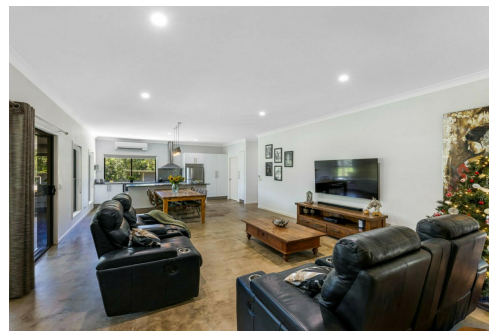
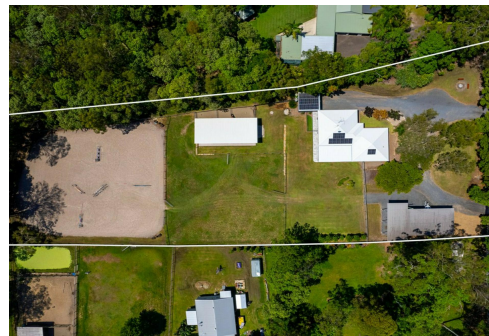
Ethan Ross 0406 963 705

Sales Consultant | ethan.ross@ljhooker.com.au

LJ Hooker Caloundra | Aura (07) 5318 7277

1 Edwards Terrace, BARINGA QLD 4551

caloundraaura.ljhooker.com.au | aura@ljhooker.com.au



Disclaimer: All information contained therein is gathered from relevant third parties sources.
We cannot guarantee or give any warranty about the information provided. Interested parties must rely solely on their own enquiries.

LJ Hooker Caloundra | Aura
(07) 5318 7277