



Gillieston Heights, 63A Scenic Drive

Great Investment In Fantastic Location!

A fantastic brick & tile investment, nestled within a highly sought-after family-friendly locale, presents this beautifully maintained 4-bedroom brick residence.

Upon entering, you're greeted by a sense of comfort and space, with two separate living areas, including a formal dining room, ensuring ample room for family gatherings and entertaining. The heart of the home, the kitchen is a culinary haven featuring brand quality appliances, seamlessly merging style with functionality.

The sleeping arrangements comprises of four good sized bedrooms, all equipped with built-in robes, with the master bedroom enjoying the luxury of its own ensuite for added privacy. Creature comforts such as split system air conditioning ensures year-round comfort, while the spotless main bathroom caters to family convenience.

Outside, the low-maintenance backyard beckons with its covered entertaining area and



For Sale
\$705,000

View
ljhooker.com.au/1DJZF6H

Contact
Todd Fisher
0438 592 920
tfisher.maitland@ljhooker.com.au
Ben Cotton
0434 638 822
bcotton.maitland@ljhooker.com.au



LJ Hooker Maitland
(02) 4933 5511

Disclaimer: All information contained therein is gathered from relevant third parties sources. We cannot guarantee or give any warranty about the information provided. Interested parties must rely solely on their own enquiries.

grass courtyard, providing the perfect setting for alfresco dining and relaxation.

Currently tenanted through to 12th of March 2025 at \$600pw.

Within minutes, residents can access the Gillieston Heights Shopping Village, boasting essential amenities such as medical facilities, cafes, and an IGA supermarket, ensuring all daily needs are met with ease. Additionally, the proximity to the Hunter Expressway facilitates seamless transit to both the upper Hunter Valley and Newcastle, promising a lifestyle of convenience and connectivity.

Proudly marketed by LJ Hooker Maitland, please call exclusive agents Todd Fisher 0438 592 920 or Ben Cotton 0434 638 822 - 7 days for all inspections & further information.

All information contained herein is gathered from sources we deem to be reliable. However, we cannot guarantee its accuracy and interested persons should rely on their own enquiries.

More About this Property

Property ID	1DJZF6H
Property Type	House
Land Area	476 m ²
Including	Ensuite Toilets (2) Built-in-Robes Close to Schools Close to Shops Close to Transport

Todd Fisher 0438 592 920

Principal/Licensee in Charge | tfisher.maitland@ljhooker.com.au

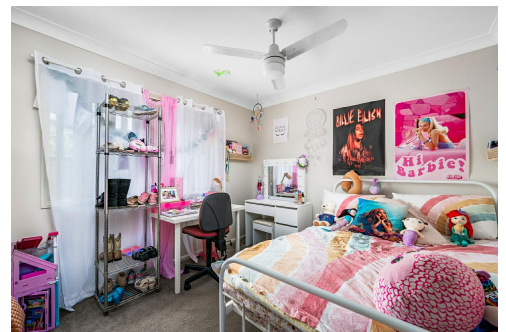
Ben Cotton 0434 638 822

Licensed Real Estate Agent & Auctioneer | bcotton.maitland@ljhooker.com.au

LJ Hooker Maitland (02) 4933 5511

24 Ken Tubman Drive, MAITLAND NSW 2320

maitland.ljhooker.com.au | maitland@ljhooker.com.au



LJ Hooker Maitland
(02) 4933 5511

Disclaimer: All information contained therein is gathered from relevant third parties sources. We cannot guarantee or give any warranty about the information provided. Interested parties must rely solely on their own enquiries.



63A Scenic Dr, Gillieston Heights

All information contained herein is gathered from sources we deem reliable. However, we cannot guarantee its accuracy and act as a messenger only in passing on the details. Interested parties should rely on their own inquiries and the contract for sale. The floor plans are artist's impressions only. The site plan is not to scale.

LJ Hooker
Maitland

LJ Hooker

LJ Hooker Maitland
(02) 4933 5511

Disclaimer: All information contained therein is gathered from relevant third parties sources. We cannot guarantee or give any warranty about the information provided. Interested parties must rely solely on their own enquiries.