



45A Scenic Drive, Gillieston Heights


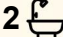
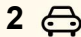
Beautiful 4 Bedroom residence Available NOW

This immaculately presented four-bedroom home delivers low-maintenance living with nothing left to do. Set on a 455sqm block, this classy home stands out as the neat-as-a-pin option - ideal for first home buyers wanting a smooth start, investors chasing a dependable asset, or downsizers seeking simplicity without compromise.

Inside, the home unfolds with a practical single-level layout, offering two separate living zones to comfortably accommodate growing families. The kitchen forms the heart of the home, equipped with quality appliances and ample storage, seamlessly connecting to the open-plan living and dining space.

All four bedrooms are well proportioned with built-in robes, while the master enjoys the privacy of its own ensuite. A spotless main bathroom services the remaining bedrooms, and split system air conditioning ensures year-round comfort.

Outdoors, the covered alfresco area overlooks a tidy, easy-care yard - large enough for kids or pets, yet manageable enough to keep weekends free.

4  2  2 

FOR SALE
\$858,000

AGENTS

Todd Fisher
0438 592 920
tfisher.maitland@ljhooker.com.au

Jack Fisher
0438 165 825
jfisher.maitland@ljhooker.com.au

AGENCY

LJ Hooker Maitland
(02) 4933 5511

All information contained therein is gathered from relevant third parties sources.
We cannot guarantee or give any warranty about the information provided.
Interested parties must rely solely on their own enquiries.

 **LJ Hooker**

Looking at investment we'd see this home circa \$650pw.

This is a turnkey opportunity in a suburb renowned for its strong demand and community appeal. Moments from the local shopping village, medical facilities, cafes and the Hunter Expressway, the location balances lifestyle and connectivity with ease.

Proudly marketed by LJ Hooker Maitland, please call exclusive agents Todd Fisher 0438 592 920 or Ben Cotton 0434 638 822 - 7 days for all inspections & further information.

All information contained herein is gathered from sources we deem to be reliable. However, we cannot guarantee its accuracy and interested persons should rely on their own enquiries.

MORE DETAILS

Property ID	1EYEF6H
Property Type	House
Land Area	455 m2
Including	Ensuite
	Air Conditioning
	Toilets (2)
	Built-in-Robes
	Close to Schools
	Close to Shops
	Close to Transport

Todd Fisher 0438 592 920

Principal/Licensee in Charge | tfisher.maitland@ljhooker.com.au

Jack Fisher 0438 165 825

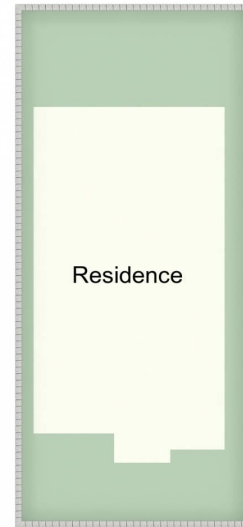
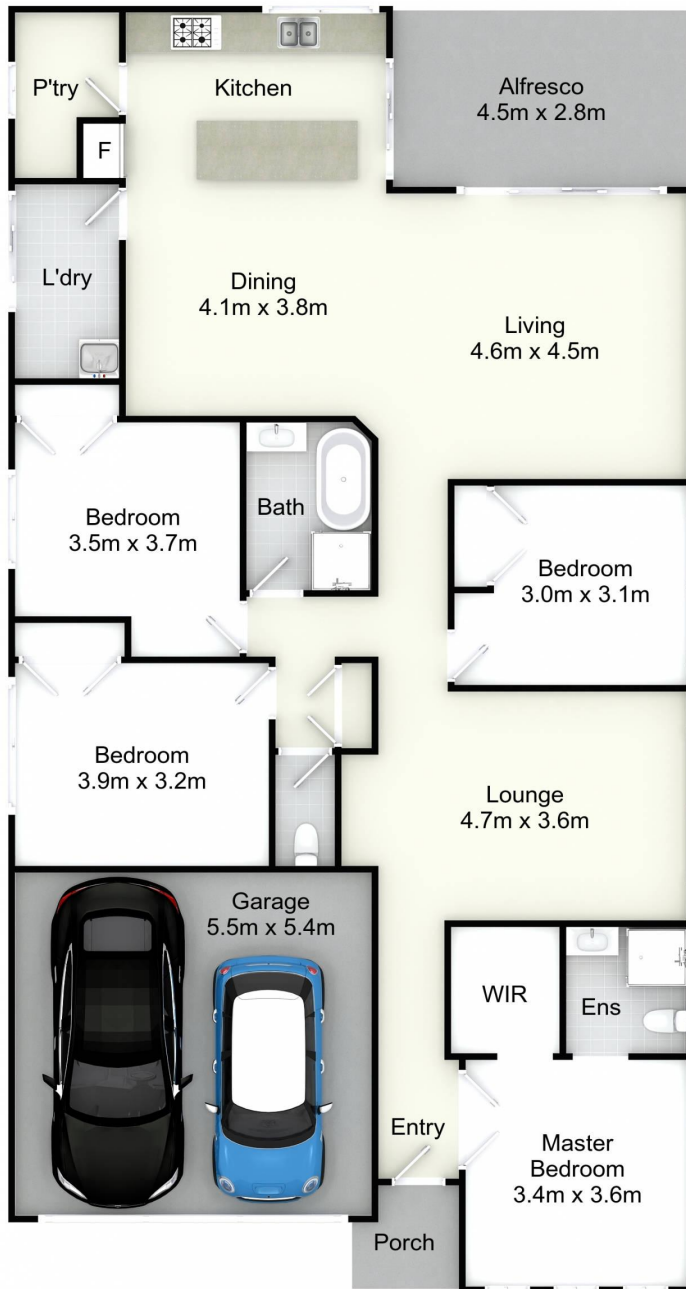
Sales Associate | jfisher.maitland@ljhooker.com.au

LJ Hooker Maitland (02) 4933 5511

24 Ken Tubman Drive, MAITLAND NSW 2320

maitland.ljhooker.com.au | maitland@ljhooker.com.au





Site Plan
(Not to Scale)

45A Scenic Dr, Gillieston Heights

All information contained herein is gathered from sources we deem reliable. However, we cannot guarantee its accuracy and act as a messenger only in passing on the details. Interested parties should rely on their own inquiries and the contract for sale. The floor plans are artist's impressions only. The site plan is not to scale.

 **LJ Hooker**
Maitland

All information contained therein is gathered from relevant third parties sources. We cannot guarantee or give any warranty about the information provided. Interested parties must rely solely on their own enquiries.

 **LJ Hooker**