



38 Scenic Drive, Gillieston Heights

Invest or Nest - the choice is Yours!

Located within the original Gillieston Heights release, 38 Scenic Drive presents a solid and dependable four-bedroom brick and Colorbond home on a 527sqm block - offering the most practical design, with an attractive price point and scope to add your own touch over time.

Designed for comfortable everyday living, the floorplan includes two separate living areas and a centrally positioned kitchen that anchors the home. The layout flows effortlessly to the covered outdoor entertaining space, creating a seamless indoor-outdoor connection.

Each of the four bedrooms includes built-in robes, with the master bedroom complete with its own ensuite & walk in. The main bathroom services the remainder of the home, and split system air conditioning adds year-round comfort.

The backyard is low maintenance and private, providing just enough space for children, pets or relaxed weekend barbecues without the burden of extensive upkeep.

Currently leased to a lovely family, however vacant possession is possible if required. Currently at \$550pw - with scope for an increase

4 🏠 2 🚿 2 🚗

FOR SALE
\$860,000

AGENTS

Todd Fisher
0438 592 920
tfisher.maitland@ljhooker.com.au

Jack Fisher
0438 165 825
jfisher.maitland@ljhooker.com.au

AGENCY

LJ Hooker Maitland
(02) 4933 5511

All information contained therein is gathered from relevant third parties sources.
We cannot guarantee or give any warranty about the information provided.
Interested parties must rely solely on their own enquiries.

 **LJ Hooker**

on the horizon.

This property represents a compelling investment or an accessible entry into a thriving community. With shopping, cafes, medical services and direct access to the Hunter Expressway just minutes away, convenience is firmly on your side.

Proudly marketed by LJ Hooker Maitland, please call exclusive agents Todd Fisher 0438 592 920, Ben Cotton 0434 638 822 or Jack Fisher 0438 165 825- 7 days for all inspections & further information.

All information contained herein is gathered from sources we deem to be reliable. However, we cannot guarantee its accuracy and interested persons should rely on their own enquiries.

MORE DETAILS

Property ID	1EYGF6H
Property Type	House
Land Area	527 m2
Including	Ensuite
	Air Conditioning
	Toilets (2)
	Built-in-Robes
	Close to Schools
	Close to Shops
	Close to Transport

Todd Fisher 0438 592 920

Principal/Licensee in Charge | tfisher.maitland@ljhooker.com.au

Jack Fisher 0438 165 825

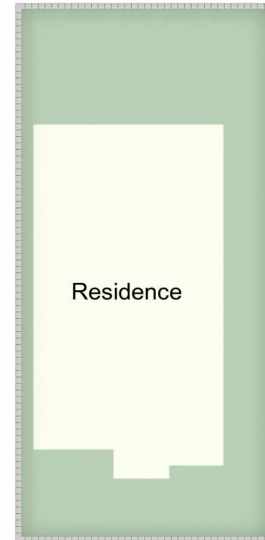
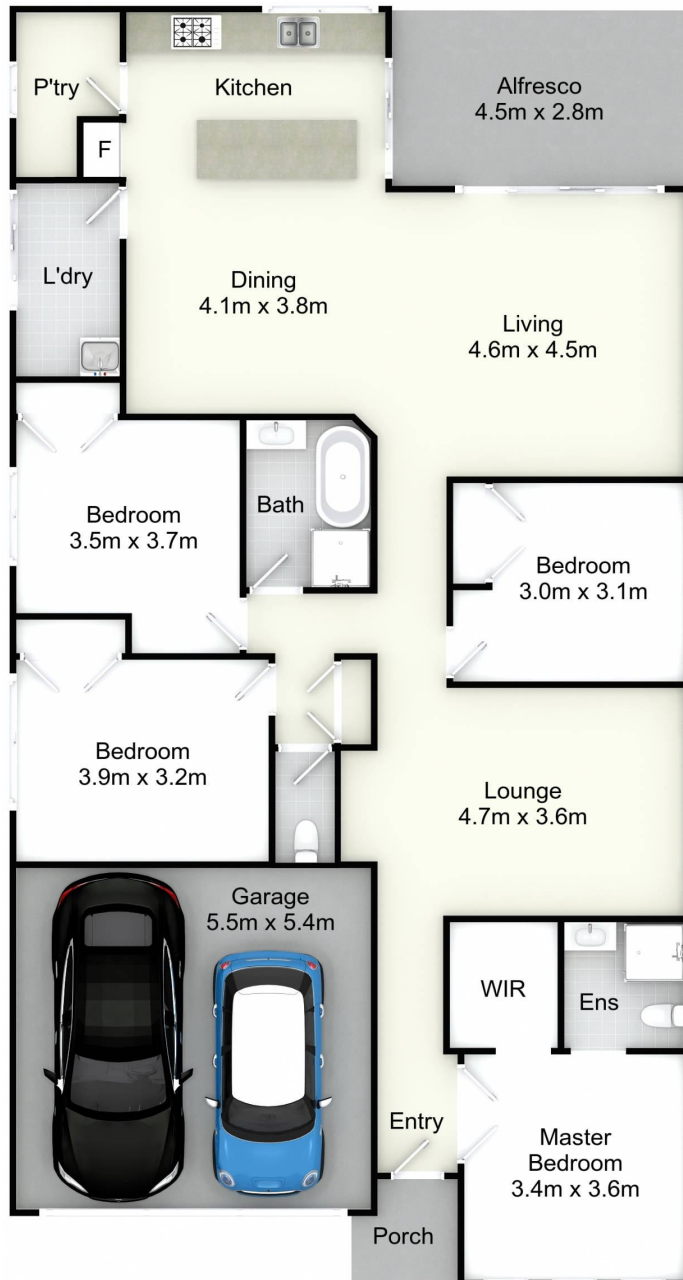
Sales Associate | jfisher.maitland@ljhooker.com.au

LJ Hooker Maitland (02) 4933 5511

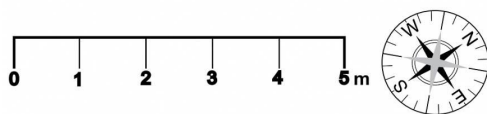
24 Ken Tubman Drive, MAITLAND NSW 2320

maitland.ljhooker.com.au | maitland@ljhooker.com.au





Site Plan
(Not to Scale)



38 Scenic Dr, Gillieston Heights

All information contained herein is gathered from sources we deem reliable. However, we cannot guarantee its accuracy and act as a messenger only in passing on the details. Interested parties should rely on their own inquiries and the contract for sale. The floor plans are artist's impressions only. The site plan is not to scale.



All information contained therein is gathered from relevant third parties sources. We cannot guarantee or give any warranty about the information provided. Interested parties must rely solely on their own enquiries.

