

Gillieston Heights, 23 Pebble Creek Way

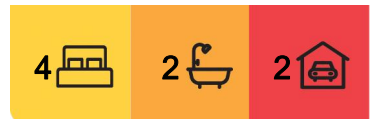
SPACE, STYLE & COMFORT IN AN IDEAL LOCATION!

Proudly positioned on the high side of the street, located in a peaceful cul-de-sac & taking in a peaceful vista, with no opposite neighbours is this outstanding home that ticks all of the boxes for the modern family!

Nestled in the thriving community of Gillieston Heights, this beautiful family home offers you space, style, and functionality in one impressive package. Internally boasting four generously sized bedrooms, including a huge master retreat with its own ensuite & walk in robe, this home is designed for comfortable living.

The free-flowing floorplan seamlessly connects you to the open-plan kitchen, dining, and living area, while being complimented by a dedicated media room -just perfect for family movie nights, or Fortnite sessions with the kids.

Plantation shutters feature throughout, with a neutral colour palette, adding a touch of



For Sale
\$750,000

View
ljhooker.com.au/1DVRF6H

Contact
Ben Cotton
0434 638 822
bcotton.maitland@ljhooker.com.au



LJ Hooker Maitland
(02) 4933 5511

Disclaimer: All information contained therein is gathered from relevant third parties sources. We cannot guarantee or give any warranty about the information provided. Interested parties must rely solely on their own enquiries.

class and sophistication, while hybrid flooring and LED downlights enhance the home's modern appeal. Stepping outside into an inviting undercover alfresco area, overlooking plenty of green space for the kids to play & fire pit area. With some ingenuity, you can take full advantage of the side access on offer.

Additional features include zoned ducted air conditioning and a solar panels, ensuring year-round comfort and energy efficiency. This is a fantastic opportunity in a sought-after location - don't miss your chance to call this home!

Proudly marketed by LJ Hooker Maitland, please call exclusive agent Ben Cotton 0434 638 822 - 7 days for all inspections & further information.

All information contained herein is gathered from sources we deem to be reliable. However, we cannot guarantee its accuracy and interested persons should rely on their own enquiries.

More About this Property

| | |
|----------------------|--|
| Property ID | 1DVRF6H |
| Property Type | House |
| Including | Ensuite Air Conditioning Toilets (2) Built-in-Robes Close to Schools Close to Shops Close to Transport |

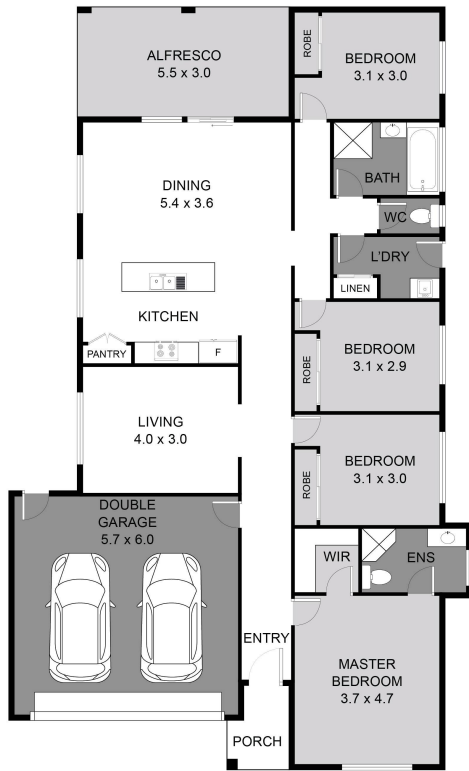
Ben Cotton 0434 638 822
Licensed Real Estate Agent & Auctioneer | bcotton.maitland@ljhooker.com.au

LJ Hooker Maitland (02) 4933 5511
24 Ken Tubman Drive, MAITLAND NSW 2320
maitland.ljhooker.com.au | maitland@ljhooker.com.au

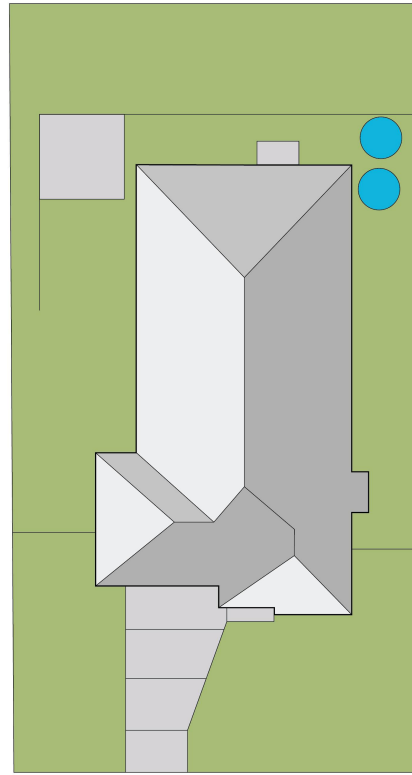


LJ Hooker Maitland
(02) 4933 5511

Disclaimer: All information contained therein is gathered from relevant third parties sources. We cannot guarantee or give any warranty about the information provided. Interested parties must rely solely on their own enquiries.



FLOOR PLAN



SITE PLAN



23 Pebble Creek Way
Gillieston Heights

DISCLAIMER: Plans shown are for presentation purposes only and not part of any legal document or title. They are subject to errors, omissions, inaccuracies and should not be used as a sole and accurate reference. Interested parties should make their own inquiries using independent sources.

LJ Hooker
Maitland

LJ Hooker

LJ Hooker Maitland
(02) 4933 5511

Disclaimer: All information contained therein is gathered from relevant third parties sources. We cannot guarantee or give any warranty about the information provided. Interested parties must rely solely on their own enquiries.