

Gillen, 13 Ochre Court

Gillen's Gift

This unique housing complex is positioned on the corner of Memorial Avenue and Flynn Drive and was designed as a one off, lifestyle village. Ochre Court is tucked away at the rear amongst a mix of three and two bedroom homes, each individually titled.

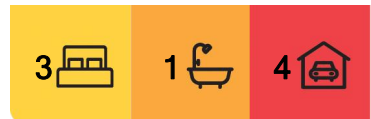
There is no labour of love here, its all lifestyle! This impeccable home has been upgraded with functionality and style. The open plan living has been completely re floored with beautiful white ceramic tiling featuring throughout the front living room, the separate dining room, family room and beyond.

The black and white, all-electric kitchen is brand new along with the designer family bathroom. Even the toilet looks terrific!

All three spacious bedrooms have new carpets, contemporary window dressings and built in robes. For convenience there is two-way access from the bathroom to the main



Disclaimer: All information contained therein is gathered from relevant third parties sources. We cannot guarantee or give any warranty about the information provided. Interested parties must rely solely on their own enquiries.



For Sale
Please Call

View
ljhooker.com.au/2CGRFD5

Contact
Gail Tuxworth
0418 897 009
gtuxworth@ljhalicesprings.com.au

LJ Hooker Alice Springs
(08) 8950 6333

bedroom, as well as passageway access.

There's glass sliding door access from the family room to the fabulous outdoor entertaining area. Relax under the patio and think about jumping into the sparkling blue, inground plunge spa. The gardens are terrific, sculptured with formed lush garden beds, pathways and plenty of shade.

Ducted evaporative air conditioning along with ceiling fans and two split systems all assist with and climate extremes.

The double auto lock-up garage is a definite plus there is ample off street parking. The vast array of solar panels installed are perfect to offset the power bills.

All of this space is amazing and being on the corner means there is still plenty of front yard to add your own creativity to the block.

Positioned on a 475 sqm allotment is perfect for those wanting it all, but happy not to be a slave to the garden.

Located within easy walking distance to shops, schools, sporting fields and all the while having great views of the spectacular mountain ranges.

- Council Rates - \$2,205.07 pa
- Lifestyle home on 475 sqm allotment
- Two separate living areas plus dining room
- Brand new kitchen and designer bathroom
- Fabulous outdoor entertaining, inground plunge spa
- Double auto lock up garage, off street parking
- Array of solar panels

More About this Property

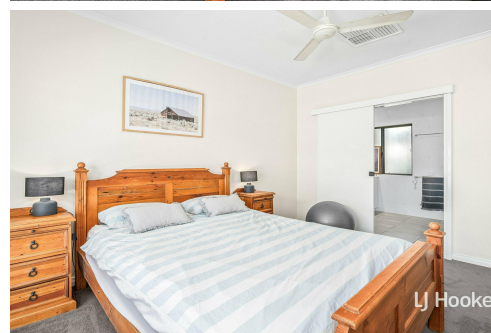
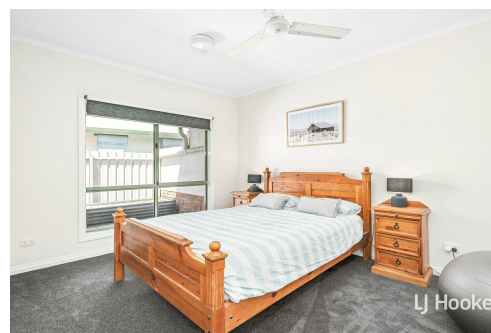
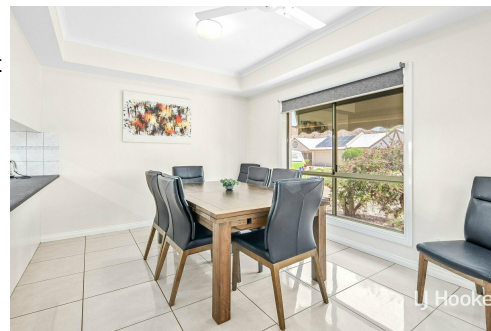
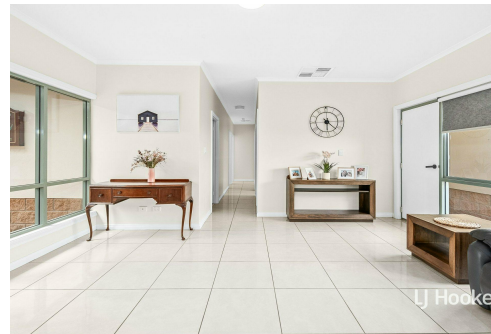
Property ID	2CGRFD5
Property Type	House
Land Area	475 m ²
Including	Toilets (1)

Gail Tuxworth 0418 897 009

Sales Representative | gtuxworth@ljhalicesprings.com.au

LJ Hooker Alice Springs (08) 8950 6333

Suite 2 52 Hartley Street, ALICE SPRINGS NT 0870
alicesprings.ljhooker.com.au | office@ljhalicesprings.com.au



Disclaimer: All information contained therein is gathered from relevant third parties sources. We cannot guarantee or give any warranty about the information provided. Interested parties must rely solely on their own enquiries.

**LJ Hooker Alice Springs
(08) 8950 6333**