



Gilgai, 29 Woodford Place

Outstanding Opportunity in Gilgai

Expressions of Interest

Closing Date: Monday, 5PM 21st April 2025 (unless sold prior)

- Located approx. 10km from Inverell in the village Gilgai
- Block size approx. 7,718 sqm
- 5 bay colorbond shed with power, concrete floor and bathroom
- Town water and sewer
- 2 bedroom weatherboard cottage in need of renovation or demolition
- Subdivision potential, subject to Council approval

Opportunities like this rarely come along. For further information or to schedule a viewing, contact Sean Taylor 0409 666 854.

Disclaimer: All information contained is gathered from relevant third party sources. We



Disclaimer: All information contained therein is gathered from relevant third parties sources. We cannot guarantee or give any warranty about the information provided. Interested parties must rely solely on their own enquiries.

2

2

4

For Sale

Expression of Interest

View

By Appointment

Contact

Sean Taylor

0409 666 854

staylor.inverell@ljhooker.com.au

LJ Hooker Inverell
(02) 6721 0215

cannot guarantee or give any warranty about the information provided. Interested parties must rely solely on their own enquiries.

More About this Property

Property ID	PU5H8U
Property Type	House
Land Area	7718 m ²

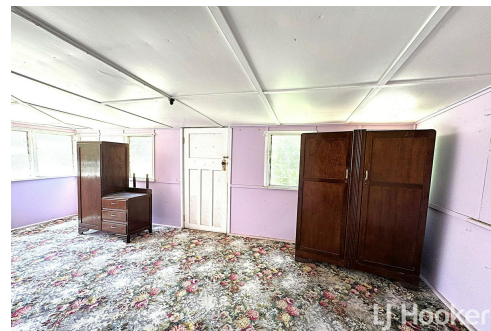
Sean Taylor 0409 666 854

Residential & Commercial Sales | staylor.inverell@ljhooker.com.au

LJ Hooker Inverell (02) 6721 0215

30-32 Otho Street, INVERELL NSW 2360

inverell.ljhooker.com.au | inverell@ljhooker.com.au



Disclaimer: All information contained therein is gathered from relevant third parties sources. We cannot guarantee or give any warranty about the information provided. Interested parties must rely solely on their own enquiries.

LJ Hooker Inverell
(02) 6721 0215

