

## Geraldine, 6 Strawberry Place

### Charming Modern Home in Geraldine

Welcome to a delightful home in Geraldine. Nestled on Strawberry Place, this charming 2-bedroom home offers the perfect blend of modern living and small-town charm. Built in 2022, the property boasts a comfortable 122m<sup>2</sup> of living space, thoughtfully designed to maximize comfort and functionality.

- \* Open plan kitchen, dining & living that is sunny warm & inviting
- \* Top quality kitchen & appliances
- \* Handy computer nook in the hallway
- \* Spacious bathroom offering dual access and a large walk in shower
- \* Separate laundry with good storage & 2nd WC
- \* Easy care gardens with raised vegetable beds

Don't miss your chance to own this affordable gem in one of New Zealand's most welcoming towns. Whether you're a first-time buyer or looking to downsize, this home represents incredible value. Act quickly - properties like this in Geraldine are snapped up fast!



**Disclaimer:** All information contained therein is gathered from relevant third parties sources. We cannot guarantee or give any warranty about the information provided. Interested parties must rely solely on their own enquiries.

2

1

1

#### For Sale

Enquiries Over \$599,000

#### View

[ljhooker.co.nz/7JSGDY](https://ljhooker.co.nz/7JSGDY)

#### Contact

**Anne Weschenfelder**

027 693 8116

[anne.geraldine@ljhooker.co.nz](mailto:anne.geraldine@ljhooker.co.nz)

**LJ Hooker Geraldine**

(03) 693 9775

Enting Real Estate Limited

**Disclaimer:**

This information has been supplied by the owners and Corelogic. LJ Hooker Timaru, Geraldine and Waimate are merely passing over this information as supplied to us. We cannot guarantee its accuracy and reliability as we have not checked, audited or reviewed the information. All intending purchasers are advised to conduct their own due diligence investigation into this information. To the maximum extent permitted by law, we do not accept any responsibility to any part for the accuracy or use of the information herein. Enting Real Estate Limited Licensed (REAA 2008).

## More About this Property

<b>Property ID</b>	7JSGDY
<b>Property Type</b>	House
<b>House Size</b>	122 m <sup>2</sup>
<b>Land Area</b>	325 m <sup>2</sup>
<b>Including</b>	Toilets (2)
<b>Licensed Real Estate Agents (REAA2008)</b>	

**Anne Weschenfelder 027 693 8116**

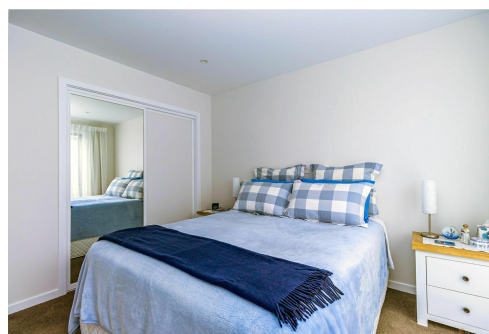
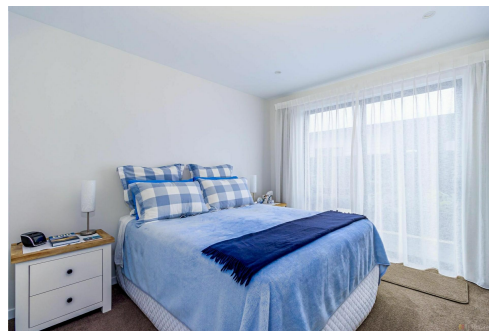
Property Consultant | [anne.geraldine@ljhooker.co.nz](mailto:anne.geraldine@ljhooker.co.nz)

**LJ Hooker Geraldine (03) 693 9775**

Enting Real Estate Limited

18 Talbot Street, GERALDINE 7930

[geraldine.ljhooker.co.nz](mailto:geraldine.ljhooker.co.nz) | [Geraldine@ljhooker.co.nz](mailto:Geraldine@ljhooker.co.nz)



**Disclaimer:** All information contained therein is gathered from relevant third parties sources.

We cannot guarantee or give any warranty about the information provided. Interested parties must rely solely on their own enquiries.

**LJ Hooker Geraldine**

**(03) 693 9775**

Enting Real Estate Limited