



12 Shaw Street, Geraldine

## Contemporary Living with Stunning Forest Views


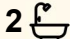
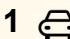
Completed in 2024, this eye-catching contemporary home combines modern comfort with stunning views to Talbot Forest, all within an easy stroll to the heart of Geraldine. Thoughtfully designed for today's lifestyle, the spacious open plan kitchen, dining and lounge area is warm and inviting, featuring a heat pump, low-emission log burner and full double glazing for year-round comfort.

Offering four double bedrooms, the master includes an ensuite, while a stylish family bathroom services the remainder of the home. Two bedrooms feature ranch sliders opening directly onto the deck, enhancing the seamless indoor-outdoor flow and creating excellent spaces for entertaining. A separate laundry and generous storage further add to the practicality of the home.

Set on an impressive 1853m<sup>2</sup> section, the grounds have been beautifully planted in natives, creating an easy-care sanctuary alive with birdlife. A large single garage, currently about to go under construction, will further enhance this admired property.

### Disclaimer:

Please note general property details are sourced from property data software and local council records and we may not have been able to verify the accuracy of some information. All intending purchasers are

4  2  1 

### FOR SALE

Enquiries Over \$835,000

### VIEW

Sun 21st Jun @ 1:00PM - 1:30PM

### AGENTS

Anne Weschenfelder

027 693 8116

[anne.geraldine@ljhooker.co.nz](mailto:anne.geraldine@ljhooker.co.nz)

### AGENCY

LJ Hooker Geraldine

(03) 693 9775

Enting Real Estate Limited

advised to conduct their own due diligence investigations. Enting Real Estate Limited Licensed (REAA 2008).

## MORE DETAILS

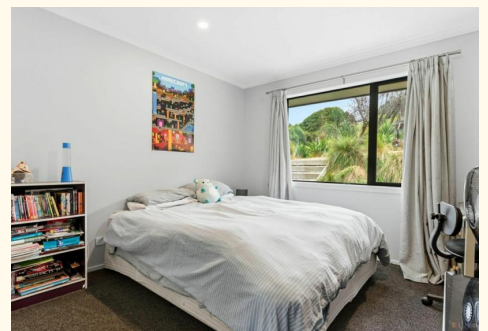
Property ID 7Q4GDY  
Property Type House  
House Size 140 m2  
Land Area 1853 m2  
Licensed Real Estate Agents (REAA2008)

**Anne Weschenfelder 027 693 8116**

Property Consultant | [anne.geraldine@ljhooker.co.nz](mailto:anne.geraldine@ljhooker.co.nz)

**LJ Hooker Geraldine (03) 693 9775**

Enting Real Estate Limited  
18 Talbot Street, GERALDINE 7930  
[geraldine.ljhooker.co.nz](mailto:geraldine.ljhooker.co.nz) | [Geraldine@ljhooker.co.nz](mailto:Geraldine@ljhooker.co.nz)



All information contained therein is gathered from relevant third parties sources.  
We cannot guarantee or give any warranty about the information provided.  
Interested parties must rely solely on their own enquiries.