

19 Mira Street, Gepps Cross

## Your First Home or Family Abode all in a Quiet Location!

Auction Location: 19 Mira Street, Gepps Cross SA 5094

Set in a beautifully quiet tree lined street, with all of the features you're looking for in your first start in the market, family entertainer or the perfect investment, all while being set on a very spacious and well utilised 570sqm\* allotment, it is my absolute pleasure to present this much loved family home to the market.

Built c.1968 and having been a loved family home by the current owner over many years owing to the location and many wonderful features throughout, all you need to do is move in and enjoy! With a light-filled and spacious eat in kitchen and large central living area with potential for a bar area and three generously sized bedrooms, it ticks all of the boxes for a home to relax and enjoy in. The property boasts wonderfully established and easy to look after gardens to be admired and enjoyed front and rear, with the rear also encompassing a double length carport with auto roller-door leading into a full sized garage!

Features you will love:

- Large master bedroom

3 1 3

### FOR SALE

Auction - Saturday, March 21st at 2:00pm

### AGENTS

Jordan Nockolds  
0447 809 650  
jordann@ljhsales.com.au

Robert Bonelli  
0497 808 908  
robertb@ljhsales.com.au

### AGENCY

LJ Hooker Property Specialists  
(08) 8289 6660

All information contained therein is gathered from relevant third parties sources. We cannot guarantee or give any warranty about the information provided. Interested parties must rely solely on their own enquiries.

LJ Hooker

- Well-proportioned bedrooms two and three
- Ceiling fans to main bedroom and bedroom two
- Large living area with split system air conditioning
- Light-filled eat in kitchen with gas cooking
- Internal laundry with WC and easy access to rear
- Double length single carport with auto roller door leading to rear garage
- Private and established rear gardens and outdoor entertaining

You're spoilt for choice when it comes to local shopping and amenities, with the expansive Sefton Plaza and Northpark shopping centres only a 5 minute drive away, Gepps X Home HQ is just around the corner for homewares and larger shopping and just a little further afield is the Adelaide CBD, only a 15 minute drive away.

For the little ones, Blair Athol North B-6 School is only a few minutes drive away and zoning to Roma Mitchell Secondary School is very well sought after!

For the ever-important public transport, Stop 27 on the East side of Main North Road Road, barely a few minutes' walk away, provides a quick 30 minute route directly into the Adelaide CBD.

Year Built | 1968

Land Size | 570sqm\*

Zoning | GN - General Neighbourhood//

Local Council | City of Port Adelaide Enfield

Council Rates | TBC

Title | Torrens

Easements | No

Internal Living | 99sqm\*

- Approximate Values

All information provided has been obtained from sources we believe to be accurate, however, we cannot guarantee the information is accurate and we accept no liability for any errors or omissions (including but not limited to a property's land size, floor plans and size, building age and condition). Interested parties should make their own enquiries and obtain their own legal and financial advice. Should this property be scheduled for auction, the Vendor's Statement may be inspected at our LJ Hooker Property Specialists Real Estate office for 3 consecutive business days immediately preceding the auction and at the auction for 30 minutes before it starts.

RLA 208516

## MORE DETAILS

Property ID	2D2FGJU
Property Type	House
House Size	99 m2
Land Area	570 m2
Including	Air Conditioning Outdoor Entertaining Floorboards Workshop Secure Parking

### Jordan Nockolds 0447 809 650

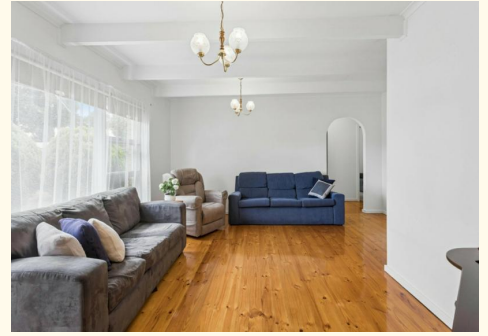
Sales Specialist | Property Inspector | [jordann@ljhsales.com.au](mailto:jordann@ljhsales.com.au)

### Robert Bonelli 0497 808 908

Sales Specialist | [robertb@ljhsales.com.au](mailto:robertb@ljhsales.com.au)

### LJ Hooker Property Specialists (08) 8289 6660

Shop 2, 1007 North East Road, RIDGEHAVEN SA 5097  
[propertyspecialists.ljhooker.com.au](http://propertyspecialists.ljhooker.com.au) | [info@ljhsupport.com.au](mailto:info@ljhsupport.com.au)





Scale in metres. This drawing is for illustration purposes only. All measurements are approximate and details intended to be relied upon should be independently verified.

Produced by The Fotobase Group