



43 Keel Retreat, Geographe

Premium Canal Living, Southwest Lifestyle at its Best

Set within one of Geographe's in WA leading holiday resort area, is our most tightly held canal precincts, 43 Keel Retreat presents an exceptional opportunity to embrace the ultimate Southwest lifestyle. Positioned on a generous 785sqm title with your own serviced jetty and deep-water mooring This impressive double brick and tile roof (insulated) residence combines relaxed family living with boating convenience in one of Busselton's most desirable coastal settings. Whether you love entertaining, spending weekends on the water, or simply enjoying a laid-back lifestyle close to town, this is a home designed to make every day feel like a holiday.

- Large 785sqm title with fixed wooden jetty approximately 6m in length and deep-water mooring
- Three king-size bedrooms, plus oversized forth bedroom or theatre room
- Two spacious bathrooms including private ensuite
- Double Brick and tile insulated roof, construction with beautiful Marri timber flooring and raked ceilings
- Reverse cycle Split system air conditioning, alarm system for comfort and peace of mind
- Expansive 45sqm semi-enclosed alfresco deck with composite timber decking, electric wall heating, electronic retractable blinds

4 2 2

FOR SALE
From \$2,250,000

VIEW
Sun 14th Jun @ 2:00PM - 3:00PM

AGENTS
Judy Sliker
0408 554 187
judy.sliker@ljhsouthwest.com.au

Jeremy Lloyd
0414 651 458
jeremy.lloyd@ljhsouthwest.com.au

AGENCY
LJ Hooker Property South West WA
(08) 9791 6880

All information contained therein is gathered from relevant third parties sources.
We cannot guarantee or give any warranty about the information provided.
Interested parties must rely solely on their own enquiries.

LJ Hooker

- and built-in BBQ with sink and 2 bar fridges.
- Double garage with rear vehicle access
- Fully serviced power and town water connections

Step inside and discover a spacious open plan design where everyday living feels effortless. Raked ceilings create a wonderful sense of space, while large sliding doors invite natural light and connect seamlessly to the alfresco area. Rich Marri flooring brings warmth and character to the main living zones, creating an inviting atmosphere for family gatherings and relaxed coastal living.

At the centre of the home, the modern kitchen has been thoughtfully designed with functionality in mind. Featuring a natural gas cooktop, electric oven, built-in pantry, dishwasher, double fridge recess, and island bench, it offers the perfect setting for preparing meals while remaining connected to family and guests.

The separate theatre room provides valuable flexibility, whether used as a large fourth bedroom, media room, children's retreat, or home office. The generous master suite is positioned as a private sanctuary, complete with walk-in robe, split system air conditioning, plantation shutters, and direct outdoor access. Bedrooms two and three include built-in robes, quality carpet, and individual split system air conditioning, ensuring year-round comfort for family or guests.

Outside is where this property truly shines. The expansive alfresco deck has been designed for year-round enjoyment, with electric heating and retractable blinds creating a comfortable entertaining space regardless of the season. Established gardens frame the outdoor areas beautifully, while your private fixed jetty offers an enviable lifestyle opportunity. Moor your boat at home, head out for an evening cruise, enjoy fresh squid and crabs for dinner, or simply relax with a wine and cheese sunset cruise right from your own backyard.

Living in Geographe means embracing one of Busselton's most celebrated coastal lifestyles. Just minutes from pristine beaches, local reserves, schools, shopping and medical facilities, convenience meets recreation at every turn. Busselton/Margaret River Airport is only a short 15-minute drive away, offering direct flights to Melbourne in around three and a half hours, with FIFO workers now enjoying direct services to work sites. Perth is approximately two and a half hours by car, making travel easier than ever. As the gateway to the spectacular

Margaret River wine region and the stunning Southwest coastline, Busselton delivers an enviable lifestyle. Explore world-class wineries, breathtaking beaches, renowned surf breaks, sports fishing adventures and the famous Busselton Jetty, home of the annual Busselton Jetty Swim each February. Busselton proudly hosts one of Australia's premier IRONMAN events and offers an endless list of attractions including limestone caves, whale watching tours, award-winning restaurants, cafés and spectacular four-wheel driving adventures through beaches and surrounding forests. Families continue to choose the area for its exceptional lifestyle and strong community feel, with access to a wide selection of primary and secondary schools, both public and private, along with TAFE and university facilities nearby. Sporting facilities are outstanding, with clubs and recreation options catering to every interest. This truly is a lifestyle few properties can offer.

Whether you are searching for your forever home or an investment opportunity, do not miss your chance to view this exceptional property -Listed Price From \$2,250,000 call Judy Sliker 0408 554 187 or Jeremy Lloyd 0414 651 458 for your private viewing!

MORE DETAILS

Property ID	1AK8HND
Property Type	House
House Size	196 m2
Land Area	785 m2
Including	Ensuite
	Air Conditioning
	Toilets (2)
	Deck
	Outdoor Entertaining
	Built-in-Robes

Judy Sliker 0408 554 187

Sales Consultant - Busselton | judy.sliker@ljhsouthwest.com.au

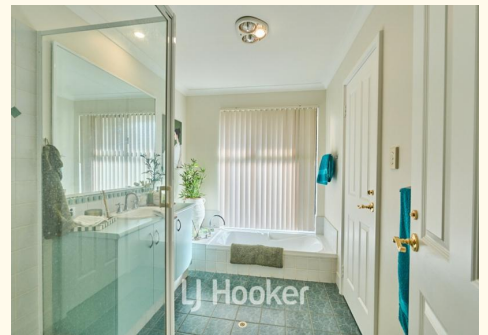
Jeremy Lloyd 0414 651 458

Sales Consultant - Busselton | jeremy.lloyd@ljhsouthwest.com.au

LJ Hooker Property South West WA (08) 9791 6880

130 Victoria Street, BUNBURY WA 6230

southwestwa.ljhooker.com.au | bunbury@ljhsouthwest.com.au





TOTAL: 232 m2

1st floor: 232 m2

EXCLUDED AREAS: CARPORT: 45 m2, COVERED DECK: 86 m2, LOW CEILING: 1 m2,
WALLS: 14 m2

FLOOR PLAN CREATED BY CUBICADA APP. MEASUREMENTS DEEMED HIGHLY RELIABLE BUT NOT GUARANTEED.