



4 Bayou Court, Geographe

Act Fast: Dream Home in Busselton with Caravan Access

4 Bayou Court, Geographe offers contemporary family living in one of the south west's most sought-after suburbs. Ideal for downsizers seeking room to store the caravan, entertain and relax, this 2017 built home balances modern comforts with practical design. Enjoy generous living spaces, clever outdoor flow, and thoughtful features that support a relaxed, stylish lifestyle just minutes from the beach and local amenities.

Key features include;

531 sqm block

Side access with rear garage suitable to store a caravan

3 bedrooms, 2 bathrooms (including ensuite)


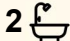
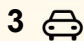
Modern features including vinyl plank flooring, tiled alfresco, and ducted reverse cycle air conditioning

Comfort elements such as ceiling fans throughout, gas cooking, instant gas hot water

Lifestyle highlights include a fully enclosed alfresco with built-in kitchen & retractable awning

Separate theatre room

Step inside to find a bright, spacious layout with three generous

3  2  3 

FOR SALE

Please Call

AGENTS

Jeremy Lloyd

0414 651 458

jeremy.lloyd@ljhsouthwest.com.au

AGENCY

LJ Hooker Property South West WA

(08) 9791 6880

All information contained therein is gathered from relevant third parties sources.

We cannot guarantee or give any warranty about the information provided.

Interested parties must rely solely on their own enquiries.

 **LJ Hooker**

queen-sized bedrooms, each featuring built-in robes, ducted air conditioning, and ceiling fans for year-round comfort. The master suite is a retreat with a walk-in robe, and a luxe ensuite boasting a double shower and double vanity. The home theatre room invites cosy movie nights, while living and dining areas flow seamlessly with stacker doors to a fully enclosed alfresco.

The kitchen is a chef's delight with 20mm stone benchtops, a large island bench with waterfall edge, a double built-in pantry, two 600mm ovens, a gas cooktop, and an Asko XL dishwasher, perfectly merging style and function. Vinyl plank flooring in the living spaces adds modern practicality.

Outside, relax or entertain in the fully tiled alfresco area measuring approximately 2.7 by 7.2 metres. It features a recessed ceiling with a ceiling fan, ducted air conditioning, gas cooktop, built-in cabinetry with sink, and an electric retractable awning - perfect for year-round enjoyment. Exposed aggregate surrounds the home, and double gate side access provides a secure 4.5m wide driveway leading to a rear garage with high clearance ideal for a caravan or motorhome.

Locally, Geographe is a lifestyle dream with stunning nearby beaches just 900m away, and the heart of Busselton, with its vibrant café culture, art galleries, and fresh markets, is only 1.4km away, along with medical centres and essential shopping. The area benefits from easy access to main roads for effortless travel.

Whether you're searching for your forever home or an investment opportunity, don't miss your chance to view this exceptional property - call Jeremy Lloyd 0414 651 458 today!

Disclaimer: Whilst every care has been taken in the preparation of this advertisement and the approximate outgoings, all information supplied by the seller and the seller's agent is provided in good faith. Prospective purchasers are encouraged to make their own enquiries to satisfy themselves on all pertinent matters. Images are for illustrative purposes.

MORE DETAILS

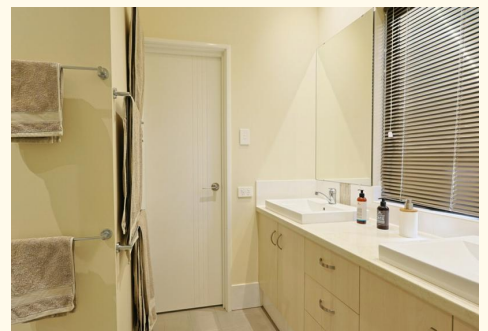
Property ID	19VXHND
Property Type	House
Land Area	531 m2
Including	Ensuite
	Air Conditioning
	Toilets (2)
	Outdoor Entertaining
	Built-in-Robes

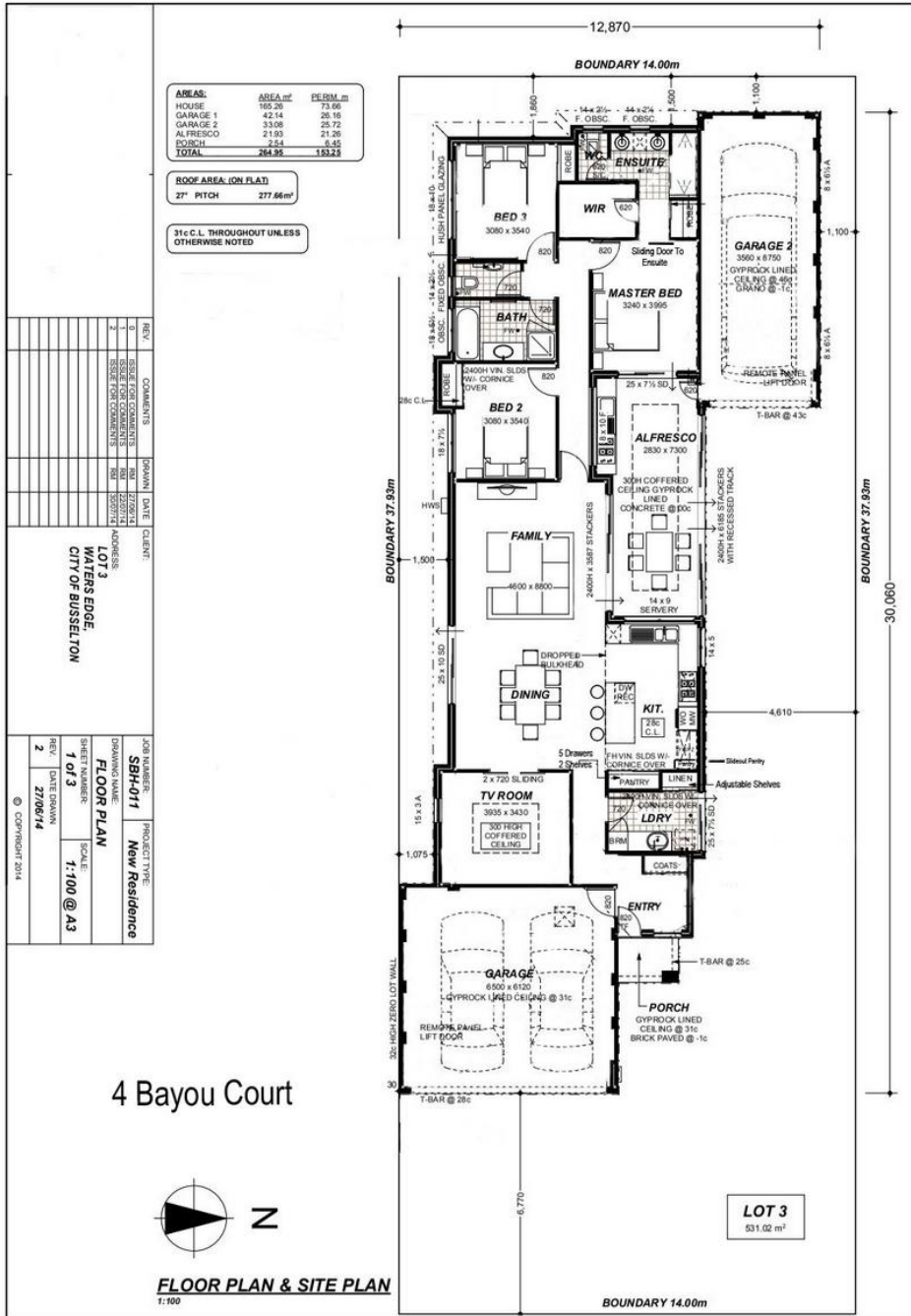
Jeremy Lloyd 0414 651 458

Sales Consultant â€” Busselton | jeremy.lloyd@ljhsouthwest.com.au

LJ Hooker Property South West WA (08) 9791 6880

130 Victoria Street, BUNBURY WA 6230
southwestwa.ljhooker.com.au | bunbury@ljhsouthwest.com.au





All information contained therein is gathered from relevant third parties sources. We cannot guarantee or give any warranty about the information provided. Interested parties must rely solely on their own enquiries.