



## Geographe, 29 Pavilion Crescent

Elegance, Space, and Modern Living

Step into a home where style, functionality, and comfort come together in perfect harmony. This impressive residence offers everything you need for modern family living, including:

- \* Luxurious Master Suite: Enjoy the ultimate in privacy with a spacious walk-in robe (WIR) and a stylish ensuite, designed for relaxation.
- \* Grand Theatre Room: Whether it's movie nights or entertaining guests, this dedicated space brings the cinema experience to your home.
- \* Sleek Modern Flooring: Vinyl plank flooring adds a touch of warmth and durability throughout, combining beauty with practicality.
- \* Expansive Open-Plan Living: High ceilings and a large, open layout create an inviting atmosphere for family gatherings and entertaining.
- \* Gourmet Kitchen & Scullery: Featuring stone benchtops, 900mm appliances, and a gas cooktop, plus an adjoining scullery and laundry for added convenience.
- \* Oversized Double Garage: Extra height provides ample space for vehicles and additional

4 2 2

**For Sale**  
Offers Above \$760,000

**View**  
[ljhooker.com.au/172AHND](http://ljhooker.com.au/172AHND)

**Contact**  
**Aidan Fraser**  
0437 195 730  
[aidan.fraser@ljhsouthwest.com.au](mailto:aidan.fraser@ljhsouthwest.com.au)



**Disclaimer:** All information contained therein is gathered from relevant third parties sources. We cannot guarantee or give any warranty about the information provided. Interested parties must rely solely on their own enquiries.

**LJ Hooker Property South West WA**  
(08) 9791 6880

storage.

\* Generous Minor Bedrooms: All bedrooms come with built-in double robes, offering plenty of storage space.

\* Outdoor Entertaining: An extra-wide patio provides the perfect setting for alfresco dining and relaxation.

\* Modern Finishes: LED downlights throughout create a bright and inviting ambiance.

Perfectly suited for families or investors, with a current lease in place until September 2025.

Don't miss your chance to experience this exquisite property-make it yours today!

Call Aidan Fraser today on 0437 195 730

Disclaimer - whilst every care has been taken in the preparation of this advertisement and the approximate outgoings, all information supplied by the seller and the seller's agent is provided in good faith. Prospective purchasers are encouraged to make their own enquiries to satisfy themselves on all pertinent matters. Images are for illustrative purposes.

## More About this Property

Property ID	172AHND
Property Type	House
House Size	190 m2
Land Area	450 m2

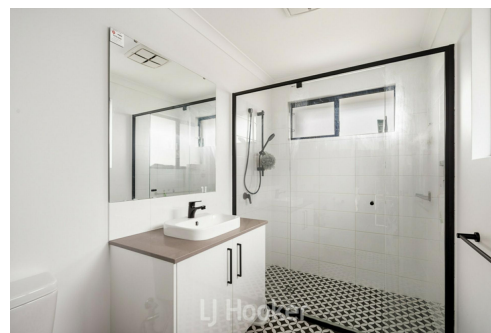
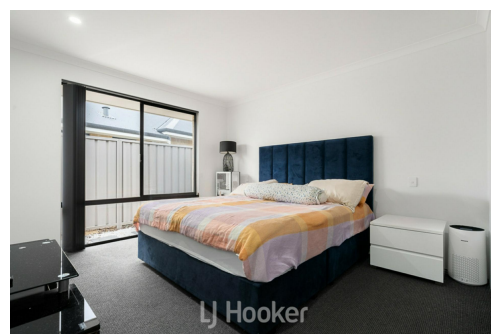
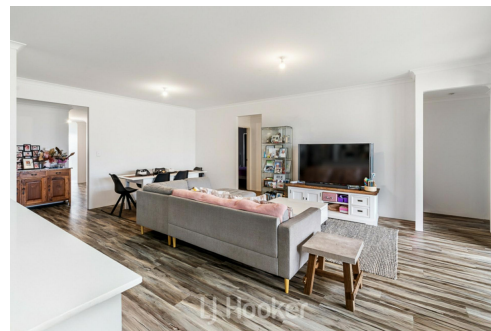
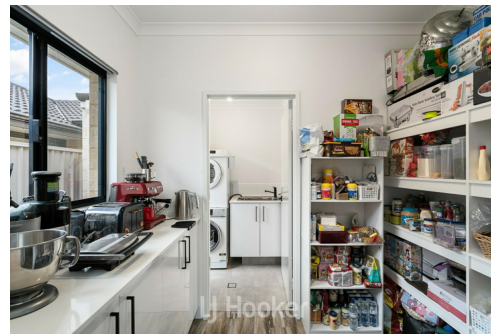
### Aidan Fraser 0437 195 730

Licensed Sales Agent - Busselton | [aidan.fraser@ljhsouthwest.com.au](mailto:aidan.fraser@ljhsouthwest.com.au)

### LJ Hooker Property South West WA (08) 9791 6880

130 Victoria Street, BUNBURY WA 6230

[southwestwa.ljhooker.com.au](http://southwestwa.ljhooker.com.au) | [bunbury@ljhsouthwest.com.au](mailto:bunbury@ljhsouthwest.com.au)



**Disclaimer:** All information contained therein is gathered from relevant third parties sources. We cannot guarantee or give any warranty about the information provided. Interested parties must rely solely on their own enquiries.

**LJ Hooker Property South West WA  
(08) 9791 6880**

## 29 Pavilion Crescent, Geogrpah WA 6280

This floor plan including furniture, fixture measurements and dimensions are approximate and for illustrative purposes only.  
LJ Hooker gives no guarantee, warranty or representation as to the accuracy and layout.  
All enquiries must be directed to the agent, vendor or party representing this floor plan.



FLOOR PLAN



LJ Hooker Property South West WA  
(08) 9791 6880

**Disclaimer:** All information contained therein is gathered from relevant third parties sources.  
We cannot guarantee or give any warranty about the information provided. Interested parties must rely solely on their own enquiries.