



222 Marine Terrace, Geographe

Coastal Charm with Modern Comforts

Experience classic coastal charm with modern comforts in this beautiful home at 222 Marine Terrace, Geographe. Perfectly suited to families, holiday makers, or investors looking for a spacious property with easy access to the natural beauty of Geographe Bay and local amenities.

728 sqm block with ocean views

Less than 200m to the beach

3 queen-sized bedrooms, 1 bathroom, 2 toilets




Timber frame construction with Colorbond roof, house on stumps

Climate comforts include split system air conditioning in all bedrooms and living area, ceiling fan, and cosy wood fireplace

Outdoor shed (5 x 3m) and carport with single car cover

Inside, the spacious living and dining area features warm jarrah flooring, a wood fireplace perfect for cooler evenings, ceiling fan for summer comfort, and a split system aircon to keep the climate just right. The kitchen offers a blend of electric oven and gas cooktop, tiled splashback, dishwasher, and enough bench space with jarrah flooring for easy maintenance.

Each of the well-proportioned bedrooms is queen-sized with jarrah

3  1  1 

FOR SALE
From \$950,000

AGENTS

Jeremy Lloyd

0414 651 458

jeremy.lloyd@ljhsouthwest.com.au

AGENCY

LJ Hooker Property South West WA
(08) 9791 6880

All information contained therein is gathered from relevant third parties sources.
We cannot guarantee or give any warranty about the information provided.
Interested parties must rely solely on their own enquiries.



floors and fitted with curtains and split system air conditioning for personalised comfort. The bathroom includes a single shower with curtain, single vanity, and an open toilet design. A separate laundry with a closed toilet adds convenience.

Outdoors, the generous yard benefits from bore reticulation and ready access via a side gate, making it easy to maintain the established gardens or accommodate boats or trailers. The 5x3m shed provides ample storage or workspace for hobbies and tools.

Situated in the desirable Geographe precinct, this home places you within 200m walk of beautiful beaches along Geographe Bay, local parks, and the vibrant boutique cafés and restaurants down at the Busselton foreshore. Shopping centres, schools, and medical facilities are also just a short drive away, offering the perfect blend of relaxation and convenience.

Whether you're looking for a coastal retreat, a family residence, or a smart investment, this property presents a fantastic opportunity in one of the South West's most popular areas.

Whether you're searching for your forever home or an investment opportunity, don't miss your chance to view this exceptional property - call Jeremy Lloyd 0414 651 458 today!

Disclaimer: Whilst every care has been taken in the preparation of this advertisement and the approximate outgoings, all information supplied by the seller and the seller's agent is provided in good faith. Prospective purchasers are encouraged to make their own enquiries to satisfy themselves on all pertinent matters. Images are for illustrative purposes.

MORE DETAILS

Property ID	192GHND
Property Type	House
Land Area	728 m2
Including	Air Conditioning
	Toilets (2)
	Deck
	Floorboards

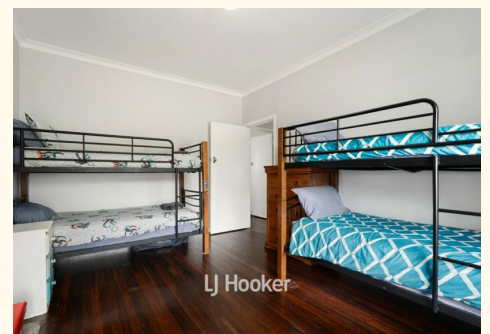
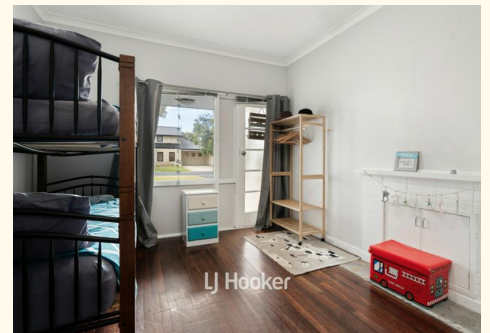
Jeremy Lloyd 0414 651 458

Sales Consultant â€“ Busselton | jeremy.lloyd@ljhsouthwest.com.au

LJ Hooker Property South West WA (08) 9791 6880

130 Victoria Street, BUNBURY WA 6230

southwestwa.ljhooker.com.au | bunbury@ljhsouthwest.com.au





JEREMY LLOYD
0414 651 458



222 Marine Tce, Geographe



TOTAL: 140 m²

THIS FLOOR PLAN HAS BEEN PREPARED BY EVENTUALLY CREATIVE. WHILE ALL MEASUREMENTS ARE CONSIDERED RELIABLE, THEY ARE NOT GUARANTEED AND SHOULD BE INDEPENDENTLY VERIFIED. THIS FLOOR PLAN IS COPYRIGHT PROTECTED AND CANNOT BE REPRODUCED, MODIFIED, OR USED WITHOUT THE PERMISSION OF EVENTUALLY CREATIVE.

