

## Gelorup, 3 Sierra Place

Spacious Luxury Living on Over an Acre —A Rare Opportunity!

Nestled on an expansive 4,137sqm lot, this fully renovated circa 387sqm residence is a statement of modern luxury, comfort, and functionality. Offering four generously sized bedrooms and three stylish bathrooms, this home is perfect for large families or those seeking extra space. The attached studio with a separate entrance provides incredible versatility, ideal for additional guests, home business, or home office setup, the options are endless.

Inside, the home has been beautifully updated with high-end finishes and thoughtful design elements. The main living area boasts polished timber floorboards, adding warmth and elegance, while ducted and split system reverse cycle air conditioning ensures year-round comfort throughout. Every corner of this home has been carefully curated to offer a perfect blend of style and practicality.



**For Sale**  
Please Call

**View**  
[ljhooker.com.au/17GVHND](http://ljhooker.com.au/17GVHND)

**Contact**  
**Rebecca Maskell**  
0437 085 992  
[rebecca.maskell@ljhsouthwest.com.au](mailto:rebecca.maskell@ljhsouthwest.com.au)  
**Simon Bushell**  
0411 929 198  
[simon.bushell@ljhsouthwest.com.au](mailto:simon.bushell@ljhsouthwest.com.au)



**LJ Hooker Property South West WA**  
**(08) 9791 6880**

**Disclaimer:** All information contained therein is gathered from relevant third parties sources. We cannot guarantee or give any warranty about the information provided. Interested parties must rely solely on their own enquiries.

At the heart of the home lies a gourmet kitchen that seamlessly blends style and functionality. Featuring expansive stone benchtops, this beautifully designed space offers plenty of room for meal preparation and entertaining. The abundance of drawers and overhead cupboard cabinetry ensures ample storage, keeping everything neatly organized. The wall-mounted oven and induction cooktop provide a sleek, modern cooking experience, while the glass splashback adds a touch of contemporary elegance and makes cleaning effortless. Whether you're a home chef or love hosting, this kitchen is designed to impress and perform.

The luxurious main bedroom is a true retreat, designed with comfort and sophistication in mind. Offering generous space and a walk-in robe, there's ample storage to keep your wardrobe neatly organized. The private ensuite bathroom is a masterpiece of modern design, featuring floor-to-ceiling tiles that create a sleek and seamless look. The walk-in shower adds to the spa-like feel, providing both style and convenience. This serene sanctuary offers the perfect place to unwind at the end of the day.

The main bathroom is a stunning blend of elegance and functionality, designed to provide a spa-like experience. Featuring floor-to-ceiling tiles, this space exudes a sleek, modern aesthetic while ensuring easy maintenance. A stylish single vanity offers ample storage and counter space, complementing the room's sophisticated design. The walk-in shower provides a seamless, open feel, while the freestanding bathtub serves as the perfect centrepiece-ideal for soaking and unwinding in absolute comfort. Thoughtfully designed with high-quality finishes, this bathroom is both a practical and luxurious retreat for the whole family.

Stepping outside, you'll find your own private resort-style oasis. The 11m x 4m heat pump heated fibreglass swimming pool is perfect for year-round enjoyment, while the thatched roof cabana and liquid limestone paved surrounds create a luxurious space for entertaining or unwinding in style. The glass panel fencing adds a sleek, modern touch while maintaining uninterrupted views of this stunning retreat. Complemented by the timber decked gable patio with café blinds, you'll feel like every day is a holiday.

For those who require ample storage or workspace, this property delivers in spades. The double carport provides protected parking, while the 14m x 7m powered workshop/machinery shed is ideal for trades, hobbies, or additional storage. Sustainability and efficiency are also at the forefront, with a solar power system featuring a 5kW inverter, a concrete rainwater tank with a new tank liner, and bore irrigation to keep the expansive grounds lush and green.

Adding to its appeal, the property features a rear vegetable garden and a thriving fruit tree orchard, allowing you to enjoy fresh, homegrown produce straight from your backyard. Whether you're looking for a peaceful retreat, a place to entertain, or a functional home with abundant space, this extraordinary property ticks all the boxes.

With everything already done for you, all that's left is to move in and embrace the ultimate in space, luxury, and lifestyle. Don't miss this rare opportunity-contact us today to arrange your private viewing!



**LJ Hooker Property South West WA**  
**(08) 9791 6880**

**Disclaimer:** All information contained therein is gathered from relevant third parties sources. We cannot guarantee or give any warranty about the information provided. Interested parties must rely solely on their own enquiries.

## More About this Property

Property ID	17GVHND
Property Type	House
House Size	387 m2
Land Area	4137 m2

### Rebecca Maskell 0437 085 992

Sales Consultant | [rebecca.maskell@ljhsouthwest.com.au](mailto:rebecca.maskell@ljhsouthwest.com.au)

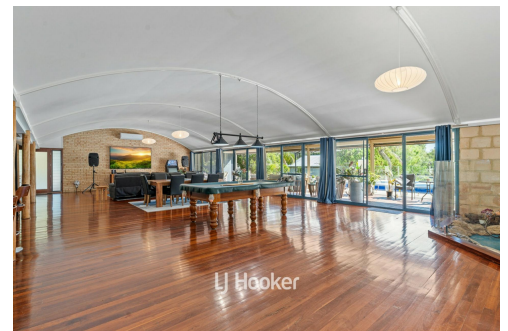
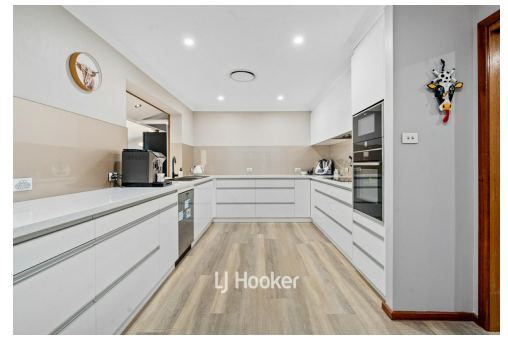
### Simon Bushell 0411 929 198

Sales Consultant | [simon.bushell@ljhsouthwest.com.au](mailto:simon.bushell@ljhsouthwest.com.au)

### LJ Hooker Property South West WA (08) 9791 6880

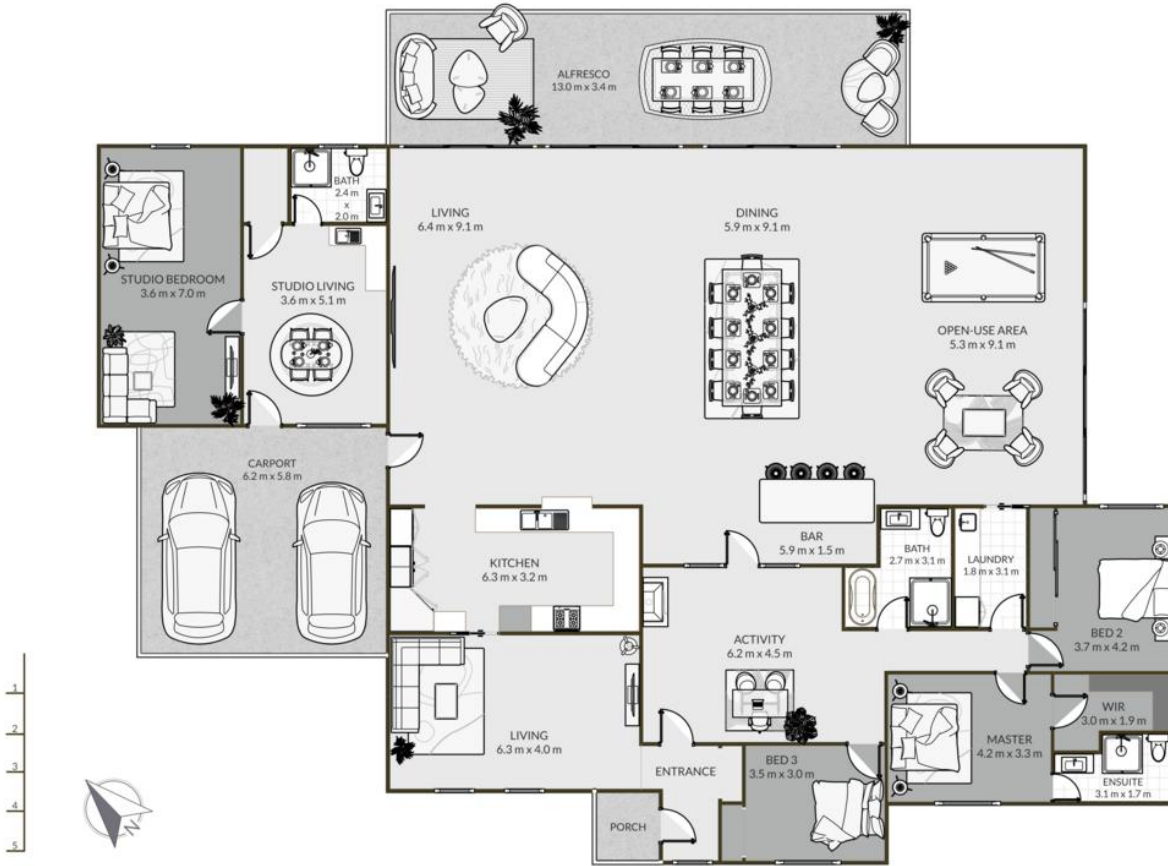
130 Victoria Street, BUNBURY WA 6230

[southwestwa.ljhooker.com.au](http://southwestwa.ljhooker.com.au) | [bunbury@ljhsouthwest.com.au](mailto:bunbury@ljhsouthwest.com.au)



**Disclaimer:** All information contained therein is gathered from relevant third parties sources. We cannot guarantee or give any warranty about the information provided. Interested parties must rely solely on their own enquiries.

**LJ Hooker Property South West WA  
(08) 9791 6880**



REBECCA MASKELL  
0437 085 992

SIMON BUSHELL  
0411 929 198



### 3 SIERRA PLACE GELORUP

4 BED 3 BATH 2 CAR

TOTAL: 460 m2

THIS FLOOR PLAN HAS BEEN PREPARED BY EVENTUALLY CREATIVE. WHILE ALL MEASUREMENTS ARE CONSIDERED RELIABLE, THEY ARE NOT GUARANTEED AND SHOULD BE INDEPENDENTLY VERIFIED. THIS FLOOR PLAN IS COPYRIGHT PROTECTED AND CANNOT BE REPRODUCED, MODIFIED, OR USED WITHOUT THE PERMISSION OF EVENTUALLY CREATIVE.



LJ Hooker Property South West WA  
(08) 9791 6880

**Disclaimer:** All information contained therein is gathered from relevant third parties sources. We cannot guarantee or give any warranty about the information provided. Interested parties must rely solely on their own enquiries.