

Geilston Bay, 13 Oscars Place

Your Perfect Family Home Awaits in Geilston Bay!

Welcome to your expertly designed sanctuary in the popular and convenient suburb of Geilston Bay. This beautifully designed 4-bedroom home offers the perfect blend of peaceful living, modern comfort, and natural beauty. Nestled beside bushland, yet conveniently located for quick access to the waterfront, shops, schools, and transport, this home provides an idyllic lifestyle with breathtaking mountain and water views.

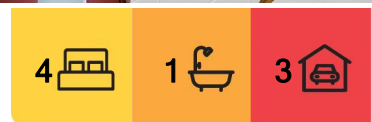
Key Features:

Spacious Family Living: The home offers four generously sized bedrooms, each filled with natural light to create a welcoming atmosphere. There's plenty of room for everyone, making it ideal for families, professionals, or those looking for space to grow.

Charming Bathroom: Relax in the elegant bathroom featuring a classic clawfoot bathtub, perfect for unwinding after a busy day or enjoying a quiet moment of peace.



Disclaimer: All information contained therein is gathered from relevant third parties sources. We cannot guarantee or give any warranty about the information provided. Interested parties must rely solely on their own enquiries.



For Sale
Offers Over \$770,000

View
By Appointment

Contact
Alison Rogers
0409 220 211
arogers@ljhookerpinnacle.com

Emily Bye
0409 029 918
ebye@ljhookerpinnacle.com

LJ Hooker Pinnacle Property
(03) 6272 8177

Open-Plan Living & Dining: The open-plan living area serves as the heart of the home, seamlessly blending the living, dining, and kitchen spaces with the outdoor entertaining space. High ceilings and large windows fill the area with natural light, while the wood heater adds a cosy touch during colder months.

Outdoor Entertaining: Step out onto the spacious deck, where you can host summer barbecues or enjoy a morning coffee while soaking in the breathtaking views. The surrounding gardens offer tranquillity and space for kids to play, with a swing set adding extra fun.

Incredible Views: Whether from the living room or your balcony, enjoy panoramic views of the nearby hills, Derwent River, and the majestic kunanyi/Mt Wellington. These stunning vistas make every moment spent at home feel like a retreat.

Low Maintenance, Solar Passive Design: This architecturally designed home features a solar passive layout that maximises energy efficiency, providing a comfortable and sustainable living environment for years to come.

Location Highlights:

Sought-After Neighbourhood: Situated in a peaceful, family-friendly neighbourhood known for its welcoming community feel, this property offers a quiet, relaxed lifestyle with a natural backdrop.

Outdoor Paradise: Just minutes from local parks, walking trails, and the waterfront, you'll have plenty of options to explore the natural beauty of the area. For mountain bikers, the world-renowned Meehan Ranges is easily accessible, while those who prefer a slower pace can enjoy nature walks or take a stroll along the foreshore at the marina.

Convenience at Your Doorstep: With easy access to schools, shopping centres, and public transport, this home strikes the perfect balance of suburban tranquillity and urban convenience.

Why You'll Love It:

Imagine waking up to breathtaking views of the Derwent River, spending afternoons exploring nearby nature trails, or hosting family and friends on the deck as you watch the sunset over the mountains. Whether you're seeking a quiet retreat or an entertainer's haven, this home offers the ideal setting for every lifestyle.

This stunning property presents an incredible opportunity for families, professional couples, or anyone looking for a versatile residence with space to entertain and enjoy nature. Don't miss out on the chance to make this home your own.

Contact: LJ Hooker Pinnacle Property for more details or to arrange your private inspection.

The information contained herein has been supplied to us and we have no reason to doubt its accuracy, however, cannot guarantee it. Accordingly, all interested parties should make



LJ Hooker Pinnacle Property
(03) 6272 8177

Disclaimer: All information contained therein is gathered from relevant third parties sources. We cannot guarantee or give any warranty about the information provided. Interested parties must rely solely on their own enquiries.

their own enquiries to verify this information.

More About this Property

Property ID	5X85FCS
Property Type	House
Land Area	1198 m ²
Including	Ensuite Air Conditioning Toilets (2) Fire Place Balcony Deck Outdoor Entertaining Workshop Built-in-Robes Solar Panels

Alison Rogers 0409 220 211

Pinnacle Partner | Property Representative | arogers@ljhookerpinnacle.com

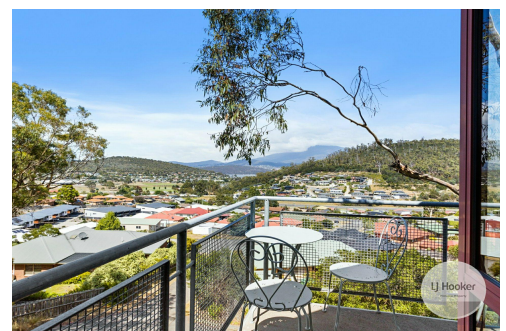
Emily Bye 0409 029 918

Sales Associate to Alison Rogers | ebye@ljhookerpinnacle.com

LJ Hooker Pinnacle Property (03) 6272 8177

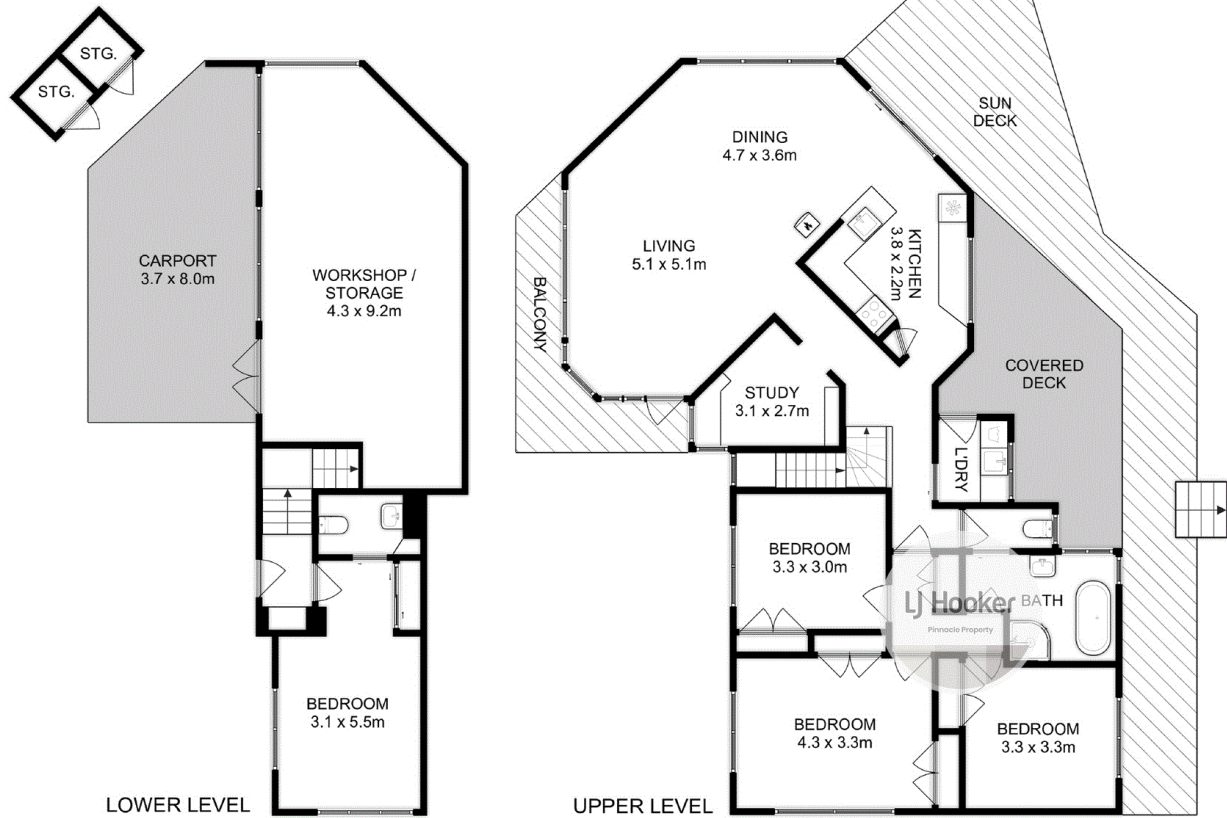
402 Main Road, GLENORCHY TAS 7010

pinnacleproperty.ljhooker.com.au | hello@ljhookerpinnacle.com



Disclaimer: All information contained therein is gathered from relevant third parties sources. We cannot guarantee or give any warranty about the information provided. Interested parties must rely solely on their own enquiries.

LJ Hooker Pinnacle Property
(03) 6272 8177



Total Approx. House Area : 147 sqm
Total Approx. Outbuilding Area : 36 sqm

All measurements are internal and approximate.
This plan is a sketch for illustration, not valuation.
Produced by Open2view.com