



Geebung, 5 Piccadilly Street

CHARMING POST-WAR HOME IN A SOUGHT-AFTER GEEBUNG POCKET —663SQM

Perfectly positioned in one of Geebung's most desirable pockets, this charming post-war home sits on a generous 663sqm block and presents an exceptional opportunity for both homeowners and investors alike. Boasting delightful street appeal, this well-presented home is ready for immediate occupancy or investment, and offers the ideal blend of character and practicality.

Inside, you'll find a practical floorplan that includes a welcoming front porch, a spacious lounge area, a separate family room, and a tidy kitchen with a meals area. The home also offers three generous bedrooms (two with air-conditioning) and a well-appointed family bathroom. Step outside to the covered deck, perfect for outdoor dining and relaxation, and overlooking the expansive backyard that provides ample space for families, pets, and gardening enthusiasts. There is also a garage with extensive sealed workshop and storage space under the home.



Disclaimer: All information contained therein is gathered from relevant third parties sources. We cannot guarantee or give any warranty about the information provided. Interested parties must rely solely on their own enquiries.



For Sale
For Sale Now

View
ljhooker.com.au/39WDF1R

Contact
Daniel Waters
0412 847 849
dwaters@ljhooker.com.au

Jacob Ball
0417 649 903
jbball@ljhooker.com.au

LJ Hooker Aspley | Chermide
(07) 3263 6022

Set back from the street, the property enjoys a large front and rear yard, enhancing its appeal for those seeking outdoor space. Located just 11km from Brisbane's CBD and a short 5-minute drive from Westfield Chermshire, this location offers an unrivalled combination of convenience and charm. Excellent schools, reliable public transport options, 2 major hospitals and easy access to shopping, dining, and entertainment make this the perfect home for growing families.

This is a rare chance to secure a blue-chip property in a highly sought-after Geebung location. Don't miss out-schedule your viewing today!

Key Features:

- * Charming post-war home on a spacious 663sqm block
- * Set back behind a white picket fence with superb street appeal
- * Timber chamferboard construction with a tile roof, rich hardwood floors, high ceilings, timber casement windows, and ornate plaster corning
- * Sunny front porch perfect for enjoying your morning coffee
- * Spacious lounge with plenty of windows
- * Separate family room offering an additional living space
- * Neat and tidy kitchen with meals area, electric cooktop, oven, dishwasher, and a bright, north/east-facing aspect
- * Covered deck overlooking the backyard, ideal for outdoor dining and relaxation
- * Three generous bedrooms (two with air-conditioning)
- * Well-appointed family bathroom with shower over bath and separate toilet
- * Extensive storage and workshop space, plus a lock-up garage downstairs
- * Expansive front and backyards, ideal for families, pets, and avid gardeners
- * Strong rental potential for investors

Don't miss this incredible opportunity to invest in a prime location in Geebung. Contact Daniel Waters or Jacob Ball to arrange an inspection today!

More About this Property

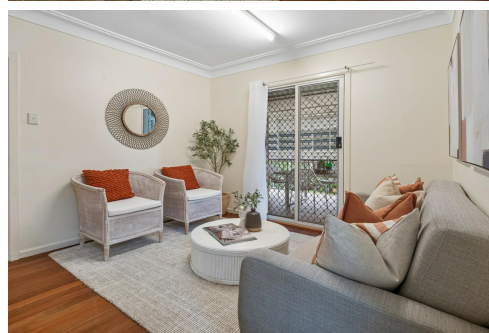
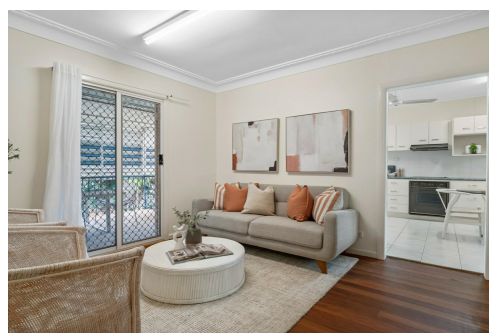
Property ID	39WDF1R
Property Type	House
Land Area	663 m2
Including	Air Conditioning Toilets (1) Deck Dishwasher Workshop Built-in-Robes Liveability

Daniel Waters 0412 847 849
 Business Owner, Sales Consultant and Registered Valuer |
 dwaters@ljhooker.com.au
Jacob Ball 0417 649 903
 Co-Agent “ Daniel Waters Team | jball@ljhooker.com.au

LJ Hooker Aspley | Chermshire (07) 3263 6022
 1359 Gympie Road, ASPLEY QLD 4034
 aspley.ljhooker.com.au | aspley@ljhooker.com.au



Disclaimer: All information contained therein is gathered from relevant third parties sources. We cannot guarantee or give any warranty about the information provided. Interested parties must rely solely on their own enquiries.



LJ Hooker Aspley | Chermshire (07) 3263 6022



Floor 1



Floor 2

Whilst every attempt has been made to ensure accuracy, Floor Plans are representative and should be used as a guide only

LJ Hooker