

Gawler East, 4 Henwood Court

*** The open scheduled for Saturday 25th May between 3 - 3:30pm has been cancelled, we apologise for any inconvenience **

Why build when you can move in straight away!

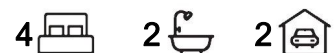
Situated in the delightful Springwood Estate in Gawler East near to parks, playground and walking trails is this quality 2016 built 4 bedroom family home. A wonderful floor plan designed to bring family together around the open plan family and meals area while extending outdoors to an alfresco entertaining space overlooking the back lawn rear yard where children can play. The kitchen has a 'Hampton's' feel thanks to the designer tiled splashback, there's an abundance of bench space for the cook of the home.

Features include:

- * 6.5 star energy rating home | Built by Frank Nesci Homes —Custom Home Builder
- * 248m2 (approx.) of home under roof



Disclaimer: All information contained therein is gathered from relevant third parties sources. We cannot guarantee or give any warranty about the information provided. Interested parties must rely solely on their own enquiries.



For Sale
UNDER CONTRACT

View
ljhooker.com.au/2A8AGJU

Contact
Shaun Roberts
0435 367 534
shaunr@ljhsales.com.au

LJ Hooker Greenwith | Golden Grove
| Mawson Lakes | Modbury
(08) 8289 6660

- * 4 bedrooms, master with walk in robe and ensuite with his and hers wash basins
- * Bedroom 2, 3 and 4 all with built-in robes
- * Open plan family and meals with electric fireplace heater
- * Large family kitchen with electric cooktop, oven and dishwasher, and corner walk in pantry
- * Front formal lounge
- * Ducted reverse cycle air conditioning
- * Tiled alfresco entertaining overlooks lawn backyard
- * Double auto garage with internal access
- * Workshop/store room perfect for the home handyman behind garage
- * 10kw solar panel system saving you \$\$ on your electricity bills

Just moments to Gawler Main Street, shops and restaurants along with local schools this is a wonderful location to raise a family. Just a hop, skip and a jump and you can also be in the Barossa Valley enjoying a glass of wine, it doesn't get much better than this!

All information provided has been obtained from sources we believe to be accurate, however, we cannot guarantee the information is accurate and we accept no liability for any errors or omissions (including but not limited to a property's land size, floor plans and size, building age and condition). Interested parties should make their own enquiries and obtain their own legal and financial advice. Should this property be scheduled for auction, the Vendor's Statement may be inspected at either of our two LJ Hooker Property Specialists Real Estate offices for 3 consecutive business days immediately preceding the auction and at the auction for 30 minutes before it starts.

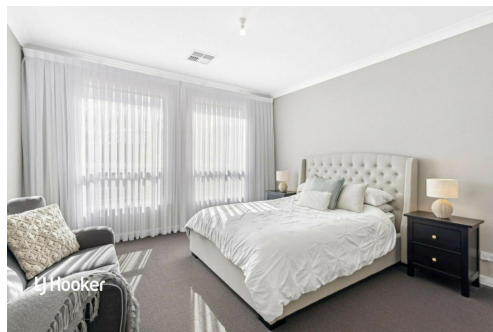
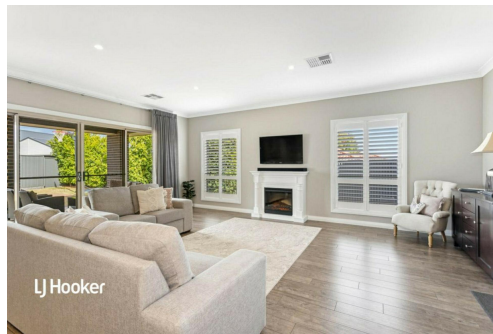
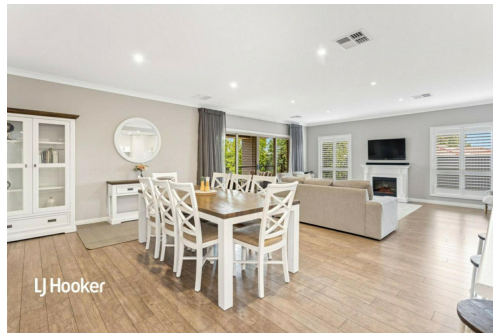
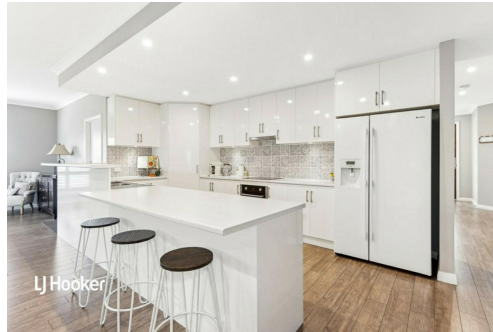
RLA 208516

More About this Property

| | |
|---------------|---|
| Property ID | 2A8AGJU |
| Property Type | House |
| House Size | 248 m² |
| Land Area | 542 m² |
| Including | Air Conditioning Ducted Cooling Ducted Heating Dishwasher Secure Parking Fully Fenced Remote Garage Solar Panels |

Shaun Roberts 0435 367 534
Managing Partner | Sales Specialist | shaunr@ljhsales.com.au

LJ Hooker Greenwith | Golden Grove | Mawson Lakes | Modbury (08) 8289 6660
North East, Shop 2, 1007 North East Road, RIDGEHAVEN SA 5097
greenwithgoldengrove.ljhooker.com.au | info@ljhsupport.com.au



Disclaimer: All information contained therein is gathered from relevant third parties sources. We cannot guarantee or give any warranty about the information provided. Interested parties must rely solely on their own enquiries.

**LJ Hooker Greenwith | Golden Grove
| Mawson Lakes | Modbury
(08) 8289 6660**



Scale in metres. This drawing is for illustration purposes only. All measurements are approximate and details intended to be relied upon should be independently verified.

Produced by The Fotobase Group