

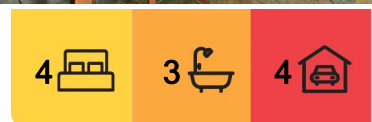
Garfield, 260 Fourteen Mile Road

Prime Equestrian Property on Approx. 20 Acres

Nestled in a serene and picturesque setting, this exceptional 20-acre horse property is perfectly positioned for equestrian enthusiasts. Conveniently located just 10 minutes from the Pakenham Racecourse and training facility at Tynong and approximately 20 minutes to Pakenham township, this property offers easy access for trainers and owners while providing top-tier facilities for their horses. With its proximity to Melbourne, it's an outstanding opportunity for those seeking a premium equestrian lifestyle.

The Residence:

- * Well appointed kitchen with electric oven, gas cooktop and dishwasher
- * Meals area and separate family room
- * Comfortable lounge room featuring a split system and a cozy Coonara fireplace
- * Three generous bedrooms, including a master with ensuite
- * Separate study, perfect for a home office or additional storage



For Sale
\$1,700,000

View
By Appointment

Contact
Troy Farrell
0417 244 524
tfarrell.pakenham@ljhooker.com.au



Disclaimer: All information contained therein is gathered from relevant third parties sources. We cannot guarantee or give any warranty about the information provided. Interested parties must rely solely on their own enquiries.

LJ Hooker Pakenham
(03) 5943 8000

Equestrian Facilities:

- * Horse stable complex with 10 well-sized boxes
- * Large hay shed and dedicated feed room
- * 14 well maintained paddocks, 8 featuring shelters
- * Two expansive 7-acre spelling paddocks

Granny Flat:

- * Fully self-contained, featuring a bedroom, bathroom, living area, and kitchen – ideal for extended family, guests, or rental income

Additional Features:

- * Mains water supply for reliability and convenience
- * Fully equipped workshop/toolshed
- * Double carport and additional sundry shedding
- * Evaporative cooling

This outstanding property offers a rare opportunity to secure a well-equipped equestrian property in a prime location. Whether you're a professional trainer, breeder, or seeking a peaceful country lifestyle, this property has everything you need.

For more information or to arrange a private inspection, contact us today!

Please note: All property details listed were current at the time of publishing. Due to extreme buyer demand, some properties may have been sold in the preceding 24 hours. Therefore confirmation of all opens with the listing agent within 24 hours of their scheduled opening is advised.

More About this Property

Property ID	1PRWFC9
Property Type	House
Land Area	20 acre
Including	Ensuite Study Air Conditioning Evaporative Cooling Toilets (3) Dishwasher Outdoor Entertaining Built-in-Robes Secure Parking

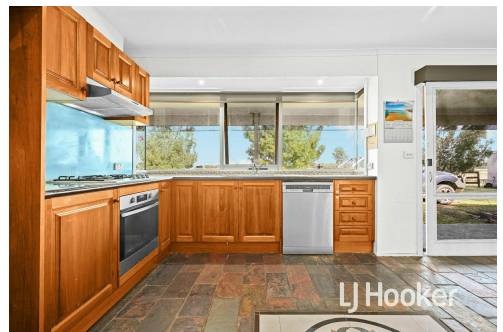
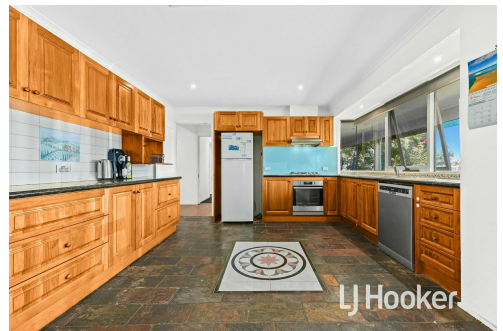
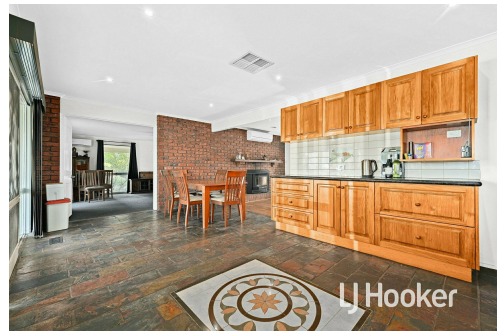
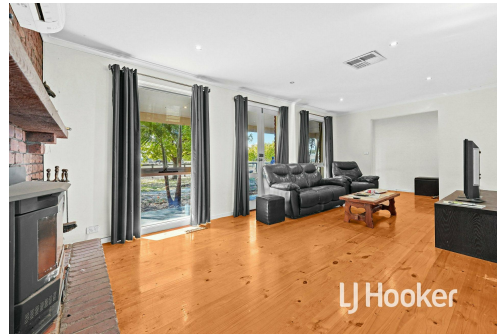
Troy Farrell 0417 244 524

Sales Specialist | Licensed Estate Agent | tfarrell.pakenham@ljhooker.com.au

LJ Hooker Pakenham (03) 5943 8000

45 John Street, PAKENHAM VIC 3810

pakenham@ljhooker.com.au | pakenham@ljhooker.com.au



Disclaimer: All information contained therein is gathered from relevant third parties sources. We cannot guarantee or give any warranty about the information provided. Interested parties must rely solely on their own enquiries.

LJ Hooker Pakenham
(03) 5943 8000



This drawing is for illustrative purposes only and while every effort has been made to maintain accuracy, prospective purchasers should check all information