






39 Crowder Street, Garbutt

SPACIOUS, SOLID AND PERFECTLY POSITIONED

Offering space, comfort and practicality, this solid lowset brick home delivers an easy-care lifestyle in a highly convenient location. With generous proportions throughout and multiple living zones, this property is ideal for families, retirees or buyers seeking room to move both inside and out.

- Three very large bedrooms
- Two spacious living areas offering flexibility for the whole family
- Fully tiled throughout for low maintenance living
- Large Main bathroom plus second toilet
- Fully airconditioned for year-round comfort
- Fantastic oversized outdoor entertainment area perfect for entertaining guests
- Excellent access to the rear of the property
- Double carport with automatic roller door
- Solar hot water system
- Solar panels to help reduce energy costs
- Wired for generator
- Solid lowset brick construction
- Conveniently located close to the city, public transport, schools and everyday amenities

3  1  2 

FOR SALE
Overs over \$599,000

VIEW
By Appointment

AGENTS
Suzanne Coverlid
0439 032 210
suzanne.coverlid@ljhooker.com.au

AGENCY
LJ Hooker Townsville
07 44262125

All information contained therein is gathered from relevant third parties sources.
We cannot guarantee or give any warranty about the information provided.
Interested parties must rely solely on their own enquiries.

 **LJ Hooker**

Positioned in a sought-after location with everything at your fingertips, this home combines comfort, convenience and functionality in one impressive package. Whether you are looking to move straight in or invest in a quality property, this is an opportunity not to be missed.

MORE DETAILS

Property ID 4A8HWK
Property Type House

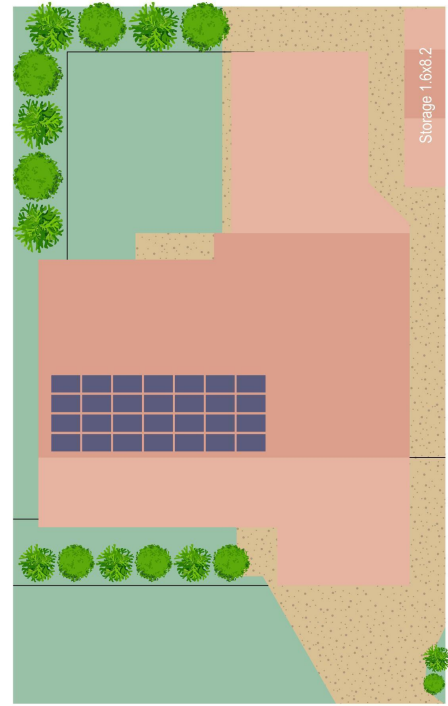
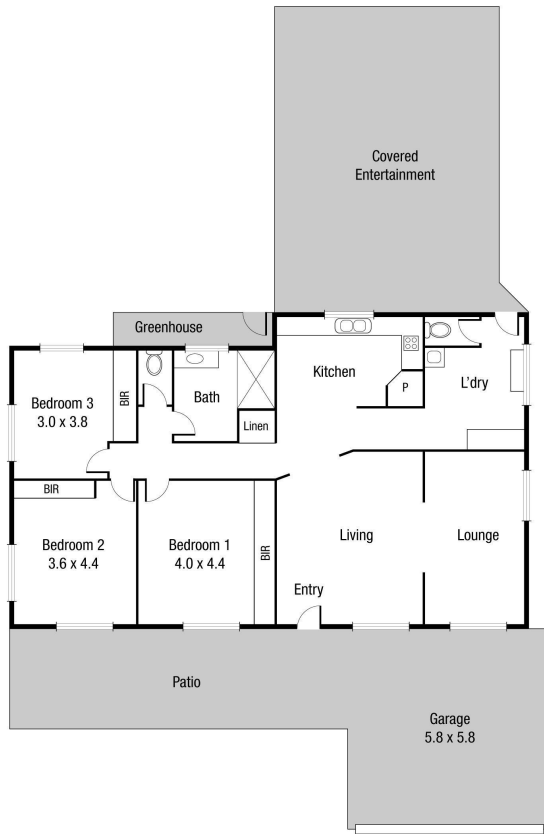
Suzanne Coverlid 0439 032 210

Sales & Marketing Consultant | suzanne.coverlid@ljhooker.com.au

LJ Hooker Townsville 07 44262125

Shop 18/39 Eyre Street, NORTH WARD QLD 4810
townsville.ljhooker.com.au | townsville@ljhooker.com.au





Scale in metres. Indicative only. Dimensions are approximate. All information contained herein is gathered from sources we believe to be reliable. However we cannot guarantee its accuracy and interested persons should rely on their own enquiries.

TOTAL AREA : 260.4 sq.m

39 Crowder St, Garbutt