

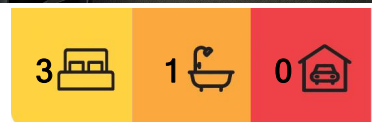


Gagebrook, 21 Briar Crescent

21 Briar Crescent, Gagebrook

Built in 1982, this property boasts a spacious 594 m2 block and is meticulously maintained, making it a great investment opportunity. The updated kitchen adds modern charm to the 3-bedroom layout, constructed with sturdy masonry brick. Currently, the property is tenanted with excellent tenants, ensuring immediate rental income for prospective buyers.

The information contained herein has been supplied to us and we have no reason to doubt its accuracy, however, cannot guarantee it. Accordingly, all interested parties should make their own enquiries to verify this information.



For Sale
Offers Over \$410,000

View
By Appointment

Contact
Phil Ayers
0407 868 345
payers@ljhookerpinnacle.com

Ben Ayers
0417 518 608
bayers@ljhookerpinnacle.com



Disclaimer: All information contained therein is gathered from relevant third parties sources. We cannot guarantee or give any warranty about the information provided. Interested parties must rely solely on their own enquiries.

LJ Hooker Pinnacle Property
(03) 6272 8177

More About this Property

| | |
|----------------------|-----------------------------|
| Property ID | 4NNMFCS |
| Property Type | House |
| House Size | 104 m ² |
| Land Area | 594 m ² |
| Including | Toilets (1) Fully Fenced |

Phil Ayers 0407 868 345

Property Representative | payers@ljhookerpinnacle.com

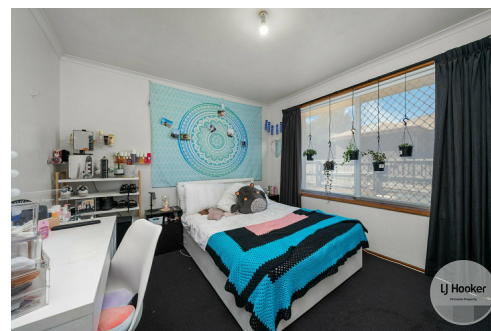
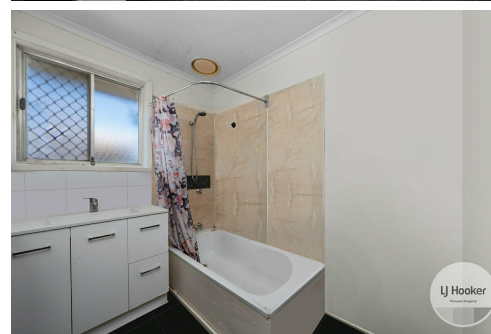
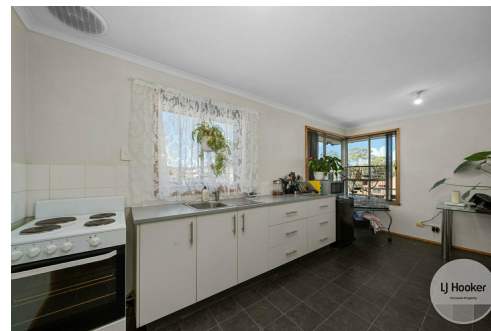
Ben Ayers 0417 518 608

Property Representative | bayers@ljhookerpinnacle.com

LJ Hooker Pinnacle Property (03) 6272 8177

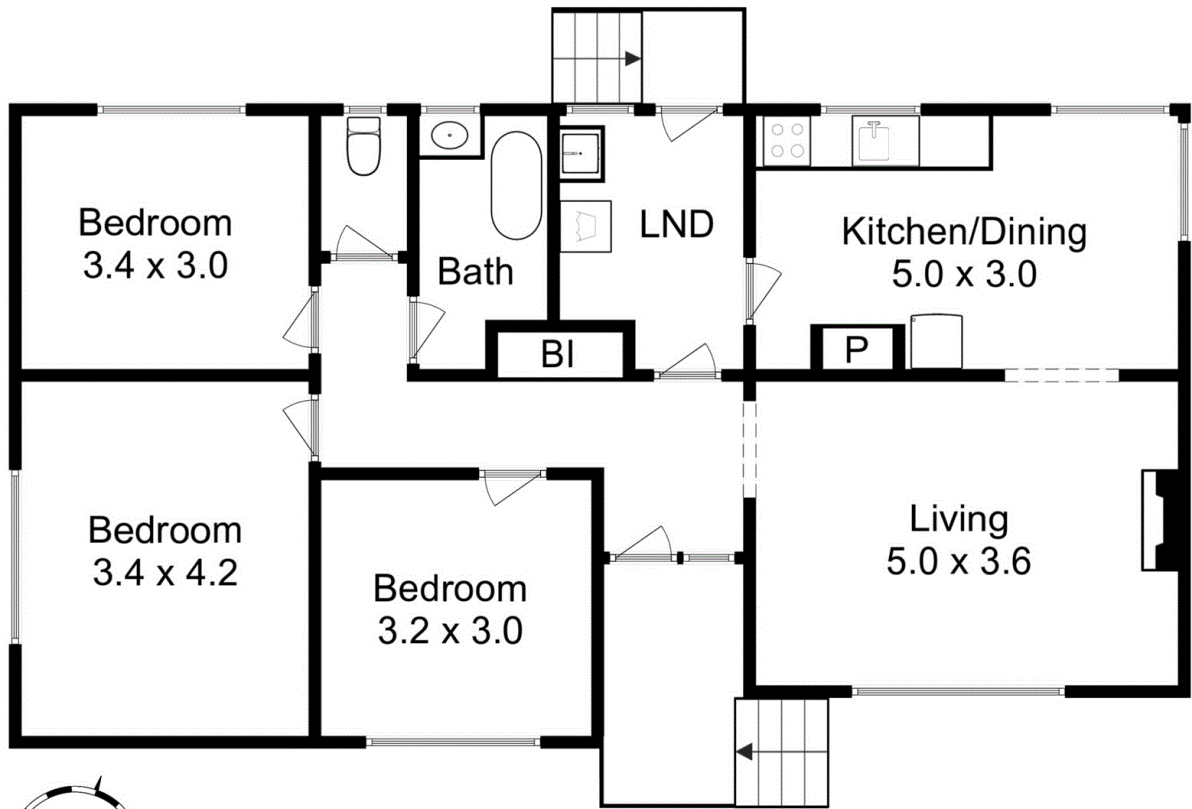
402 Main Road, GLENORCHY TAS 7010

pinnacleproperty.ljhooker.com.au | hello@ljhookerpinnacle.com



Disclaimer: All information contained therein is gathered from relevant third parties sources. We cannot guarantee or give any warranty about the information provided. Interested parties must rely solely on their own enquiries.

LJ Hooker Pinnacle Property
(03) 6272 8177



This floor plan is for marketing purposes only and is to be used as a guide.

