



Furnissdale, 116 Ronlyn Road

Lifestyle.. Potential off Grid... Easy Access to Mandurah....
You Can Have It All !!!

This 3x1 gem on 2 massive hectares in Furnissdale!

G'day mates! Ya gotta check out this real gem in Furnissdale, WA!

This ripper acreage offers a fair dinkum Aussie lifestyle with a beaut 3x1 house on a 2-hectare property. The master bedroom's a cracker with a split system air con and built-in robe, while the other two bedrooms are a ripper size and also have split system air cons! The family bathroom's a ripper too, fully tiled with a bath! The kitchen's fair dinkum, with a gas oven, cooktop, and a dishwasher to boot!
Plus, there's a massive family/games room with a wood-fired heater to keep cozy in winter!

This ace property is set up real good with scheme water, solar-powered bore, rainwater tank, mains power, solar panels, and even a diesel generator.

The bloomin' gardens are a treasure, with fruit trees galore - Avocado, Orange, Mandarin,



For Sale
Seeking Offers Over \$739,000

View
ljhooker.com.au/4PT0FF2

Contact
Ian Watson
0428 887 599
iwatson.mandurah@ljhooker.com.au

LJ Hooker Mandurah
(08) 9586 5555

Disclaimer: All information contained therein is gathered from relevant third parties sources. We cannot guarantee or give any warranty about the information provided. Interested parties must rely solely on their own enquiries.

Lemon, Lime, and Apples, and there's even a chook pen for fresh eggs!
And ya can go off-grid, grow ya own veggies, and live the Aussie dream! It's a top spot for fishin' and just a stone's throw from the Spudshed, mate! Don't miss the chance for a fair dinkum fresh start and a ripper lifestyle down under!

This ripper Acreage is fair dinkum perfect for families and upsizers! Plenty of space for the ankle biters to run amok and grow up, and for the adults to stretch out without knocking elbows. The area's got serene surroundings, and a real sense of community, mate.

The Area

- Approx. 1 km to the serene and beautiful Serpentine River
- Approx. 7 km to the quirky restaurants and charming cafes in Mandurah
- Approx. 800mt to Spudshed
- Approx. 4.5 km to Mandurah Forum
- Approx. 4 km to Peel Health Campus
- Approx 6km to Freeway entry on Pinjarra Road

Mate, I'm telling ya, this place is fair dinkum unreal! With all this space, ya can live the true blue Aussie dream. What are ya waitin' for? This massive acreage is a ripper of a spot to call home, so chuck on yer thongs and come check it out before it's gone!

Give Ian Watson a buzz on 0428 887 599

LJ Hooker Mandurah to suss out this ripper property!

DISCLAIMER: This description has been prepared for advertising and marketing purposes only. It is believed to be reliable and accurate; however, buyers must make their own independent inquiries and must rely on their own personal judgment about the information included in this advertisement. Ian Watson and LJ Hooker Mandurah provides this information without any express or implied warranty as to its accuracy or currency.

More About this Property

Property ID	4PT0FF2
Property Type	AcreageSemi-rural
Land Area	2 hectare

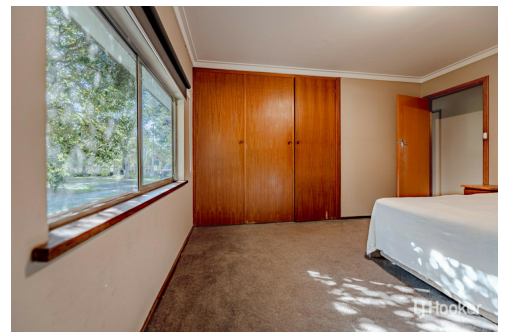
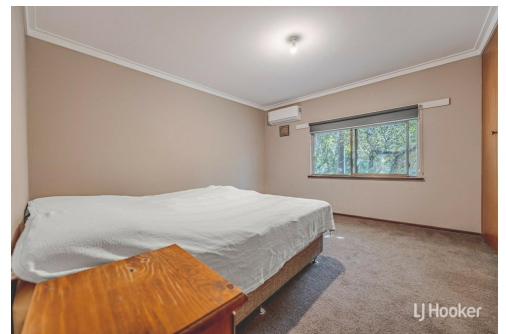
Ian Watson 0428 887 599

Property Consultant | iwatson.mandurah@ljhooker.com.au

LJ Hooker Mandurah (08) 9586 5555

68 Mandurah Terrace, MANDURAH WA 6210

mandurah.ljhooker.com.au | reception2.mandurah@ljhooker.com.au



LJ Hooker Mandurah
(08) 9586 5555

Disclaimer: All information contained therein is gathered from relevant third parties sources. We cannot guarantee or give any warranty about the information provided. Interested parties must rely solely on their own enquiries.