

18-24 Loxley Chase, Forestdale

ROOM TO BREATHE, SPACE TO GROW

Situated in the sought-after suburb of Forestdale, this home offers a peaceful, semi-rural village atmosphere, all while being close to necessary amenities, shops, schools, and transport.

Positioned on a sprawling 5,002m² corner allotment, this well configured two-storey residence, built in 2008, delivers the scale, quality and features today's buyers expect combined with the privacy and lifestyle only acreage living can offer.

From the moment you arrive, the home makes an unforgettable first impression. A grand 5.4m high entrance void creates an immediate sense of luxury, enhanced by a striking cut-out feature wall, perfectly designed to showcase statement artwork and set the tone for what lies beyond.

The home offers a beautifully designed formal living and dining area, complete with soaring 3.7-metre ceilings, accentuated by floor to ceiling glass windows that flood the space with natural light, creating an elegant and warm setting for entertaining or relaxing.

A large home office or optional fifth bedroom features a built-in robe

5 🚗 3 🚗 6 🚗

FOR SALE

Offers over \$2,200,000

VIEW

Thu 25th Jun @ 4:15PM - 5:00PM

AGENTS

Mark Foelz
0432 521 724
markfoelz@ljhpp.com.au

AGENCY

LJ Hooker Property Partners
07 3344 0288

All information contained therein is gathered from relevant third parties sources.
We cannot guarantee or give any warranty about the information provided.
Interested parties must rely solely on their own enquiries.

 **LJ Hooker**

and double door entry, providing flexibility for growing families or those working from home.

At the heart of the home is an expansive open plan zone, designed large enough to accommodate a generous kitchen, casual dining area, family room and lounge. Enhanced by 2.7-metre ceiling height, this space further amplifies the home's sense of openness and flow.

The kitchen is perfectly positioned to connect both the formal and casual living areas and is finished with stone benchtops, ample cupboard storage, a gas cooktop and central island bench, ideal for everyday living and entertaining alike.

Downstairs also includes a spacious laundry along with a full bathroom complete with shower, perfect for guests or multi-generational living.

Upstairs, the master suite is very generous in size and privately positioned in the corner of the home, featuring multiple windows that add to its natural light and overall appeal. It is complemented by a walk-in robe and a well-appointed ensuite with double vanity.

The remaining three bedrooms are serviced by a central family bathroom, complete with both shower and bath.

Set across an expansive 5,002m², the yard offers a blank canvas, providing ample space to incorporate a shed, pool or craft a bespoke outdoor lifestyle to suit your vision.

Other Notables:

- Ducted air conditioning throughout
- Ducted vacuum system
- Dimmers installed to all living areas
- Ample storage to match the size of the home
- Solar hot water
- Electric driveway gate for privacy and convenience

Located in a highly desirable pocket of Forestdale, this home offers a rare combination of modern design, land size and lifestyle appeal.

All information contained herein is gathered from sources we consider to be reliable. However, we cannot guarantee or give any warranty about the information provided and interested parties must solely rely on their own enquiries.

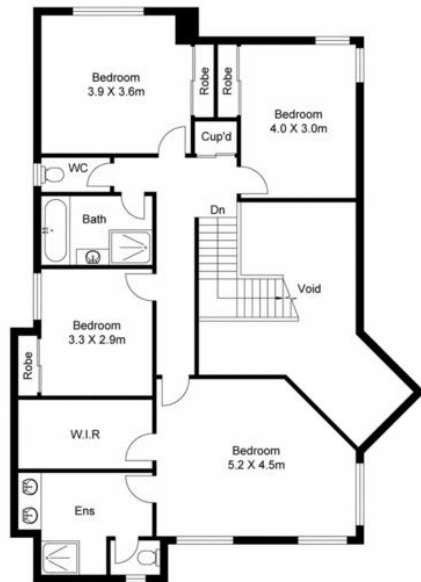
MORE DETAILS

Property ID	B4WRF4R
Property Type	House
Including	Toilets (3)

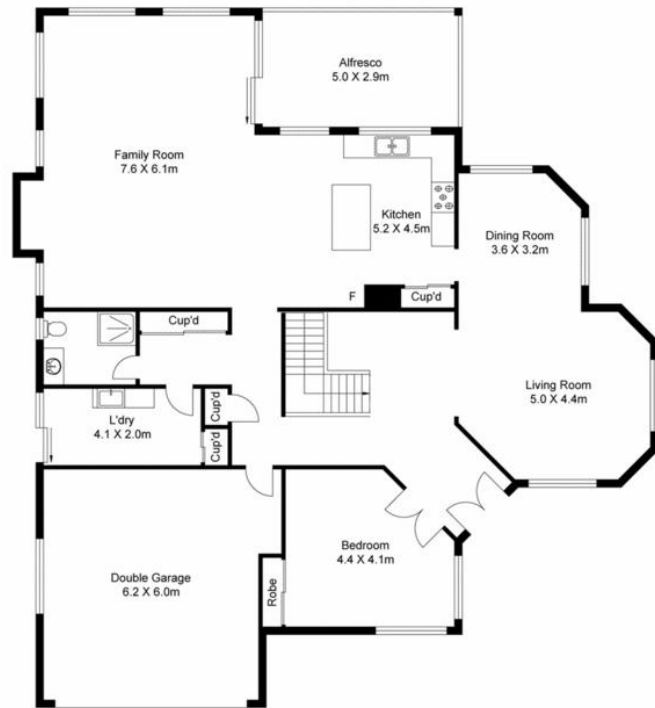
Mark Foelz 0432 521 724
Sales Person | markfoelz@ljhpp.com.au

LJ Hooker Property Partners 07 3344 0288
25 Pinelands Road, SUNNYBANK HILLS QLD 4109
propertypartners.ljhooker.com.au | sunnybankhills@ljhpp.com.au





First Floor



Ground Floor

18-24 Loxley Chase, Forestdale QLD 4118

Dimensions are approximate & therefore should only be used for illustrative purposes.

Approx. Gross Internal Floor Area 356.0 SQM