



Forest Lake, 4 Glorious Way

SOLD BY THE JANE ELVIN TEAM

Perfectly positioned in a quiet cul-de-sac, 4 Glorious Way offers an attractive opportunity for both owner occupiers and investors alike to purchase into the Forest Lake pocket.

As you enter the home you are greeted by the second living space, overlooking the front yard. Down the hall there are 4 bedrooms on offer, all with built-in wardrobes. The main bedroom is air-conditioned and enjoys direct access to the two-way bathroom, complete with a separate shower and bath. The separate toilet is positioned to the side.

With entertaining in mind, the living areas are open plan, air-conditioned and positioned at the back of the home with direct access to the covered patio and fully fenced backyard. The functional kitchen is at the heart of the home, providing plenty of cupboard space, bench space for food preparation, and electric cooktop, and oven.

There is undercover parking for 1 car at the front of the home.



Disclaimer: All information contained therein is gathered from relevant third parties sources. We cannot guarantee or give any warranty about the information provided. Interested parties must rely solely on their own enquiries.



For Sale
INVITING OFFERS

View
ljhooker.com.au/1ENZH31

Contact
Josephine Elvin
0457 000 897
joey.elvin@ljhookerproperty.com.au
Jane Elvin
0408 344 417
j.elvin@ljhookerproperty.com.au

LJ Hooker Annerley | Yeronga |
Salisbury
(07) 3848 7369

The property is within walking distance to local schools and within the Serviceton South State Primary School and Forest Lake State High School catchments. Other amenities including the Forest Lake Shopping Centre, Forest Lake Junior Rugby Union Club, Forest Lake Dog Park and bus stops are within easy reach.

Outstanding features of 4 Glorious Way at a glance:

- Tenanted until February 2026 at \$620 per week
- 2nd living space at the front of the home
- 4 bedroom with built-in wardrobes
- Main bedroom with air-conditioning & direct access to the bathroom
- Main bathroom with separate shower & bath
- Separate toilet
- Open plan & air-conditioned living areas
- Covered patio & fully fenced backyard
- Functional kitchen with plenty of cupboard space, bench space for food preparation, and electric cooktop & oven
- Undercover parking for 1 car
- Walking distance to local schools and within the Serviceton South State Primary School & Forest Lake State High School catchments
- Close to Forest Lake Shopping Centre, Forest Lake Junior Rugby Union Club, Forest Lake Dog Park & bus stops

Call Joey Elvin or Jane Elvin to discuss this opportunity further.

More About this Property

Property ID	1ENZH31
Property Type	House
Land Area	320 m2
Including	Air Conditioning Built-in-Robes Fully Fenced

Josephine Elvin 0457 000 897

Property Manager & New Business Manager | Sales Associate to Jane Elvin | joey.elvin@ljhookerproperty.com.au

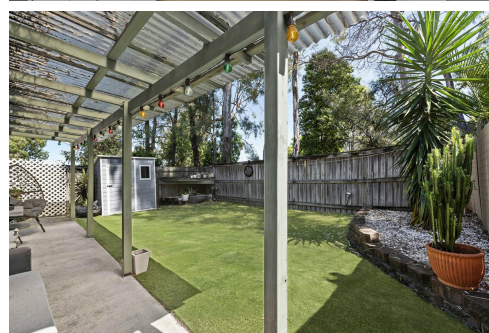
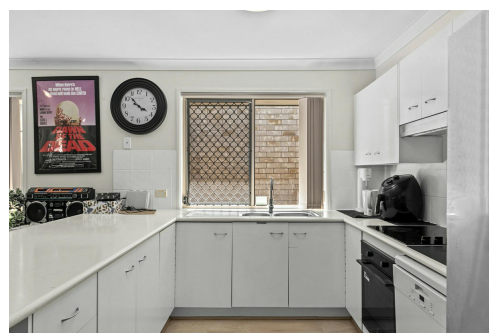
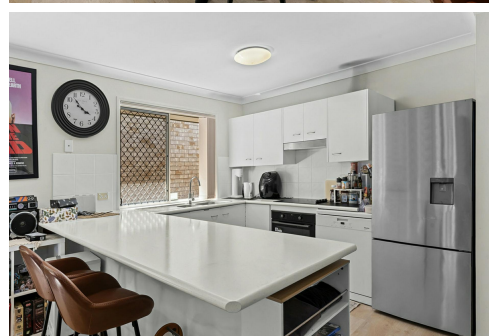
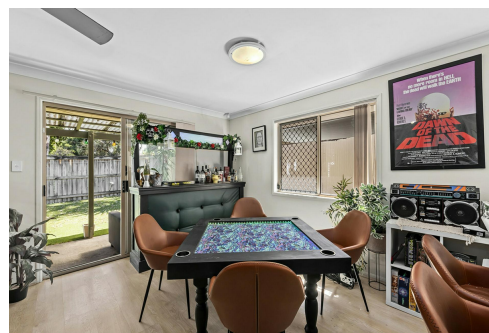
Jane Elvin 0408 344 417

Principal - Sales & Marketing Consultant | j.elvin@ljhookerproperty.com.au

LJ Hooker Annerley | Yeronga | Salisbury (07) 3848 7369

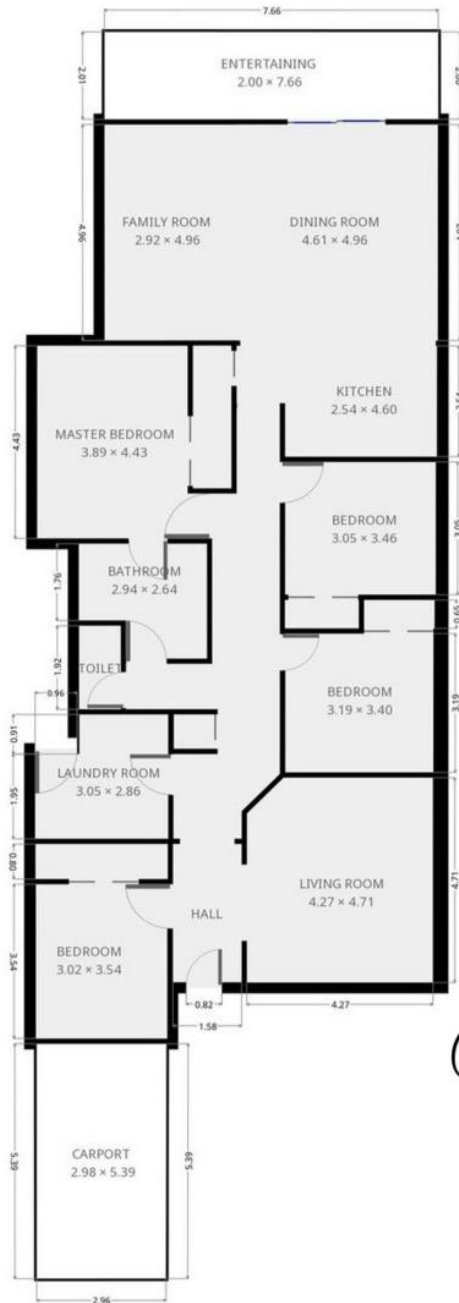
443 Ipswich Road, ANNERLEY QLD 4103

annerleyyeronga.ljhooker.com.au | admin@ljhookerproperty.com.au



Disclaimer: All information contained therein is gathered from relevant third parties sources. We cannot guarantee or give any warranty about the information provided. Interested parties must rely solely on their own enquiries.

**LJ Hooker Annerley | Yeronga |
Salisbury
(07) 3848 7369**



*Jane Elvin
Property*



Internal: 144m²
External: 176m²